



[Go to Product page](#)

Datasheet for ABIN7249868
anti-Cytokeratin 7 antibody

4 Images

Overview

Quantity:	200 µL
Target:	Cytokeratin 7 (KRT7)
Reactivity:	Human, Rat, Mouse
Host:	Mouse
Clonality:	Monoclonal
Conjugate:	This Cytokeratin 7 antibody is un-conjugated
Application:	Immunohistochemistry (IHC), Western Blotting (WB)

Product Details

Immunogen:	Recombinant protein corresponding to Mouse Cytokeratin 7
Clone:	7D8G8
Isotype:	IgG
Characteristics:	Monoclonal Antibody
Purification:	Affinity purification

Target Details

Target:	Cytokeratin 7 (KRT7)
Alternative Name:	CK-7 (KRT7 Products)
Background:	Keratins are a large family of proteins that form the intermediate filament cytoskeleton of epithelial cells, which are classified into two major sequence types. Type I keratins are a group

Target Details

of acidic intermediate filament proteins,including K9-K23,and the hair keratins Ha1-Ha8. Type II keratins are the basic or neutral counterparts to the acidic type I keratins,including K1-K8,and the hair keratins,Hb1-Hb6. KRT7,also named as cytokeratin 7,is one member of type II basic cytokeratin. It is specifically expressed in the simple epithelia lining the cavities of the internal organs and in the gland ducts and blood vessels,and their neoplasms. KRT7 is marker of epithelial tissues,but not present in carcinomas of stratified squamous cell origin.This antibody is specifically against KRT7.

Molecular Weight:	Observed_MW: 51 kDa Calculated_MW: 51 kDa
-------------------	--

UniProt:	P08729 , Q9DCV7 , Q6IG12
----------	--

Application Details

Application Notes:	WB 1:500-1:2000, IHC 1:100-1:500
--------------------	----------------------------------

Restrictions:	For Research Use only
---------------	-----------------------

Handling

Format:	Liquid
---------	--------

Concentration:	2.8 mg/mL
----------------	-----------

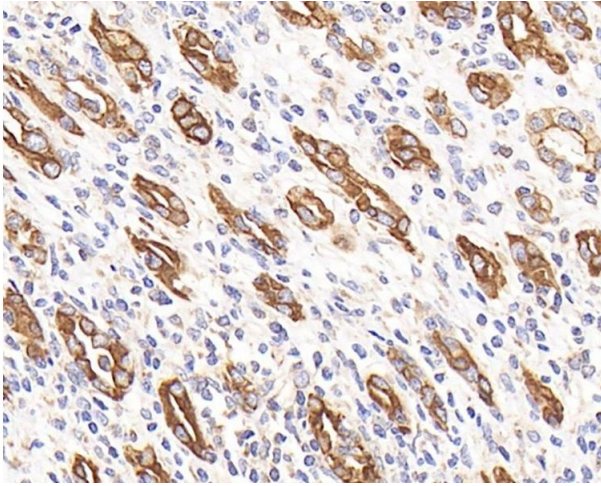
Buffer:	PBS with 0.02 % sodium azide, 1 % BSA and 50 % glycerol, pH 7.4
---------	---

Preservative:	Sodium azide
---------------	--------------

Precaution of Use:	This product contains Sodium azide: a POISONOUS AND HAZARDOUS SUBSTANCE which should be handled by trained staff only.
--------------------	--

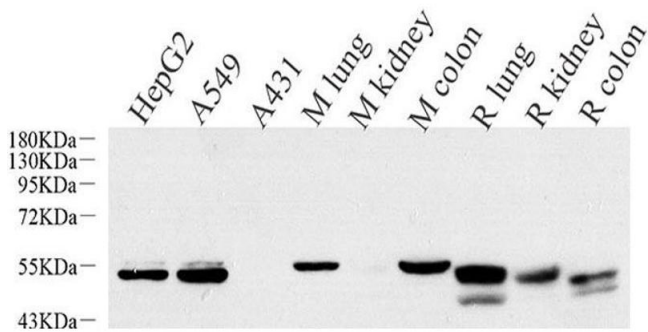
Storage:	-20 °C
----------	--------

Storage Comment:	Store at -20°C. Avoid freeze / thaw cycles.
------------------	---



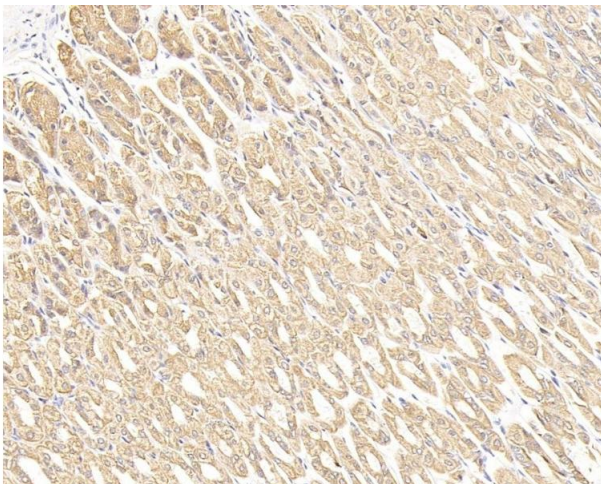
Immunohistochemistry (Paraffin-embedded Sections)

Image 1. Immunohistochemistry analysis of paraffin-embedded human stomach cancer using CK-7 Monoclonal Antibody at dilution of 1:300.



Western Blotting

Image 2. Western Blot analysis of various samples using CK-7 Monoclonal Antibody at dilution of 1:1000.



Immunohistochemistry (Paraffin-embedded Sections)

Image 3. Immunohistochemistry analysis of paraffin-embedded mouse stomach cancer using CK-7 Monoclonal Antibody at dilution of 1:300.

Please check the [product details page](#) for more images. Overall 4 images are available for ABIN7249868.