

Datasheet for ABIN7249940

**anti-Survivin antibody****3** Images[Go to Product page](#)

## Overview

Quantity:	200 µL
Target:	Survivin (BIRC5)
Reactivity:	Human, Mouse, Rat
Host:	Rabbit
Clonality:	Polyclonal
Conjugate:	This Survivin antibody is un-conjugated
Application:	Western Blotting (WB), Immunohistochemistry (IHC)

## Product Details

Immunogen:	Recombinant protein corresponding to Mouse Survivin
Isotype:	IgG
Characteristics:	Polyclonal Antibody
Purification:	Affinity purification

## Target Details

Target:	Survivin (BIRC5)
Alternative Name:	Survivin ( <a href="#">BIRC5 Products</a> )
Background:	This gene is a member of the inhibitor of apoptosis (IAP) gene family, which encode negative regulatory proteins that prevent apoptotic cell death. IAP family members usually contain multiple baculovirus IAP repeat (BIR) domains, but this gene encodes proteins with only a single BIR domain. The encoded proteins also lack a C-terminus RING finger domain. Gene expression

### Target Details

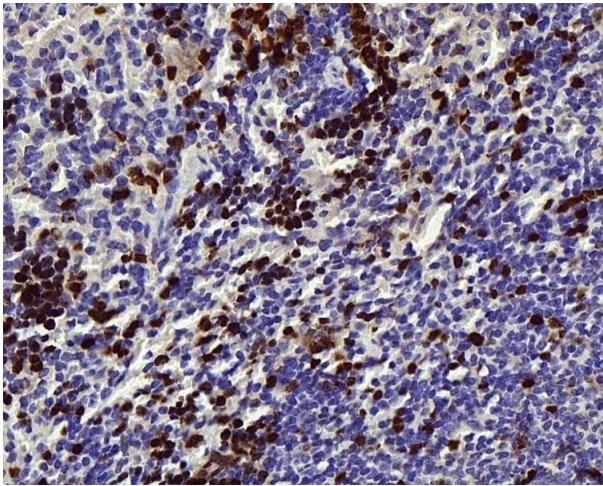
	is high during fetal development and in most tumors, yet low in adult tissues. Alternatively spliced transcript variants encoding distinct isoforms have been found for this gene.
Molecular Weight:	Observed_MW: 16-18 kDa Calculated_MW: 16 kDa
UniProt:	<a href="#">O15392</a> , <a href="#">O70201</a> , <a href="#">Q9JHY7</a>
Pathways:	<a href="#">Apoptosis</a> , <a href="#">Cell Division Cycle</a> , <a href="#">Nuclear Hormone Receptor Binding</a>

### Application Details

Application Notes:	WB 1:500-1:2000, IHC 1:200-1:600
Restrictions:	For Research Use only

### Handling

Format:	Liquid
Concentration:	450 µg/mL
Buffer:	PBS with 0.02 % sodium azide, 1 % BSA and 50 % glycerol, pH 7.4
Preservative:	Sodium azide
Precaution of Use:	This product contains Sodium azide: a POISONOUS AND HAZARDOUS SUBSTANCE which should be handled by trained staff only.
Storage:	-20 °C
Storage Comment:	Store at -20°C. Avoid freeze / thaw cycles.

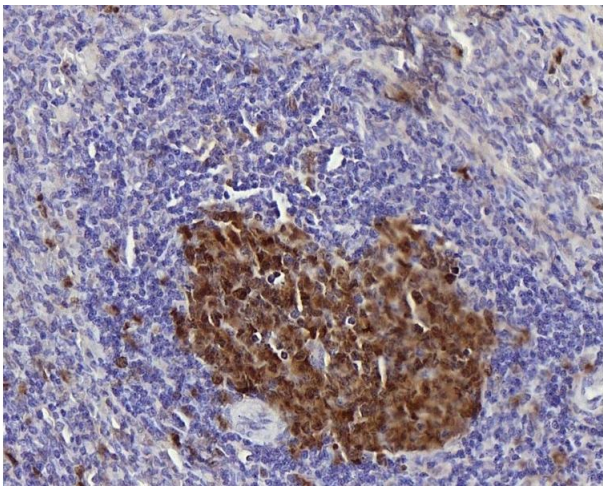
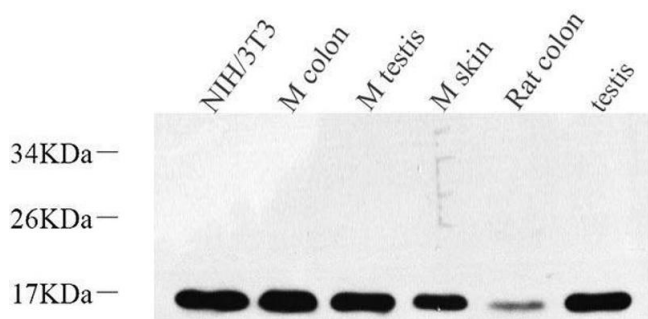


**Immunohistochemistry (Paraffin-embedded Sections)**

**Image 1.** Immunohistochemistry analysis of paraffin-embedded mouse spleen using Survivin Polyclonal Antibody at dilution of 1:300.

**Western Blotting**

**Image 2.** Western Blot analysis of various samples using Survivin Polyclonal Antibody at dilution of 1:600.



**Immunohistochemistry (Paraffin-embedded Sections)**

**Image 3.** Immunohistochemistry analysis of paraffin-embedded rat spleen using Survivin Polyclonal Antibody at dilution of 1:300.