



[Go to Product page](#)

Datasheet for ABIN7249976

anti-CCR7 antibody

2 Images

Overview

Quantity:	200 µL
Target:	CCR7
Reactivity:	Human, Mouse, Rat
Host:	Rabbit
Clonality:	Polyclonal
Conjugate:	This CCR7 antibody is un-conjugated
Application:	Western Blotting (WB)

Product Details

Immunogen:	KLH conjugated Synthetic peptide corresponding to Mouse CCR7
Isotype:	IgG
Characteristics:	Polyclonal Antibody
Purification:	Affinity purification

Target Details

Target:	CCR7
Alternative Name:	CCR7 (CCR7 Products)
Background:	The protein encoded by this gene is a member of the G protein-coupled receptor family. This receptor was identified as a gene induced by the Epstein-Barr virus (EBV), and is thought to be a mediator of EBV effects on B lymphocytes. This receptor is expressed in various lymphoid tissues and activates B and T lymphocytes. It has been shown to control the migration of

Target Details

memory T cells to inflamed tissues, as well as stimulate dendritic cell maturation. The chemokine (C-C motif) ligand 19 (CCL19/ECL) has been reported to be a specific ligand of this receptor.

Molecular Weight: Observed_MW: 48 kDa
Calculated_MW: 43 kDa

UniProt: [P32248](#), [P47774](#)

Pathways: [Regulation of Actin Filament Polymerization](#), [Positive Regulation of Immune Effector Process](#)

Application Details

Application Notes: WB 1:500-1:2000

Restrictions: For Research Use only

Handling

Format: Liquid

Concentration: 0.9 mg/mL

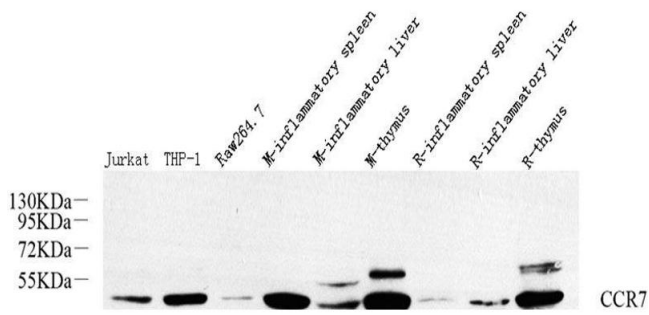
Buffer: PBS with 0.02 % sodium azide, 1 % BSA and 50 % glycerol, pH 7.4

Preservative: Sodium azide

Precaution of Use: This product contains Sodium azide: a POISONOUS AND HAZARDOUS SUBSTANCE which should be handled by trained staff only.

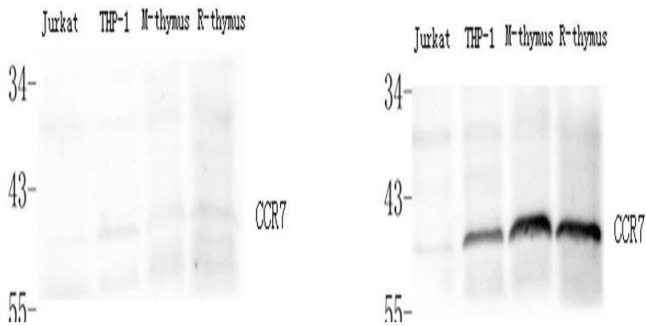
Storage: -20 °C

Storage Comment: Store at -20°C. Avoid freeze / thaw cycles.



Western Blotting

Image 1. Western Blot analysis of various samples using CCR7 Polyclonal Antibody at dilution of 1:800.



Western Blotting

Image 2. Western Blot analysis of various samples using control peptide antigen (left) and CCR7 Polyclonal Antibody at dilution of 1:800(right).