

Datasheet for ABIN7249978

**anti-CCR5 antibody**

3 Images

[Go to Product page](#)

## Overview

Quantity:	200 µL
Target:	CCR5
Reactivity:	Mouse, Rat
Host:	Rabbit
Clonality:	Polyclonal
Conjugate:	This CCR5 antibody is un-conjugated
Application:	Immunohistochemistry (IHC)

## Product Details

Immunogen:	KLH conjugated Synthetic peptide corresponding to Mouse CCR5
Isotype:	IgG
Characteristics:	Polyclonal Antibody
Purification:	Affinity purification

## Target Details

Target:	CCR5
Alternative Name:	CCR5 ( <a href="#">CCR5 Products</a> )
Background:	This gene encodes a member of the beta chemokine receptor family, which is predicted to be a seven transmembrane protein similar to G protein-coupled receptors. This protein is expressed by T cells and macrophages, and is known to be an important co-receptor for macrophage-tropic virus, including HIV, to enter host cells. Defective alleles of this gene have been

## Target Details

associated with the HIV infection resistance. The ligands of this receptor include monocyte chemoattractant protein 2 (MCP-2), macrophage inflammatory protein 1 alpha (MIP-1 alpha), macrophage inflammatory protein 1 beta (MIP-1 beta) and regulated on activation normal T expressed and secreted protein (RANTES). Expression of this gene was also detected in a promyeloblastic cell line, suggesting that this protein may play a role in granulocyte lineage proliferation and differentiation.

UniProt: [P51682](#), [O08556](#)

Pathways: [Cellular Response to Molecule of Bacterial Origin](#), [cAMP Metabolic Process](#), [Regulation of Cell Size](#)

## Application Details

Application Notes: IHC 1:200-1:800

Restrictions: For Research Use only

## Handling

Format: Liquid

Concentration: 0.55 mg/mL

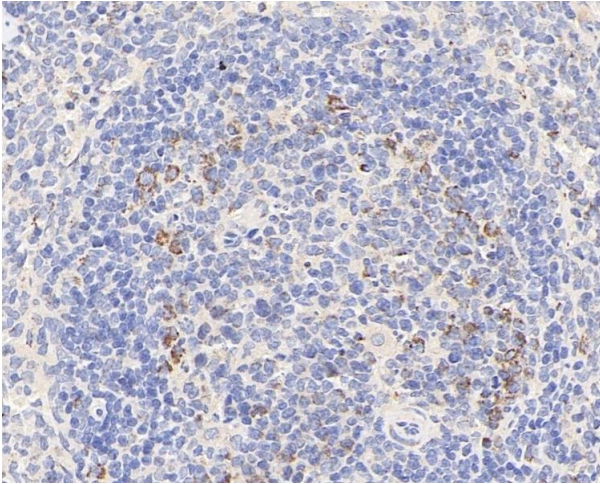
Buffer: PBS with 0.02 % sodium azide, 1 % BSA and 50 % glycerol, pH 7.4

Preservative: Sodium azide

Precaution of Use: This product contains Sodium azide: a POISONOUS AND HAZARDOUS SUBSTANCE which should be handled by trained staff only.

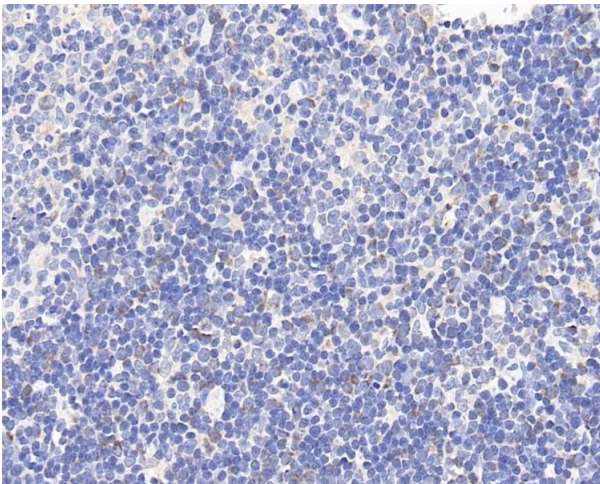
Storage: -20 °C

Storage Comment: Store at -20°C. Avoid freeze / thaw cycles.



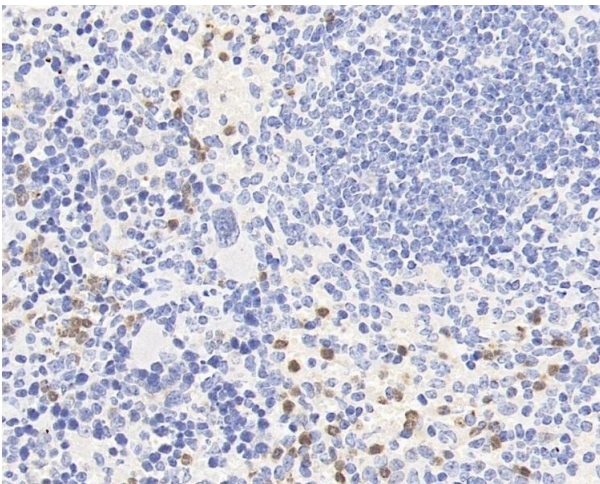
#### Immunohistochemistry (Paraffin-embedded Sections)

**Image 1.** Immunohistochemistry analysis of paraffin-embedded rat spleen using CCR5 Polyclonal Antibody at dilution of 1:300.



#### Immunohistochemistry (Paraffin-embedded Sections)

**Image 2.** Immunohistochemistry analysis of paraffin-embedded rat thymus using CCR5 Polyclonal Antibody at dilution of 1:300.



#### Immunohistochemistry (Paraffin-embedded Sections)

**Image 3.** Immunohistochemistry analysis of paraffin-embedded mouse spleen using CCR5 Polyclonal Antibody at dilution of 1:300.