



Datasheet for ABIN7249980

## anti-Ly6C antibody



[Go to Product page](#)

### 1 Image

#### Overview

Quantity:	200 µL
Target:	Ly6C (Ly-6C)
Reactivity:	Mouse
Host:	Rabbit
Clonality:	Polyclonal
Conjugate:	This Ly6C antibody is un-conjugated
Application:	Western Blotting (WB)

#### Product Details

Immunogen:	KLH conjugated Synthetic peptide corresponding to Mouse ly6c1
Isotype:	IgG
Characteristics:	Polyclonal Antibody
Purification:	Affinity purification

#### Target Details

Target:	Ly6C (Ly-6C)
Alternative Name:	Ly6c ( <a href="#">Ly-6C Products</a> )
Background:	Ly6C is a monocyte/macrophage and endothelial cell differentiation antigen regulated by interferon gamma, and may play a role in the development and maturation of lymphocytes. It is a member of the Ly6 multigene family of type V glycoposphatidylinositol anchored cell surface proteins. It is expressed on bone marrow cells, monocytes/macrophages, neutrophils,

## Target Details

---

endothelial cells, and T cell subsets. Mice with the Ly6.2 allotype (e.g., AKR, C57BL, C57BR, C57L, DBA/2, PL, SJL, SWR, 129) have subsets of CD4+Ly6C+ and CD8+Ly6C+ cells, while Ly6.1 strains (e.g., A, BALB/c, CBA, C3H/He, DBA/1, NZB) have only CD8+Ly6C+ lymphocytes.

Molecular Weight: Observed\_MW: 14 kDa  
Calculated\_MW: 14 kDa

UniProt: [P0CW02](#), [P0CW03](#)

## Application Details

---

Application Notes: WB 1:500-1:2000

Restrictions: For Research Use only

## Handling

---

Format: Liquid

Concentration: 0.55 mg/mL

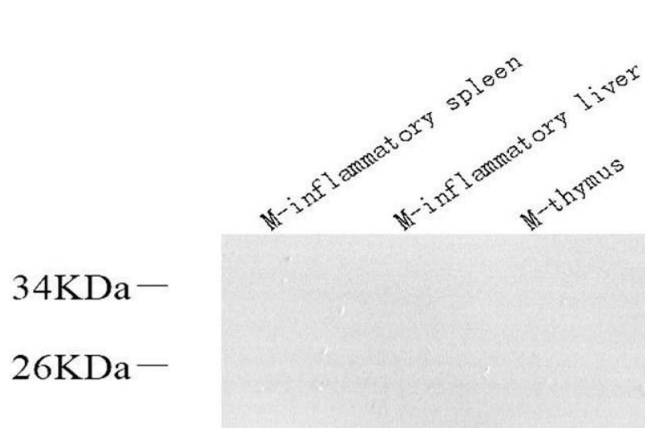
Buffer: PBS with 0.02 % sodium azide, 1 % BSA and 50 % glycerol, pH 7.4

Preservative: Sodium azide

Precaution of Use: This product contains Sodium azide: a POISONOUS AND HAZARDOUS SUBSTANCE which should be handled by trained staff only.

Storage: -20 °C

Storage Comment: Store at -20°C. Avoid freeze / thaw cycles.



### Western Blotting

**Image 1.** Western Blot analysis of various samples using Ly6c Polyclonal Antibody at dilution of 1:600.