

Datasheet for ABIN7250008  
**anti-ALPL antibody**



[Go to Product page](#)

2 Images

Overview

Quantity:	200 µL
Target:	ALPL
Reactivity:	Human, Mouse, Rat
Host:	Rabbit
Clonality:	Polyclonal
Conjugate:	This ALPL antibody is un-conjugated
Application:	Western Blotting (WB)

Product Details

Immunogen:	Recombinant protein corresponding to Mouse Alkaline Phosphatase
Isotype:	IgG
Characteristics:	Polyclonal Antibody
Purification:	Affinity purification

Target Details

Target:	ALPL
Alternative Name:	ALPL ( <a href="#">ALPL Products</a> )
Background:	There are at least four distinct but related alkaline phosphatases: intestinal, placental, placental-like, and liver/bone/kidney (tissue non-specific). The first three are located together on chromosome 2, while the tissue non-specific form is located on chromosome 1. The product of this gene is a membrane bound glycosylated enzyme that is not expressed in any particular

## Target Details

---

tissue and is, therefore, referred to as the tissue-nonspecific form of the enzyme. The exact physiological function of the alkaline phosphatases is not known. A proposed function of this form of the enzyme is matrix mineralization, however, mice that lack a functional form of this enzyme show normal skeletal development. This enzyme has been linked directly to hypophosphatasia, a disorder that is characterized by hypercalcemia and includes skeletal defects. The character of this disorder can vary, however, depending on the specific mutation since this determines age of onset and severity of symptoms. Alternatively spliced transcript variants have been described.

---

Molecular Weight:	Observed_MW: 55 kDa Calculated_MW: 57 kDa
-------------------	--

---

UniProt:	<a href="#">P05186</a> , <a href="#">P09242</a> , <a href="#">P08289</a>
----------	--

## Application Details

---

---

Application Notes:	WB 1:500-1:2000
--------------------	-----------------

---

Restrictions:	For Research Use only
---------------	-----------------------

## Handling

---

---

Format:	Liquid
---------	--------

---

Concentration:	200 µg/mL
----------------	-----------

---

Buffer:	PBS with 0.02 % sodium azide, 1 % BSA and 50 % glycerol, pH 7.4
---------	---

---

Preservative:	Sodium azide
---------------	--------------

---

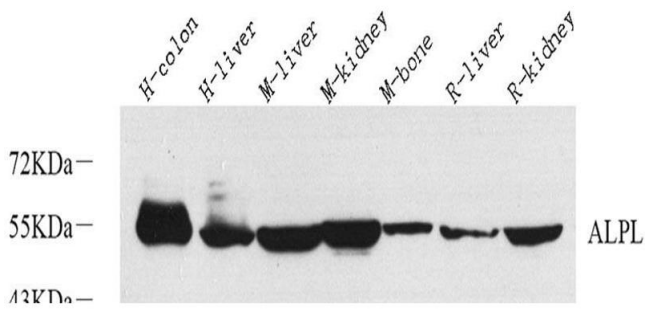
Precaution of Use:	This product contains Sodium azide: a POISONOUS AND HAZARDOUS SUBSTANCE which should be handled by trained staff only.
--------------------	--

---

Storage:	-20 °C
----------	--------

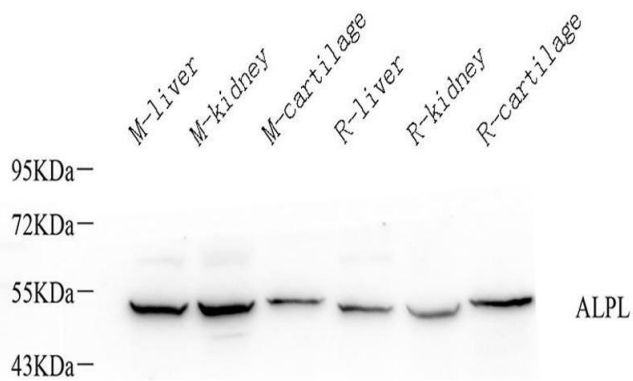
---

Storage Comment:	Store at -20°C. Avoid freeze / thaw cycles.
------------------	---



### Western Blotting

**Image 1.** Western Blot analysis of various samples using ALPL Polyclonal Antibody at dilution of 1:1000.



### Western Blotting

**Image 2.** Western Blot analysis of various samples using ALPL Polyclonal Antibody at dilution of 1:1000.