

Datasheet for ABIN7250035
anti-Galectin 3 antibody



[Go to Product page](#)

3 Images

Overview

Quantity:	200 µL
Target:	Galectin 3 (LGALS3)
Reactivity:	Human
Host:	Mouse
Clonality:	Monoclonal
Conjugate:	This Galectin 3 antibody is un-conjugated
Application:	Western Blotting (WB), Immunohistochemistry (Paraffin-embedded Sections) (IHC (p)), Immunofluorescence (IF)

Product Details

Immunogen:	Synthetic Peptide
Clone:	1A2
Isotype:	IgG
Characteristics:	Monoclonal Antibody
Purification:	Protein A purification

Target Details

Target:	Galectin 3 (LGALS3)
Alternative Name:	Galectin 3 (LGALS3 Products)
Target Type:	Chemical

Target Details

Background: Galactose-specific lectin which binds IgE. May mediate with the alpha-3, beta-1 integrin the stimulation by CSPG4 of endothelial cells migration. Together with DMBT1, required for terminal differentiation of columnar epithelial cells during early embryogenesis.

Molecular Weight: Observed_MW: 26 kDa
Calculated_MW: 26 kDa

UniProt: [P17931](#)

Pathways: [RTK Signaling](#)

Application Details

Application Notes: WB 1:1000-1:3000, IHC 1:100-1:300, IF 1:100-200

Restrictions: For Research Use only

Handling

Format: Liquid

Concentration: 1 mg/mL

Buffer: PBS with 0.02 % sodium azide and 50 % glycerol pH 7.4.

Preservative: Sodium azide

Precaution of Use: This product contains Sodium azide: a POISONOUS AND HAZARDOUS SUBSTANCE which should be handled by trained staff only.

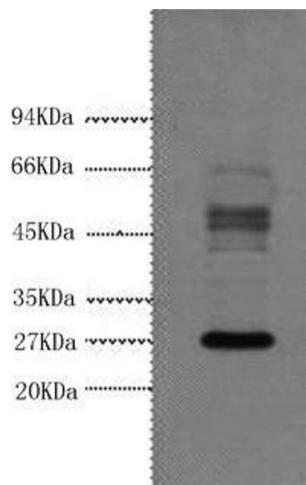
Storage: -20 °C

Storage Comment: Store at -20°C. Avoid freeze / thaw cycles.



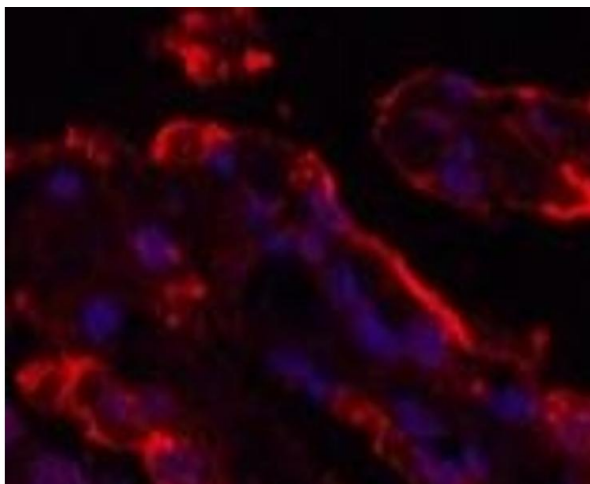
Immunohistochemistry (Paraffin-embedded Sections)

Image 1. Immunohistochemistry of paraffin-embedded Human thyroid tissue using Galectin 3 Monoclonal Antibody at dilution of 1:200.



Western Blotting

Image 2. Western Blot analysis of Hela cells using Galectin 3 Monoclonal Antibody at dilution of 1:3000.



Immunofluorescence

Image 3. Immunofluorescence analysis of Human lung cancer tissue using Galectin 3 Monoclonal Antibody at dilution of 1:200.