

Datasheet for ABIN7250056

## anti-CD68 antibody

### 3 Images



[Go to Product page](#)

### Overview

Quantity:	200 µL
Target:	CD68
Reactivity:	Human, Mouse, Rat
Host:	Mouse
Clonality:	Monoclonal
Conjugate:	This CD68 antibody is un-conjugated
Application:	Immunofluorescence (IF), Immunohistochemistry (Paraffin-embedded Sections) (IHC (p))

### Product Details

Immunogen:	Synthetic Peptide
Clone:	2K6
Isotype:	IgG
Characteristics:	Monoclonal Antibody
Purification:	Protein A purification

### Target Details

Target:	CD68
Alternative Name:	CD68 ( <a href="#">CD68 Products</a> )
Background:	CD68 is a type I transmembrane glycoprotein that is highly expressed by human monocytes and tissue macrophages. It belongs to the lysosomal/endosomal-associated membrane

## Target Details

glycoprotein (LAMP) family and primarily localizes to lysosomes and endosomes with a smaller fraction circulating to the cell surface. CD68 is also a member of the scavenger receptor family. It may play a role in phagocytic activities of tissue macrophages.

UniProt: [P34810](#)

## Application Details

Application Notes: IHC 1:100-1:300, IF 1:50-200

Restrictions: For Research Use only

## Handling

Format: Liquid

Concentration: 1 mg/mL

Buffer: PBS with 0.02 % sodium azide and 50 % glycerol pH 7.4.

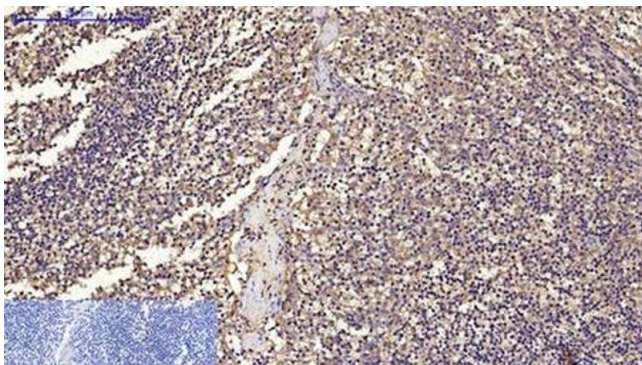
Preservative: Sodium azide

Precaution of Use: This product contains Sodium azide: a POISONOUS AND HAZARDOUS SUBSTANCE which should be handled by trained staff only.

Storage: -20 °C

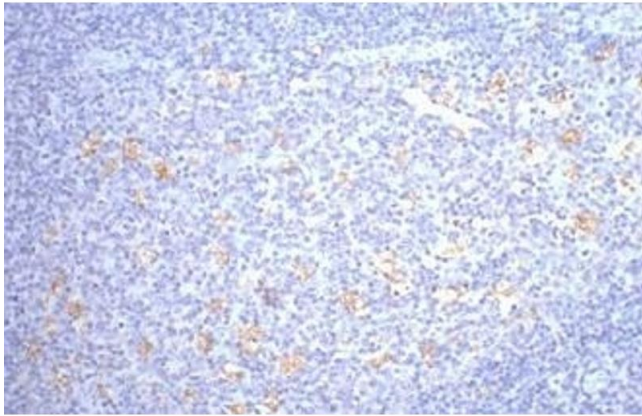
Storage Comment: Store at -20°C. Avoid freeze / thaw cycles.

## Images



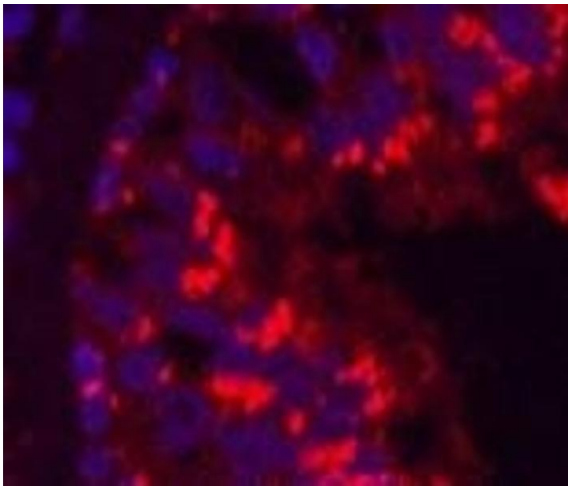
### Immunohistochemistry (Paraffin-embedded Sections)

**Image 1.** Immunohistochemistry of paraffin-embedded Human tonsil tissue using CD68 Monoclonal Antibody at dilution of 1:200.



### Immunohistochemistry (Paraffin-embedded Sections)

**Image 2.** Immunohistochemistry of paraffin-embedded Human tonsil tissue using CD68 Monoclonal Antibody at dilution of 1:200.



### Immunofluorescence

**Image 3.** Immunofluorescence analysis of Human lung cancer tissue using CD68 Monoclonal Antibody at dilution of 1:200.