

Datasheet for ABIN7250092

**anti-KIF7 antibody****2** Images[Go to Product page](#)

## Overview

Quantity:	200 µL
Target:	KIF7
Reactivity:	Human, Rat, Mouse
Host:	Mouse
Clonality:	Monoclonal
Conjugate:	This KIF7 antibody is un-conjugated
Application:	Immunohistochemistry (Paraffin-embedded Sections) (IHC (p)), Immunofluorescence (IF)

## Product Details

Immunogen:	Synthetic Peptide
Clone:	3I4
Isotype:	IgG
Characteristics:	Monoclonal Antibody
Purification:	Protein A purification

## Target Details

Target:	KIF7
Alternative Name:	KIF7 ( <a href="#">KIF7 Products</a> )
Background:	This gene encodes a cilia-associated protein belonging to the kinesin family. This protein plays a role in the sonic hedgehog (SHH) signaling pathway through the regulation of GLI

## Target Details

transcription factors. It functions as a negative regulator of the SHH pathway by preventing inappropriate activation of GLI2 in the absence of ligand, and as a positive regulator by preventing the processing of GLI3 into its repressor form. Mutations in this gene have been associated with various ciliopathies. KIF7 (Kinesin Family Member 7) is a Protein Coding gene. Diseases associated with KIF7 include Acrocallosal Syndrome and Hydroletharus Syndrome 2. Among its related pathways are Signaling by Hedgehog and Signaling by GPCR. GO annotations related to this gene include ATPase activity and microtubule motor activity. An important paralog of this gene is KIF27.

UniProt: [Q2M1P5](#)

Pathways: [Hedgehog Signaling](#)

## Application Details

Application Notes: IHC 1:100-1:300, IF 1:50-200

Restrictions: For Research Use only

## Handling

Format: Liquid

Concentration: 1 mg/mL

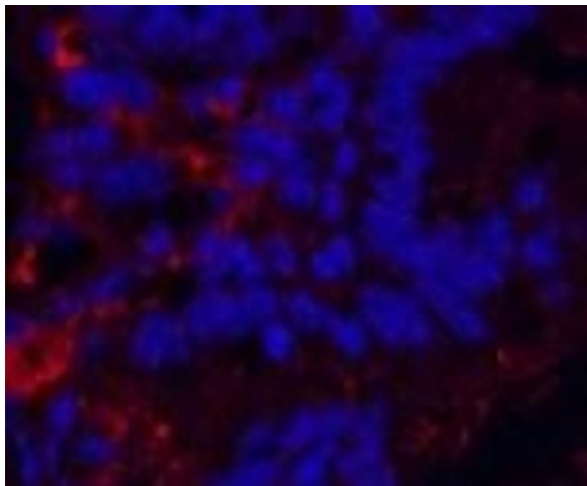
Buffer: PBS with 0.02 % sodium azide and 50 % glycerol pH 7.4.

Preservative: Sodium azide

Precaution of Use: This product contains Sodium azide: a POISONOUS AND HAZARDOUS SUBSTANCE which should be handled by trained staff only.

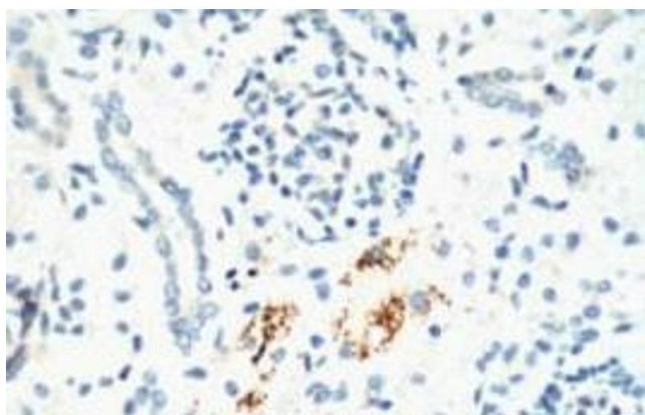
Storage: -20 °C

Storage Comment: Store at -20°C. Avoid freeze / thaw cycles.



#### Immunofluorescence

**Image 1.** Immunofluorescence analysis of Mouse colon tissue using KIF7 Monoclonal Antibody at dilution of 1:200.



#### Immunohistochemistry (Paraffin-embedded Sections)

**Image 2.** Immunohistochemistry of paraffin-embedded Mouse kidney tissue using KIF7 Monoclonal Antibody at dilution of 1:200.