

Datasheet for ABIN7250110  
**anti-alpha Fetoprotein antibody**

## 3 Images

[Go to Product page](#)

## Overview

Quantity:	200 µL
Target:	alpha Fetoprotein (AFP)
Reactivity:	Human
Host:	Mouse
Clonality:	Monoclonal
Conjugate:	This alpha Fetoprotein antibody is un-conjugated
Application:	Western Blotting (WB), Immunofluorescence (IF), Immunohistochemistry (Paraffin-embedded Sections) (IHC (p))

## Product Details

Immunogen:	Synthetic Peptide
Clone:	2L6
Isotype:	IgG
Characteristics:	Monoclonal Antibody
Purification:	Protein A purification

## Target Details

Target:	alpha Fetoprotein (AFP)
Alternative Name:	AFP ( <a href="#">AFP Products</a> )
Background:	This gene encodes alpha-fetoprotein, a major plasma protein produced by the yolk sac and the

## Target Details

liver during fetal life. Alpha-fetoprotein expression in adults is often associated with hepatoma or teratoma. However, hereditary persistence of alpha-fetoprotein may also be found in individuals with no obvious pathology. The protein is thought to be the fetal counterpart of serum albumin, and the alpha-fetoprotein and albumin genes are present in tandem in the same transcriptional orientation on chromosome 4. Alpha-fetoprotein is found in monomeric as well as dimeric and trimeric forms, and binds copper, nickel, fatty acids and bilirubin. The level of alpha-fetoprotein in amniotic fluid is used to measure renal loss of protein to screen for spina bifida and anencephaly.

Molecular Weight: 70 kDa

UniProt: [P02771](#)

Pathways: [C21-Steroid Hormone Metabolic Process](#)

## Application Details

Application Notes: WB 1:500-1:3000, IHC 1:50-1:300, IF 1:100-1:300

Restrictions: For Research Use only

## Handling

Format: Liquid

Concentration: 1 mg/mL

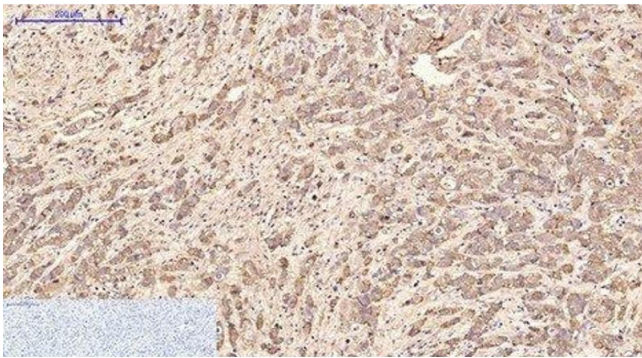
Buffer: PBS with 0.02 % sodium azide and 50 % glycerol pH 7.4.

Preservative: Sodium azide

Precaution of Use: This product contains Sodium azide: a POISONOUS AND HAZARDOUS SUBSTANCE which should be handled by trained staff only.

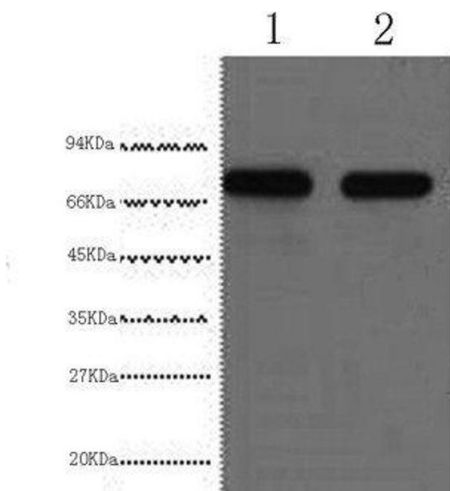
Storage: -20 °C

Storage Comment: Store at -20°C. Avoid freeze / thaw cycles.



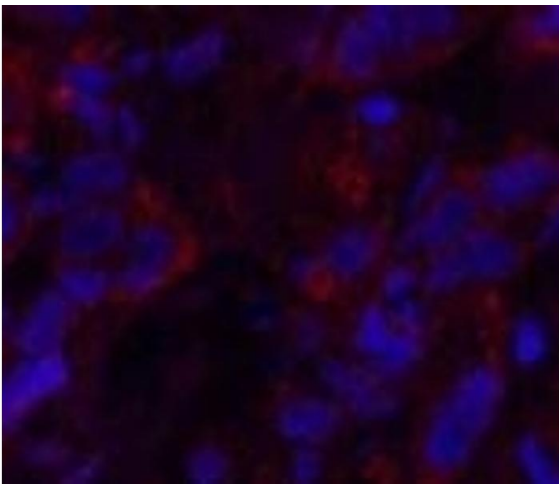
**Immunohistochemistry (Paraffin-embedded Sections)**

**Image 1.** Immunohistochemistry of paraffin-embedded Human breast cancer tissue using AFP Monoclonal Antibody at dilution of 1:200.



**Western Blotting**

**Image 2.** Western Blot analysis of HepG2 cells using AFP Monoclonal Antibody at dilution of 1:2000.



**Immunofluorescence**

**Image 3.** Immunofluorescence analysis of Human breast cancer tissue using AFP Monoclonal Antibody at dilution of 1:200.