



[Go to Product page](#)

Datasheet for ABIN7250113

## anti-CA9 antibody

### 3 Images

#### Overview

Quantity:	200 µL
Target:	CA9
Reactivity:	Human
Host:	Mouse
Clonality:	Monoclonal
Conjugate:	This CA9 antibody is un-conjugated
Application:	Western Blotting (WB), Immunofluorescence (IF), Immunohistochemistry (Paraffin-embedded Sections) (IHC (p))

#### Product Details

Immunogen:	Synthetic Peptide
Clone:	9B5
Isotype:	IgG
Characteristics:	Monoclonal Antibody
Purification:	Protein A purification

#### Target Details

Target:	CA9
Alternative Name:	CA9 ( <a href="#">CA9 Products</a> )
Background:	Carbonic anhydrases (CAs) are a large family of zinc metalloenzymes that catalyze the

## Target Details

---

reversible hydration of carbon dioxide. They participate in a variety of biological processes, including respiration, calcification, acid-base balance, bone resorption, and the formation of aqueous humor, cerebrospinal fluid, saliva, and gastric acid. They show extensive diversity in tissue distribution and in their subcellular localization. CA IX is a transmembrane protein and the only tumor-associated carbonic anhydrase isoenzyme known. It is expressed in all clear-cell renal cell carcinoma, but is not detected in normal kidney or most other normal tissues. It may be involved in cell proliferation and transformation.

---

Molecular Weight: Observed\_MW: 35-38 kDa  
Calculated\_MW: 50 kDa

UniProt: [Q16790](#)

## Application Details

---

Application Notes: WB 1:1000-1:3000, IHC 1:50-300, IF 1:50-1:200

Restrictions: For Research Use only

## Handling

---

Format: Liquid

Concentration: 1 mg/mL

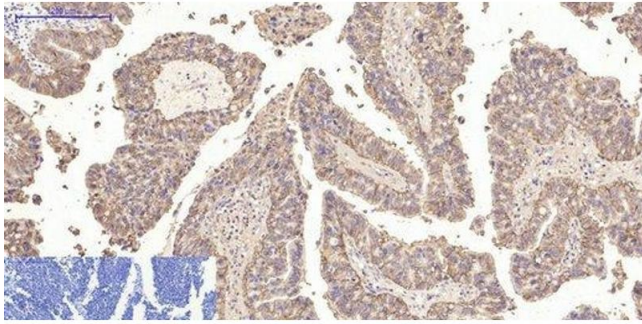
Buffer: PBS with 0.02 % sodium azide and 50 % glycerol pH 7.4.

Preservative: Sodium azide

Precaution of Use: This product contains Sodium azide: a POISONOUS AND HAZARDOUS SUBSTANCE which should be handled by trained staff only.

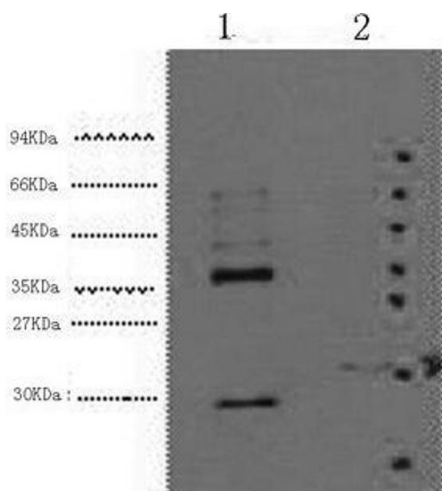
Storage: -20 °C

Storage Comment: Store at -20°C. Avoid freeze / thaw cycles.



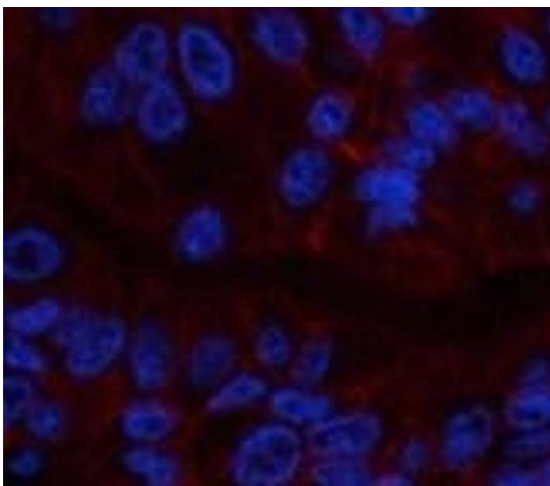
### Immunohistochemistry (Paraffin-embedded Sections)

**Image 1.** Immunohistochemistry of paraffin-embedded Human lung cancer tissue using CA9 Monoclonal Antibody at dilution of 1:200.



### Western Blotting

**Image 2.** Western Blot analysis of 1) HeLa, 2) 293T cells using CA9 Monoclonal Antibody at dilution of 1:5000.



### Immunofluorescence

**Image 3.** Immunofluorescence analysis of Human liver cancer tissue using CA9 Monoclonal Antibody at dilution of 1:200.