

Datasheet for ABIN7250128

anti-KRT17 antibody**3** Images[Go to Product page](#)

Overview

Quantity:	200 µL
Target:	KRT17
Reactivity:	Human
Host:	Mouse
Clonality:	Monoclonal
Conjugate:	This KRT17 antibody is un-conjugated
Application:	Western Blotting (WB), Immunofluorescence (IF), Immunohistochemistry (Paraffin-embedded Sections) (IHC (p)), Immunoprecipitation (IP)

Product Details

Immunogen:	Synthetic Peptide
Clone:	2K5
Isotype:	IgG
Characteristics:	Monoclonal Antibody
Purification:	Protein A purification

Target Details

Target:	KRT17
Alternative Name:	CK-17 (KRT17 Products)
Background:	May play a role in the formation and maintenance of various skin appendages, specifically in

Target Details

determining shape and orientation of hair. May be a marker of basal cell differentiation in complex epithelia and therefore indicative of a certain type of epithelial "stem cells". May act as an autoantigen in the immunopathogenesis of psoriasis, with certain peptide regions being a major target for autoreactive T-cells and hence causing their proliferation. Required for the correct growth of hair follicles, in particular for the persistence of the anagen (growth) state. Modulates the function of TNF-alpha in the specific context of hair cycling. Regulates protein synthesis and epithelial cell growth through binding to the adapter protein SFN and by stimulating Akt/mTOR pathway. Involved in tissue repair.

Molecular Weight:	Observed_MW: 48 kDa Calculated_MW: 48 kDa
-------------------	--

UniProt:	Q04695
----------	------------------------

Application Details

Application Notes:	WB 1:500-1:2000, IHC 1:50-300, IF 1:50-1:200, IP 1:100-1:300
--------------------	--

Restrictions:	For Research Use only
---------------	-----------------------

Handling

Format:	Liquid
---------	--------

Concentration:	1 mg/mL
----------------	---------

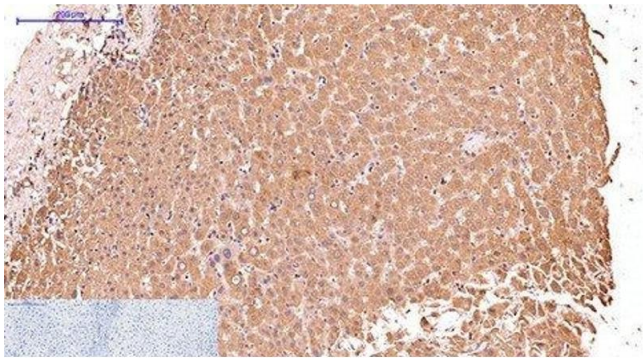
Buffer:	PBS with 0.02 % sodium azide and 50 % glycerol pH 7.4.
---------	--

Preservative:	Sodium azide
---------------	--------------

Precaution of Use:	This product contains Sodium azide: a POISONOUS AND HAZARDOUS SUBSTANCE which should be handled by trained staff only.
--------------------	--

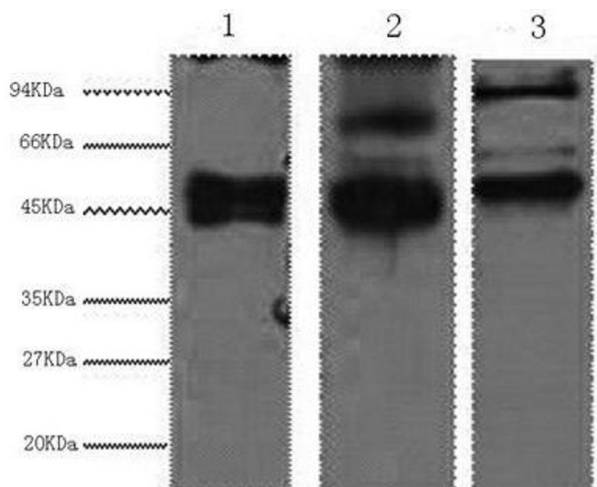
Storage:	-20 °C
----------	--------

Storage Comment:	Store at -20°C. Avoid freeze / thaw cycles.
------------------	---



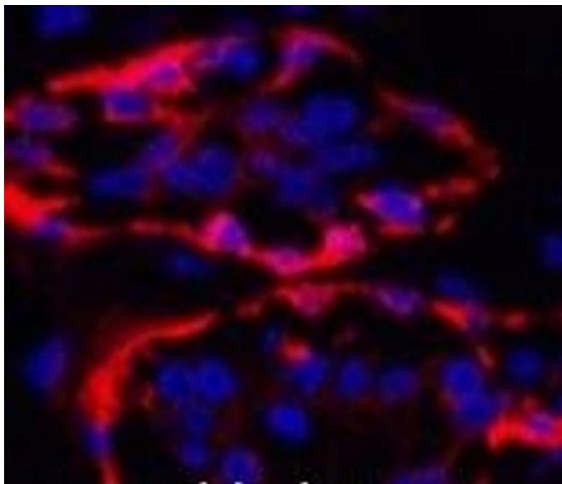
Immunohistochemistry (Paraffin-embedded Sections)

Image 1. Immunohistochemistry of paraffin-embedded Human liver tissue using CK-17 Monoclonal Antibody at dilution of 1:200.



Western Blotting

Image 2. Western Blot analysis of 1) HeLa, 2) MCF7, 3) 293T cells using CK-17 Monoclonal Antibody at dilution of 1:2000.



Immunofluorescence

Image 3. Immunofluorescence analysis of Human breast tissue using CK-17 Monoclonal Antibody at dilution of 1:200.