



Datasheet for ABIN7250143
anti-XRCC4 antibody



[Go to Product page](#)

3 Images

Overview

Quantity:	200 µL
Target:	XRCC4
Reactivity:	Human
Host:	Mouse
Clonality:	Monoclonal
Conjugate:	This XRCC4 antibody is un-conjugated
Application:	Western Blotting (WB), Immunofluorescence (IF), Immunoprecipitation (IP), Immunohistochemistry (Paraffin-embedded Sections) (IHC (p))

Product Details

Immunogen:	Synthetic Peptide
Clone:	8K2
Isotype:	IgG
Characteristics:	Monoclonal Antibody
Purification:	Protein A purification

Target Details

Target:	XRCC4
Alternative Name:	XRCC4 (XRCC4 Products)
Background:	Involved in DNA non-homologous end joining (NHEJ) required for double-strand break repair

Target Details

and V(D)J recombination. Binds to DNA and to DNA ligase IV (LIG4). The LIG4-XRCC4 complex is responsible for the NHEJ ligation step, and XRCC4 enhances the joining activity of LIG4. Binding of the LIG4-XRCC4 complex to DNA ends is dependent on the assembly of the DNA-dependent protein kinase complex DNA-PK to these DNA ends.

Molecular Weight: Observed_MW: 38 kDa
Calculated_MW: 38 kDa

UniProt: [Q13426](#)

Pathways: [DNA Damage Repair](#), [Production of Molecular Mediator of Immune Response](#)

Application Details

Application Notes: WB 1:500-1:2000, IHC 1:50-300, IF 1:50-1:200, IP 1:100-1:300

Restrictions: For Research Use only

Handling

Format: Liquid

Concentration: 1 mg/mL

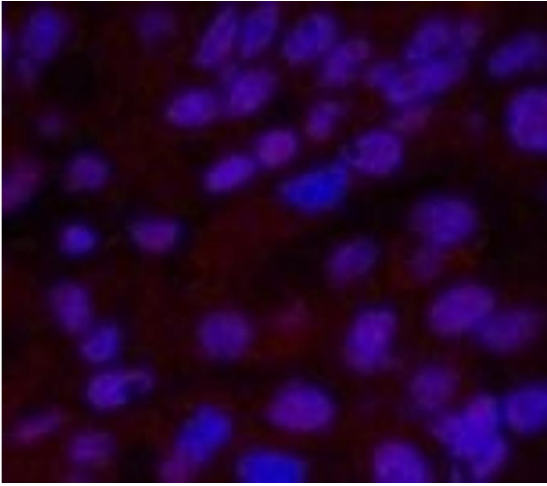
Buffer: PBS with 0.02 % sodium azide and 50 % glycerol pH 7.4.

Preservative: Sodium azide

Precaution of Use: This product contains Sodium azide: a POISONOUS AND HAZARDOUS SUBSTANCE which should be handled by trained staff only.

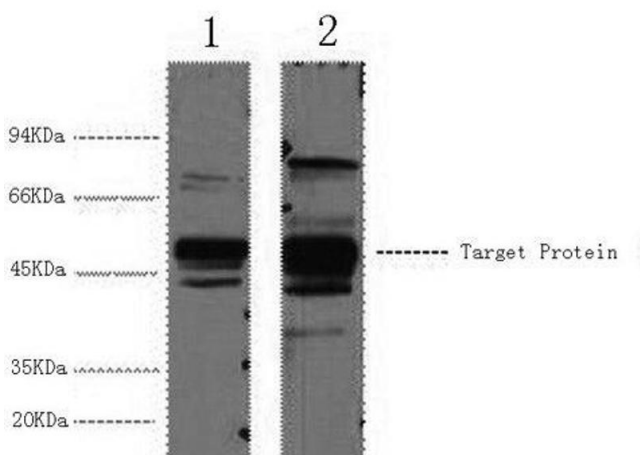
Storage: -20 °C

Storage Comment: Store at -20°C. Avoid freeze / thaw cycles.



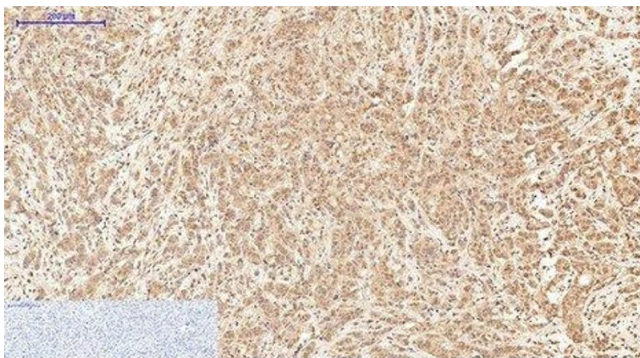
Immunofluorescence

Image 1. Immunofluorescence analysis of Human liver cancer tissue using XRCC4 Monoclonal Antibody at dilution of 1:200.



Western Blotting

Image 2. Western Blot analysis of 1) HeLa, 2) 293T cells using XRCC4 Monoclonal Antibody at dilution of 1:3000.



Immunohistochemistry (Paraffin-embedded Sections)

Image 3. Immunohistochemistry of paraffin-embedded Human breast cancer tissue using XRCC4 Monoclonal Antibody at dilution of 1:200.