



[Go to Product page](#)

Datasheet for ABIN7250170

anti-COL3A1 antibody

3 Images

Overview

Quantity:	200 µL
Target:	COL3A1
Reactivity:	Human, Mouse, Rat
Host:	Mouse
Clonality:	Monoclonal
Conjugate:	This COL3A1 antibody is un-conjugated
Application:	Western Blotting (WB), Immunofluorescence (IF), Immunohistochemistry (Paraffin-embedded Sections) (IHC (p))

Product Details

Immunogen:	Synthetic Peptide
Clone:	5G2
Isotype:	IgG
Characteristics:	Monoclonal Antibody
Purification:	Protein A purification

Target Details

Target:	COL3A1
Alternative Name:	COL3A1 (COL3A1 Products)
Background:	This gene encodes the pro-alpha1 chains of type III collagen, a fibrillar collagen that is found in

Target Details

extensible connective tissues such as skin, lung, uterus, intestine and the vascular system, frequently in association with type I collagen. Mutations in this gene are associated with Ehlers-Danlos syndrome types IV, and with aortic and arterial aneurysms. Two transcripts, resulting from the use of alternate polyadenylation signals, have been identified for this gene.

Molecular Weight: Observed_MW: 138 kDa
Calculated_MW: 139 kDa

UniProt: [P02461](#)

Pathways: [Autophagy](#), [Growth Factor Binding](#)

Application Details

Application Notes: WB 1:500-1:2000, IHC 1:50-300, IF 1:100-1:300

Restrictions: For Research Use only

Handling

Format: Liquid

Concentration: 1 mg/mL

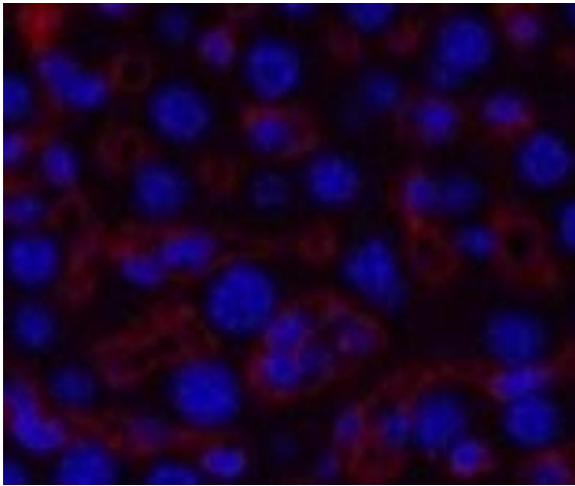
Buffer: PBS with 0.02 % sodium azide and 50 % glycerol pH 7.4.

Preservative: Sodium azide

Precaution of Use: This product contains Sodium azide: a POISONOUS AND HAZARDOUS SUBSTANCE which should be handled by trained staff only.

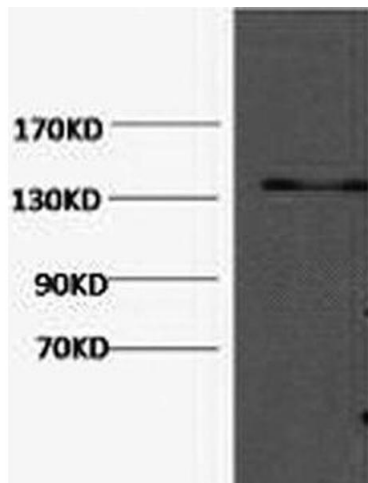
Storage: -20 °C

Storage Comment: Store at -20°C. Avoid freeze / thaw cycles.



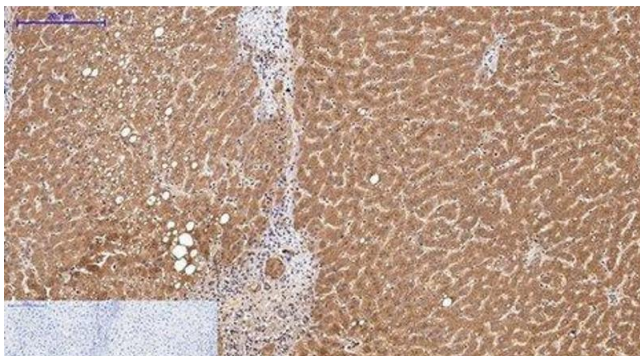
Immunofluorescence

Image 1. Immunofluorescence analysis of Mouse liver tissue using COL3A1 Monoclonal Antibody at dilution of 1:200.



Western Blotting

Image 2. Western Blot analysis of Hela cells using COL3A1 Monoclonal Antibody at dilution of 1:1000.



Immunohistochemistry (Paraffin-embedded Sections)

Image 3. Immunohistochemistry of paraffin-embedded Human liver tissue using COL3A1 Monoclonal Antibody at dilution of 1:200.