



[Go to Product page](#)

Datasheet for ABIN7250188
anti-Fibronectin 1 antibody

3 Images

Overview

Quantity:	200 µL
Target:	Fibronectin 1 (FN1)
Reactivity:	Human, Mouse, Rat
Host:	Mouse
Clonality:	Monoclonal
Conjugate:	This Fibronectin 1 antibody is un-conjugated
Application:	Western Blotting (WB), Immunohistochemistry (Paraffin-embedded Sections) (IHC (p)), Immunofluorescence (IF)

Product Details

Immunogen:	Synthetic Peptide
Clone:	9A5
Isotype:	IgG
Characteristics:	Monoclonal Antibody
Purification:	Protein A purification

Target Details

Target:	Fibronectin 1 (FN1)
Alternative Name:	FN1 (FN1 Products)
Background:	This gene encodes fibronectin, a glycoprotein present in a soluble dimeric form in plasma, and

Target Details

in a dimeric or multimeric form at the cell surface and in extracellular matrix. Fibronectin is involved in cell adhesion and migration processes including embryogenesis, wound healing, blood coagulation, host defense, and metastasis. The gene has three regions subject to alternative splicing, with the potential to produce 20 different transcript variants. However, the full-length nature of some variants has not been determined.

Molecular Weight: Observed_MW: 285 kDa
Calculated_MW: 263 kDa

UniProt: [P02751](#)

Pathways: [Cellular Response to Molecule of Bacterial Origin](#), [Carbohydrate Homeostasis](#), [Autophagy](#)

Application Details

Application Notes: WB 1:500-1:2000, IHC 1:50-1:300, IF 1:100-1:300

Restrictions: For Research Use only

Handling

Format: Liquid

Concentration: 1 mg/mL

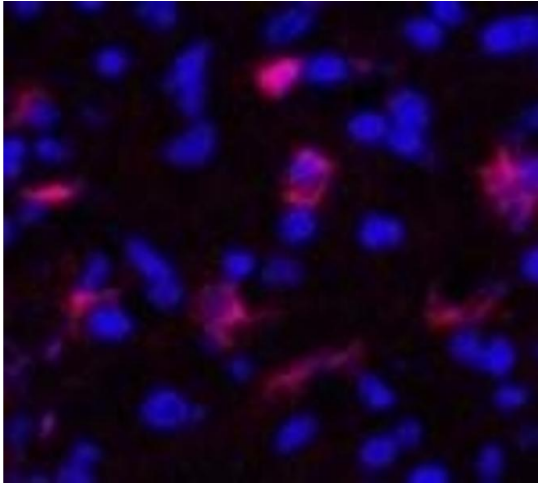
Buffer: PBS with 0.02 % sodium azide and 50 % glycerol pH 7.4.

Preservative: Sodium azide

Precaution of Use: This product contains Sodium azide: a POISONOUS AND HAZARDOUS SUBSTANCE which should be handled by trained staff only.

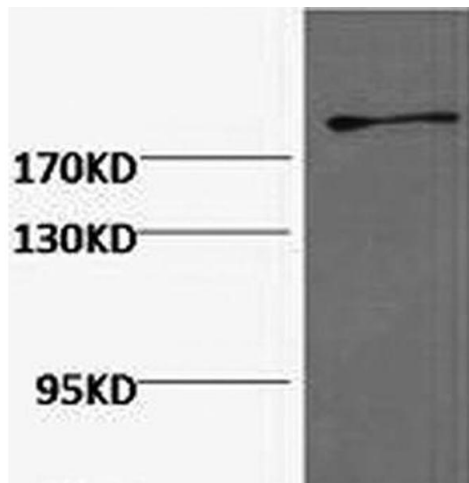
Storage: -20 °C

Storage Comment: Store at -20°C. Avoid freeze / thaw cycles.



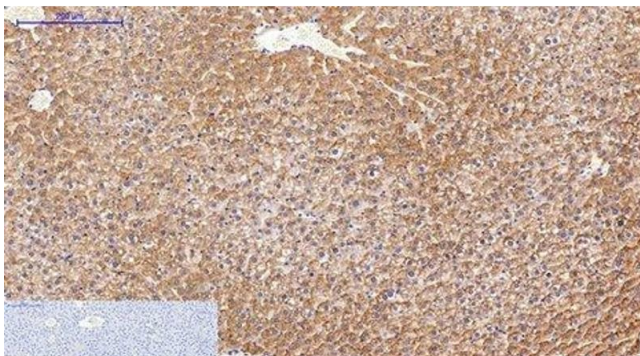
Immunofluorescence

Image 1. Immunofluorescence analysis of Human appendix tissue using FN1 Monoclonal Antibody at dilution of 1:200.



Western Blotting

Image 2. Western Blot analysis of Hela cells using FN1 Monoclonal Antibody at dilution of 1:2000.



Immunohistochemistry (Paraffin-embedded Sections)

Image 3. Immunohistochemistry of paraffin-embedded Rat liver tissue using FN1 Monoclonal Antibody at dilution of 1:200.