

Datasheet for ABIN7250221  
**anti-CD2 antibody**[Go to Product page](#)

## 2 Images

## Overview

Quantity:	200 µL
Target:	CD2
Reactivity:	Human, Mouse, Rat
Host:	Mouse
Clonality:	Monoclonal
Conjugate:	This CD2 antibody is un-conjugated
Application:	Immunohistochemistry (Paraffin-embedded Sections) (IHC (p))

## Product Details

Immunogen:	Synthetic Peptide
Clone:	4C3
Isotype:	IgG
Characteristics:	Monoclonal Antibody
Purification:	Protein A purification

## Target Details

Target:	CD2
Alternative Name:	CD2 ( <a href="#">CD2 Products</a> )
Background:	The protein encoded by this gene is a surface antigen found on all peripheral blood T-cells. The encoded protein interacts with LFA3 (CD58) on antigen presenting cells to optimize immune

## Target Details

recognition. A locus control region (LCR) has been found in the 3' flanking sequence of this gene. CD2 (CD2 Molecule) is a Protein Coding gene. Diseases associated with CD2 include Penis Squamous Cell Carcinoma and Immune Defect Due To Absence Of Thymus. Among its related pathways are PEDF Induced Signaling and TGF-Beta Pathway. GO annotations related to this gene include protein homodimerization activity and receptor activity.

UniProt: [P06729](#)

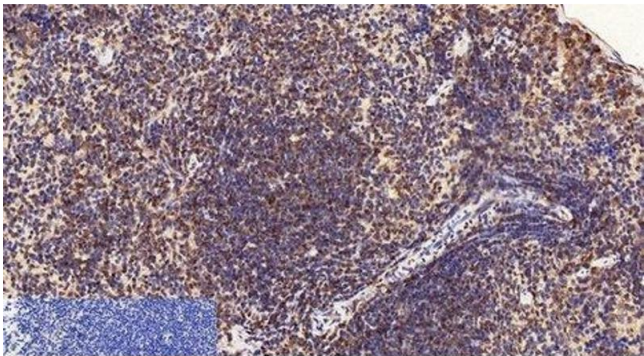
## Application Details

Application Notes:	IHC 1:50-200
Restrictions:	For Research Use only

## Handling

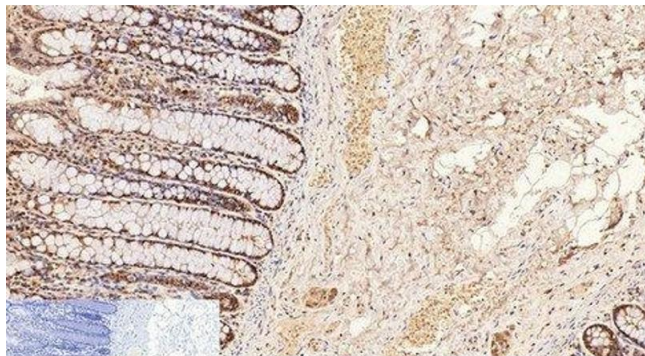
Format:	Liquid
Concentration:	1 mg/mL
Buffer:	PBS with 0.02 % sodium azide and 50 % glycerol pH 7.4.
Preservative:	Sodium azide
Precaution of Use:	This product contains Sodium azide: a POISONOUS AND HAZARDOUS SUBSTANCE which should be handled by trained staff only.
Storage:	-20 °C
Storage Comment:	Store at -20°C. Avoid freeze / thaw cycles.

## Images



### Immunohistochemistry (Paraffin-embedded Sections)

**Image 1.** Immunohistochemistry of paraffin-embedded Mouse spleen tissue using CD2 Monoclonal Antibody at dilution of 1:200.



#### Immunohistochemistry (Paraffin-embedded Sections)

**Image 2.** Immunohistochemistry of paraffin-embedded Human colon tissue using CD2 Monoclonal Antibody at dilution of 1:200.