

Datasheet for ABIN7250239
anti-Lactoferrin antibody



[Go to Product page](#)

2 Images

Overview

Quantity:	200 µL
Target:	Lactoferrin (LTF)
Reactivity:	Human
Host:	Mouse
Clonality:	Monoclonal
Conjugate:	This Lactoferrin antibody is un-conjugated
Application:	ELISA, Immunofluorescence (IF), Immunohistochemistry (Paraffin-embedded Sections) (IHC (p))

Product Details

Immunogen:	Synthetic Peptide
Clone:	1A6
Isotype:	IgG
Characteristics:	Monoclonal Antibody
Purification:	Protein A purification

Target Details

Target:	Lactoferrin (LTF)
Alternative Name:	LTF (LTF Products)
Background:	This gene is a member of the transferrin family of genes and its protein product is found in the

Target Details

secondary granules of neutrophils. The protein is a major iron-binding protein in milk and body secretions with an antimicrobial activity, making it an important component of the non-specific immune system. The protein demonstrates a broad spectrum of properties, including regulation of iron homeostasis, host defense against a broad range of microbial infections, anti-inflammatory activity, regulation of cellular growth and differentiation and protection against cancer development and metastasis. Alternatively spliced transcript variants encoding different isoforms have been found for this gene.

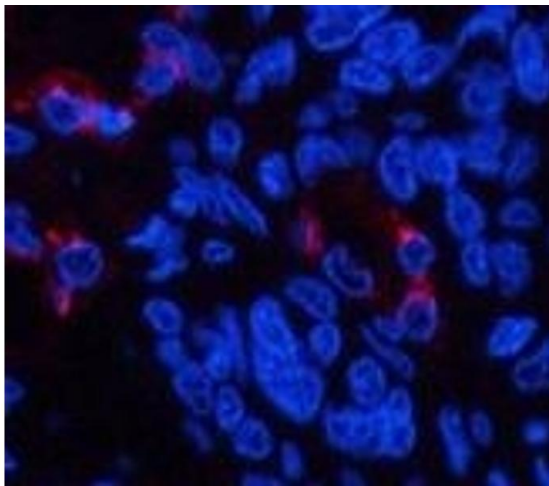
UniProt:	P02788
Pathways:	Transition Metal Ion Homeostasis

Application Details

Application Notes:	IHC 1:50-300, IF 1:50-1:200, ELISA 1:5000-10000
Restrictions:	For Research Use only

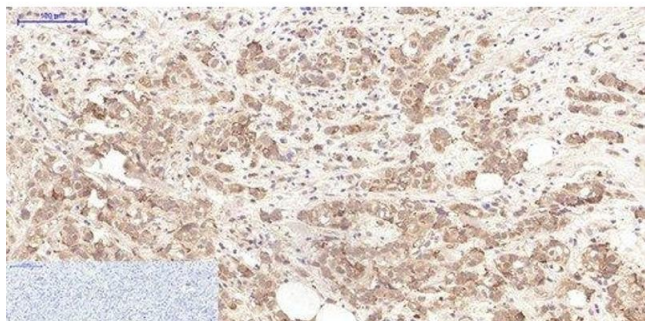
Handling

Format:	Liquid
Concentration:	1 mg/mL
Buffer:	PBS with 0.02 % sodium azide and 50 % glycerol pH 7.4.
Preservative:	Sodium azide
Precaution of Use:	This product contains Sodium azide: a POISONOUS AND HAZARDOUS SUBSTANCE which should be handled by trained staff only.
Storage:	-20 °C
Storage Comment:	Store at -20°C. Avoid freeze / thaw cycles.



Immunofluorescence

Image 1. Immunofluorescence analysis of Human lung cancer tissue using LTF Monoclonal Antibody at dilution of 1:200.



Immunohistochemistry (Paraffin-embedded Sections)

Image 2. Immunohistochemistry of paraffin-embedded Human breast cancer tissue using LTF Monoclonal Antibody at dilution of 1:200.