



[Go to Product page](#)

Datasheet for ABIN7250245

anti-Smooth Muscle Actin antibody

3 Images

Overview

Quantity:	200 µL
Target:	Smooth Muscle Actin (ACTA2)
Reactivity:	Human, Rat, Mouse
Host:	Mouse
Clonality:	Monoclonal
Conjugate:	This Smooth Muscle Actin antibody is un-conjugated
Application:	Western Blotting (WB), Immunofluorescence (IF), Immunohistochemistry (Paraffin-embedded Sections) (IHC (p))

Product Details

Immunogen:	Synthetic Peptide
Clone:	2E2
Isotype:	IgG
Characteristics:	Monoclonal Antibody
Purification:	Protein A purification

Target Details

Target:	Smooth Muscle Actin (ACTA2)
Alternative Name:	ACTA2 (ACTA2 Products)
Background:	Actins are highly conserved proteins that are involved in various types of cell motility and are

Target Details

ubiquitously expressed in all eukaryotic cells.

Molecular Weight: 42 kDa

UniProt: [P62736](#)

Pathways: [Myometrial Relaxation and Contraction, Skeletal Muscle Fiber Development](#)

Application Details

Application Notes: WB 1:500-1:2000, IHC 1:100-1:300, IF 1:100-1:300

Restrictions: For Research Use only

Handling

Format: Liquid

Concentration: 1 mg/mL

Buffer: PBS with 0.02 % sodium azide and 50 % glycerol pH 7.4.

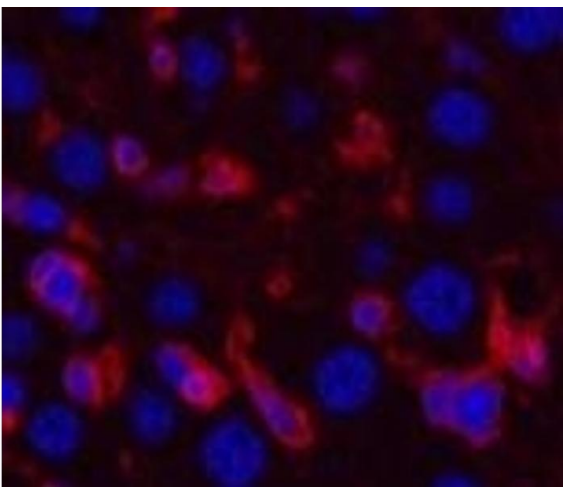
Preservative: Sodium azide

Precaution of Use: This product contains Sodium azide: a POISONOUS AND HAZARDOUS SUBSTANCE which should be handled by trained staff only.

Storage: -20 °C

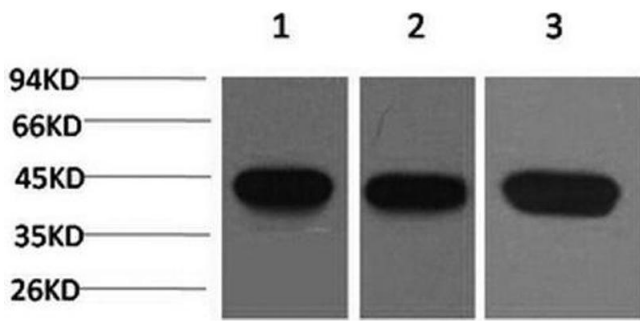
Storage Comment: Store at -20°C. Avoid freeze / thaw cycles.

Images



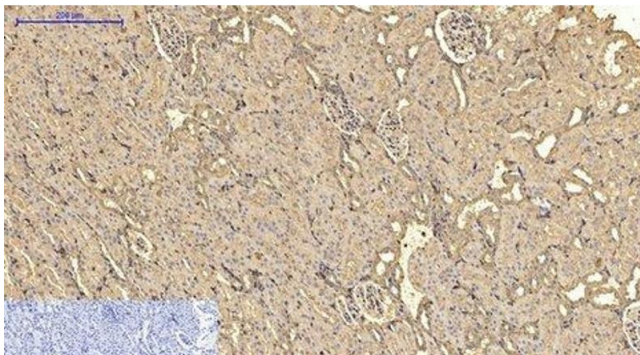
Immunofluorescence

Image 1. Immunofluorescence analysis of Mouse liver tissue using ACTA2 Monoclonal Antibody at dilution of 1:200.



Western Blotting

Image 2. Western Blot analysis of 1) HeLa, 2) 3T3, 3) Rat brain with ACTA2 Monoclonal Antibody.



Immunohistochemistry (Paraffin-embedded Sections)

Image 3. Immunohistochemistry of paraffin-embedded Rat kidney tissue using ACTA2 Monoclonal Antibody at dilution of 1:200.