

Datasheet for ABIN7250257
anti-Cytochrome C antibody



[Go to Product page](#)

3 Images

Overview

Quantity:	200 µL
Target:	Cytochrome C (CYCS)
Reactivity:	Human, Rat, Mouse
Host:	Mouse
Clonality:	Monoclonal
Conjugate:	This Cytochrome C antibody is un-conjugated
Application:	Western Blotting (WB), Immunofluorescence (IF), Immunohistochemistry (Paraffin-embedded Sections) (IHC (p))

Product Details

Immunogen:	Recombinant Protein
Clone:	8G3
Isotype:	IgG
Characteristics:	Monoclonal Antibody
Purification:	Protein A purification

Target Details

Target:	Cytochrome C (CYCS)
Alternative Name:	CYCS (CYCS Products)
Background:	This gene encodes a small heme protein that functions as a central component of the electron

Target Details

transport chain in mitochondria. The encoded protein associates with the inner membrane of the mitochondrion where it accepts electrons from cytochrome b and transfers them to the cytochrome oxidase complex. This protein is also involved in initiation of apoptosis. Mutations in this gene are associated with autosomal dominant nonsyndromic thrombocytopenia. Numerous processed pseudogenes of this gene are found throughout the human genome.

Molecular Weight: 14 kDa

UniProt: [P99999](#)

Pathways: [Apoptosis](#), [Caspase Cascade in Apoptosis](#), [Positive Regulation of Endopeptidase Activity](#)

Application Details

Application Notes: WB 1:500-1:2000, IHC 1:100-1:300, IF 1:100-1:300

Restrictions: For Research Use only

Handling

Format: Liquid

Concentration: 1 mg/mL

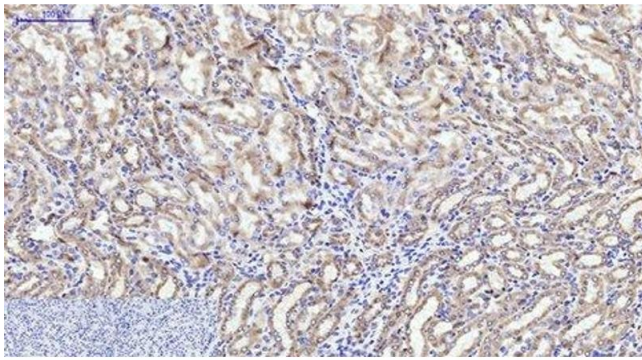
Buffer: PBS with 0.02 % sodium azide and 50 % glycerol pH 7.4.

Preservative: Sodium azide

Precaution of Use: This product contains Sodium azide: a POISONOUS AND HAZARDOUS SUBSTANCE which should be handled by trained staff only.

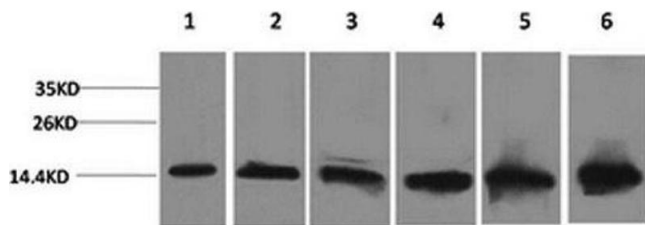
Storage: -20 °C

Storage Comment: Store at -20°C. Avoid freeze / thaw cycles.



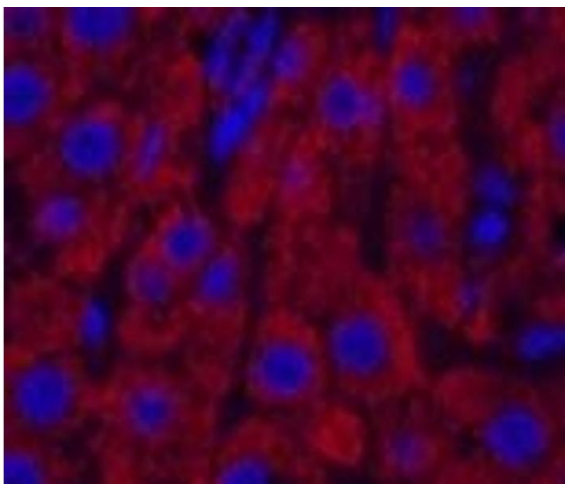
Immunohistochemistry (Paraffin-embedded Sections)

Image 1. Immunohistochemistry of paraffin-embedded Mouse kidney tissue using CYCS Monoclonal Antibody at dilution of 1:200.



Western Blotting

Image 2. Western Blot analysis of 1) Hela, 2) 293T, 3) 3T3, 4) Mouse liver, 5) Rat liver, 6) Rat kidney with CYCS Monoclonal Antibody.



Immunofluorescence

Image 3. Immunofluorescence analysis of Rat liver tissue using CYCS Monoclonal Antibody at dilution of 1:200.