



[Go to Product page](#)

Datasheet for ABIN7250260  
**anti-beta Catenin antibody**

3 Images

### Overview

Quantity:	200 µL
Target:	beta Catenin (CATNB)
Reactivity:	Human, Mouse, Rat
Host:	Mouse
Clonality:	Monoclonal
Conjugate:	This beta Catenin antibody is un-conjugated
Application:	Western Blotting (WB), Immunofluorescence (IF), Immunohistochemistry (Paraffin-embedded Sections) (IHC (p))

### Product Details

Immunogen:	Recombinant Protein
Clone:	2E4
Isotype:	IgG
Characteristics:	Monoclonal Antibody
Purification:	Protein A purification

### Target Details

Target:	beta Catenin (CATNB)
Alternative Name:	Catenin beta ( <a href="#">CATNB Products</a> )
Background:	Key downstream component of the canonical Wnt signaling pathway. In the absence of Wnt,

## Target Details

---

forms a complex with AXIN1, AXIN2, APC, CSNK1A1 and GSK3B that promotes phosphorylation on N-terminal Ser and Thr residues and ubiquitination of CTNNB1 via BTRC and its subsequent degradation by the proteasome. In the presence of Wnt ligand, CTNNB1 is not ubiquitinated and accumulates in the nucleus, where it acts as a coactivator for transcription factors of the TCF/LEF family, leading to activate Wnt responsive genes. Involved in the regulation of cell adhesion. The majority of beta-catenin is localized to the cell membrane and is part of E-cadherin/catenin adhesion complexes which are proposed to couple cadherins to the actin cytoskeleton.

---

Molecular Weight: 92 kDa

---

UniProt: [P35222](#)

---

Pathways: [Peptide Hormone Metabolism](#)

## Application Details

---

---

Application Notes: WB 1:500-1:2000, IHC 1:100-1:300, IF 1:100-1:300

---

Restrictions: For Research Use only

## Handling

---

---

Format: Liquid

---

Concentration: 1 mg/mL

---

Buffer: PBS with 0.02 % sodium azide and 50 % glycerol pH 7.4.

---

Preservative: Sodium azide

---

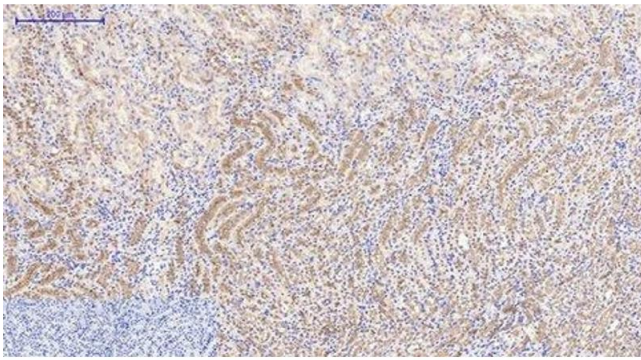
Precaution of Use: This product contains Sodium azide: a POISONOUS AND HAZARDOUS SUBSTANCE which should be handled by trained staff only.

---

Storage: -20 °C

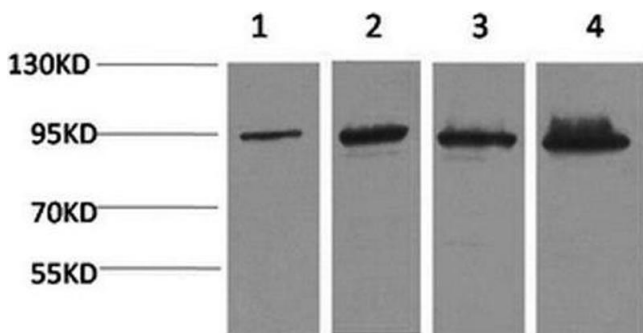
---

Storage Comment: Store at -20°C. Avoid freeze / thaw cycles.



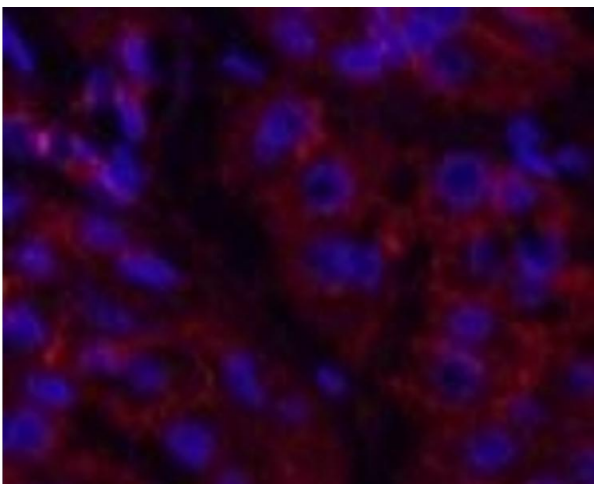
### Immunohistochemistry (Paraffin-embedded Sections)

**Image 1.** Immunohistochemistry of paraffin-embedded Mouse kidney tissue using Catenin beta Monoclonal Antibody at dilution of 1:200.



### Western Blotting

**Image 2.** Western Blot analysis of 1) Hela, 2) 293T, 3) Mouse liver, 4) Rat liver with Catenin beta Monoclonal Antibody



### Immunofluorescence

**Image 3.** Immunofluorescence analysis of Human stomach cancer tissue using Catenin beta Monoclonal Antibody at dilution of 1:200.