

Datasheet for ABIN7250269

anti-MICU1 antibody

3 Images

[Go to Product page](#)

Overview

Quantity:	200 µL
Target:	MICU1
Reactivity:	Human, Mouse, Rat
Host:	Mouse
Clonality:	Monoclonal
Conjugate:	This MICU1 antibody is un-conjugated
Application:	Western Blotting (WB), Immunohistochemistry (Paraffin-embedded Sections) (IHC (p)), Immunofluorescence (IF)

Product Details

Immunogen:	Recombinant Protein
Clone:	4E7
Isotype:	IgG
Characteristics:	Monoclonal Antibody
Purification:	Protein A purification

Target Details

Target:	MICU1
Alternative Name:	MICU1 (MICU1 Products)
Background:	This gene encodes an essential regulator of mitochondrial Ca ²⁺ uptake under basal conditions.

Target Details

The encoded protein interacts with the mitochondrial calcium uniporter, a mitochondrial inner membrane Ca²⁺ channel, and is essential in preventing mitochondrial Ca²⁺ overload, which can cause excessive production of reactive oxygen species and cell stress. Alternatively spliced transcript variants encoding different isoforms have been described. MICU1 (Mitochondrial Calcium Uptake 1) is a Protein Coding gene. Diseases associated with MICU1 include Myopathy With Extrapyrimalidal Signs and Fish Allergy. Among its related pathways are Ca, cAMP and Lipid Signaling. GO annotations related to this gene include calcium ion binding and protein heterodimerization activity. An important paralog of this gene is MICU3.

Molecular Weight: 55 kDa

UniProt: [Q9BPX6](#)

Application Details

Application Notes: WB 1:500-1:2000, IHC 1:100-1:200, IF 1:100-1:300

Restrictions: For Research Use only

Handling

Format: Liquid

Concentration: 1 mg/mL

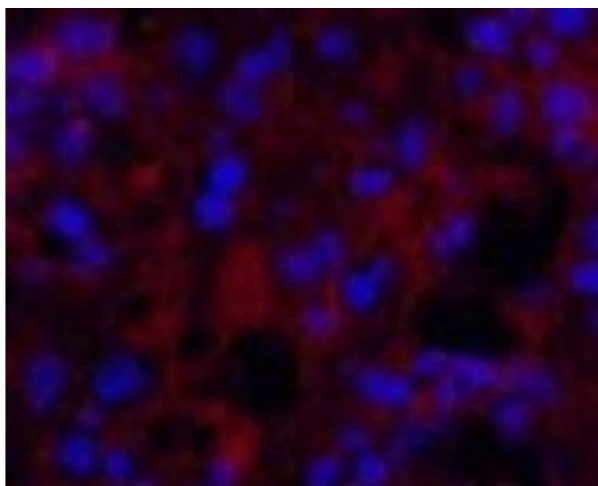
Buffer: PBS with 0.02 % sodium azide and 50 % glycerol pH 7.4.

Preservative: Sodium azide

Precaution of Use: This product contains Sodium azide: a POISONOUS AND HAZARDOUS SUBSTANCE which should be handled by trained staff only.

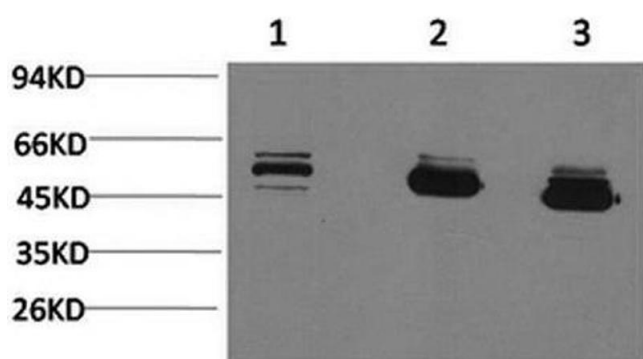
Storage: -20 °C

Storage Comment: Store at -20°C. Avoid freeze / thaw cycles.



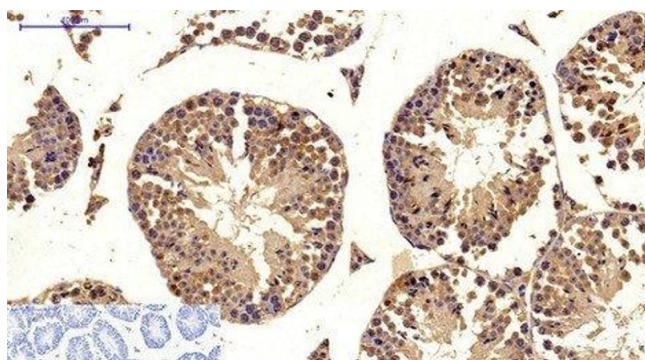
Immunofluorescence

Image 1. Immunofluorescence analysis of Human appendix tissue using MICU1 Monoclonal Antibody at dilution of 1:200.



Western Blotting

Image 2. Western Blot analysis of 1) MCF7, 2) Mouse brain, 3) Rat brain with MICU1 Monoclonal Antibody.



Immunohistochemistry (Paraffin-embedded Sections)

Image 3. Immunohistochemistry of paraffin-embedded Mouse testis tissue using MICU1 Monoclonal Antibody at dilution of 1:200.