

Datasheet for ABIN7250299

**anti-PPIB antibody**

3 Images

[Go to Product page](#)

## Overview

Quantity:	200 µL
Target:	PPIB
Reactivity:	Human, Mouse, Rat
Host:	Mouse
Clonality:	Monoclonal
Conjugate:	This PPIB antibody is un-conjugated
Application:	Western Blotting (WB), Immunohistochemistry (Paraffin-embedded Sections) (IHC (p)), Immunofluorescence (IF)

## Product Details

Immunogen:	Synthetic Peptide
Clone:	4D7
Isotype:	IgG
Characteristics:	Monoclonal Antibody
Purification:	Protein A purification

## Target Details

Target:	PPIB
Alternative Name:	PPIB ( <a href="#">PPIB Products</a> )
Background:	The protein encoded by this gene is a cyclosporine-binding protein and is mainly located within

## Target Details

the endoplasmic reticulum. It is associated with the secretory pathway and released in biological fluids. This protein can bind to cells derived from T- and B-lymphocytes, and may regulate cyclosporine A-mediated immunosuppression. Variants have been identified in this protein that give rise to recessive forms of osteogenesis imperfecta.

Molecular Weight: 21 kDa

UniProt: [P23284](#)

## Application Details

Application Notes: WB 1:1000-2000, IHC 1:50-300, IF 1:50-300

Restrictions: For Research Use only

## Handling

Format: Liquid

Concentration: 1 mg/mL

Buffer: PBS with 0.02 % sodium azide, 0.5 % BSA and 50 % glycerol, pH 7.4

Preservative: Sodium azide

Precaution of Use: This product contains Sodium azide: a POISONOUS AND HAZARDOUS SUBSTANCE which should be handled by trained staff only.

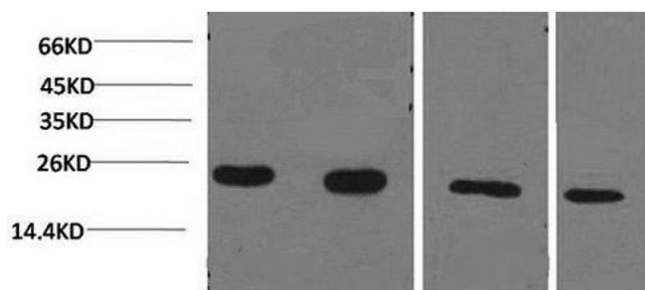
Storage: -20 °C

Storage Comment: Store at -20°C. Avoid freeze / thaw cycles.



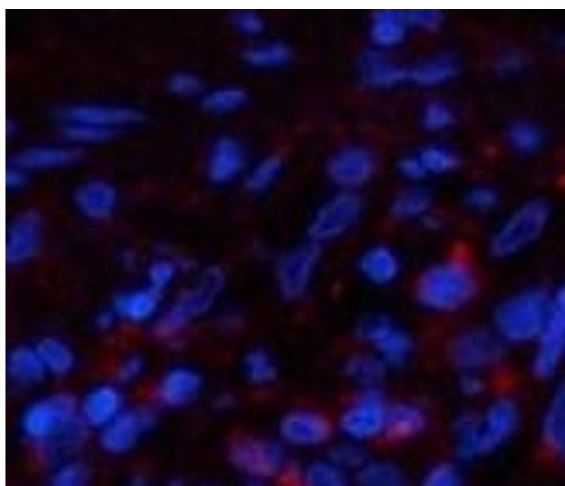
#### Immunohistochemistry (Paraffin-embedded Sections)

**Image 1.** Immunohistochemistry of paraffin-embedded Human uterus tissue using PPIB Monoclonal Antibody at dilution of 1:200.



#### Western Blotting

**Image 2.** Western Blot analysis of 1) Jurkat, 2)293T, 3)Rat liver, 4)3T3 using PPIB Monoclonal Antibody at dilution of 1:2000.



#### Immunofluorescence

**Image 3.** Immunofluorescence analysis of Human lung tissue using PPIB Monoclonal Antibody at dilution of 1:200.