



Datasheet for ABIN7250317

## anti-CST3 antibody

3 Images



[Go to Product page](#)

### Overview

Quantity:	200 µL
Target:	CST3
Reactivity:	Human
Host:	Mouse
Clonality:	Monoclonal
Conjugate:	This CST3 antibody is un-conjugated
Application:	Western Blotting (WB), ELISA, Immunohistochemistry (Paraffin-embedded Sections) (IHC (p)), Immunofluorescence (IF)

### Product Details

Immunogen:	Recombinant Protein of Cystatin C of CST3
Clone:	3B6
Isotype:	IgG
Characteristics:	Monoclonal Antibody
Purification:	Protein A purification

### Target Details

Target:	CST3
Alternative Name:	CST3 ( <a href="#">CST3 Products</a> )
Background:	As an inhibitor of cysteine proteinases, this protein is thought to serve an important

## Target Details

physiological role as a local regulator of this enzyme activity. Known to inhibit cathepsin B, H, and L.

Molecular Weight: 14 kDa

UniProt: [P01034](#)

## Application Details

Application Notes: WB 1:1000-2000, IHC 1:100-200, IF 1:50-1:200

Restrictions: For Research Use only

## Handling

Format: Liquid

Concentration: 1 mg/mL

Buffer: PBS with 0.02 % sodium azide, 0.5 % BSA and 50 % glycerol, pH 7.4

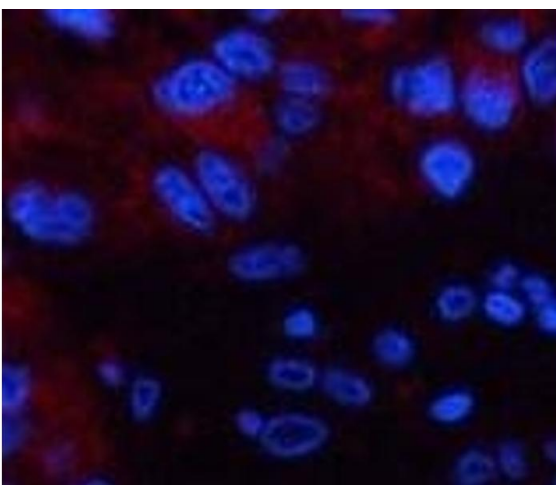
Preservative: Sodium azide

Precaution of Use: This product contains Sodium azide: a POISONOUS AND HAZARDOUS SUBSTANCE which should be handled by trained staff only.

Storage: -20 °C

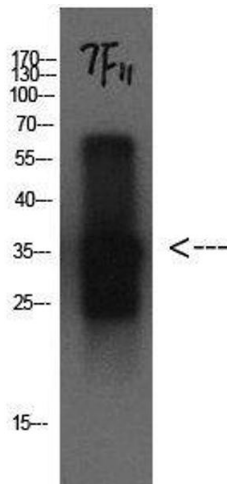
Storage Comment: Store at -20°C. Avoid freeze / thaw cycles.

## Images



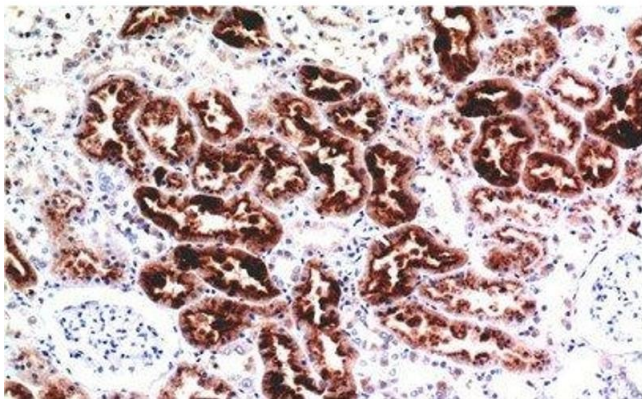
### Immunofluorescence

**Image 1.** Immunofluorescence analysis of Human liver cancer tissue using CST3 Monoclonal Antibody at dilution of 1:200.



### Western Blotting

**Image 2.** Western Blot analysis of Cystatin C protein using CST3 Monoclonal Antibody at dilution of 1:1000.



### Immunohistochemistry (Paraffin-embedded Sections)

**Image 3.** Immunohistochemistry of paraffin-embedded Human kidney tissue using CST3 Monoclonal Antibody at dilution of 1:200.