



[Go to Product page](#)

Datasheet for ABIN7250332  
**anti-Luciferase antibody**

2 Images

### Overview

Quantity:	200 µL
Target:	Luciferase
Reactivity:	Firefly
Host:	Mouse
Clonality:	Monoclonal
Conjugate:	This Luciferase antibody is un-conjugated
Application:	Western Blotting (WB), Immunofluorescence (IF)

### Product Details

Immunogen:	Recombinant Protein of Luciferase of Luciferase
Clone:	2C2
Isotype:	IgG
Characteristics:	Monoclonal Antibody
Purification:	Protein A purification

### Target Details

Target:	Luciferase
Abstract:	<a href="#">Luciferase Products</a>
Background:	Luciferase from the firefly has become one of the more widely used reporter proteins for the study of gene expression. Luciferase catalyzes a bioluminescent reaction which requires the

## Target Details

substrate luciferin as well as Mg<sup>2+</sup> and ATP. Mixing these reagents with the cell extract containing luciferase, results in a flash of light that decays rapidly. This light can be detected by a luminometer. The total light emission is proportional to the luciferase activity of the sample.

Molecular Weight: 60 kDa

UniProt: [P08659](#)

## Application Details

Application Notes: WB 1:1000-2000

Restrictions: For Research Use only

## Handling

Format: Liquid

Concentration: 1 mg/mL

Buffer: PBS with 0.02 % sodium azide, 0.5 % BSA and 50 % glycerol, pH 7.4

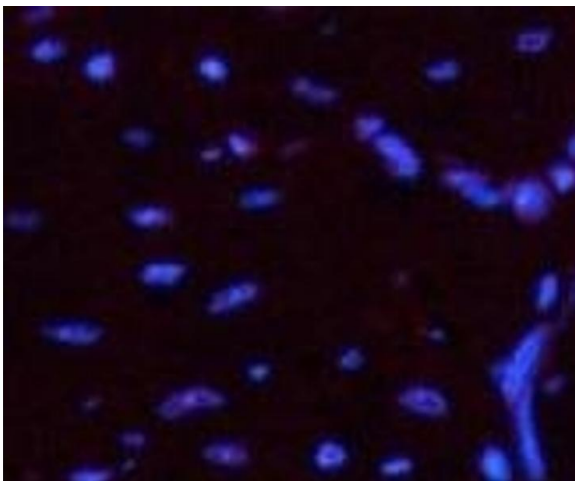
Preservative: Sodium azide

Precaution of Use: This product contains Sodium azide: a POISONOUS AND HAZARDOUS SUBSTANCE which should be handled by trained staff only.

Storage: -20 °C

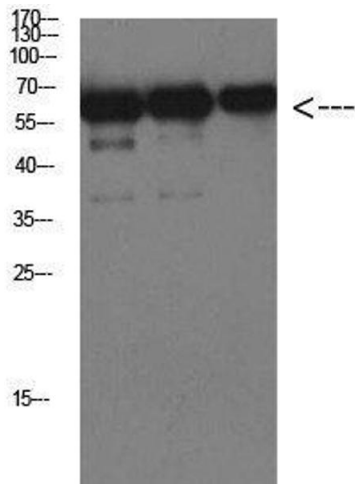
Storage Comment: Store at -20°C. Avoid freeze / thaw cycles.

## Images



### Immunofluorescence

**Image 1.** Immunofluorescence analysis of Mouse heart tissue using Luciferase Monoclonal Antibody at dilution of 1:200.



### Western Blotting

**Image 2.** Western Blot analysis of Luciferase protein using Luciferase Monoclonal Antibody at dilution of 1:1000.