

Datasheet for ABIN7250347

anti-Beclin 1 antibody

3 Images

[Go to Product page](#)

Overview

Quantity:	200 µL
Target:	Beclin 1 (BECN1)
Reactivity:	Human, Mouse, Rat
Host:	Mouse
Clonality:	Monoclonal
Conjugate:	This Beclin 1 antibody is un-conjugated
Application:	Western Blotting (WB), Immunohistochemistry (Paraffin-embedded Sections) (IHC (p))

Product Details

Immunogen:	Synthetic Peptide of Beclin-1
Clone:	3C6
Isotype:	IgG
Characteristics:	Monoclonal Antibody
Purification:	Protein A purification

Target Details

Target:	Beclin 1 (BECN1)
Alternative Name:	BECN1 (BECN1 Products)
Background:	Beclin-1 (BECN1), also known as ATG6 or VPS30, has a central role in autophagy, a process of programmed cell survival, which is increased during periods of cell stress and extinguished

Target Details

during the cell cycle. Beclin-1, may play a role in antiviral host defense. It protects against infection by a neurovirulent strain of Sindbis virus. Beclin-1 participates in the regulation of autophagy and has an important role in development, tumorigenesis, and neurodegeneration. A progressively reduced Beclin-1 expression is reported to correlate with the primary tumor growth of squamous cell carcinoma and adenocarcinoma of the lung. Caspase-mediated cleavage of Beclin 1 promotes crosstalk between apoptosis and autophagy.

Molecular Weight:	60 kDa
-------------------	--------

UniProt:	Q14457
----------	------------------------

Pathways:	Autophagy
-----------	---------------------------

Application Details

Application Notes:	WB 1:1000-2000, IHC 1:100-200
--------------------	-------------------------------

Restrictions:	For Research Use only
---------------	-----------------------

Handling

Format:	Liquid
---------	--------

Concentration:	1 mg/mL
----------------	---------

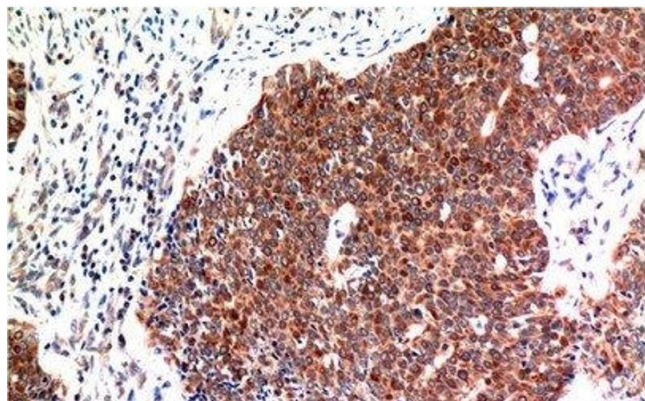
Buffer:	PBS with 0.02 % sodium azide, 0.5 % BSA and 50 % glycerol, pH 7.4
---------	---

Preservative:	Sodium azide
---------------	--------------

Precaution of Use:	This product contains Sodium azide: a POISONOUS AND HAZARDOUS SUBSTANCE which should be handled by trained staff only.
--------------------	--

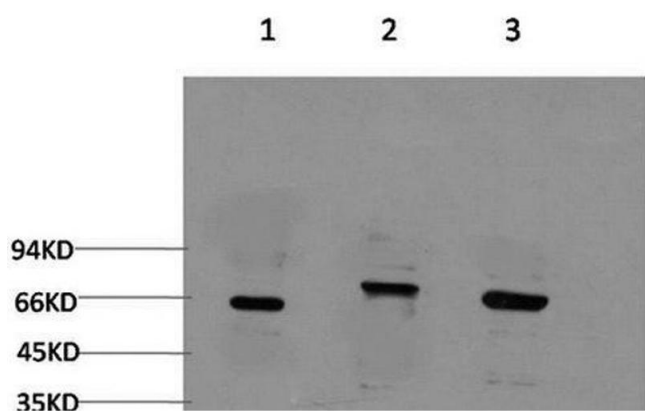
Storage:	-20 °C
----------	--------

Storage Comment:	Store at -20°C. Avoid freeze / thaw cycles.
------------------	---



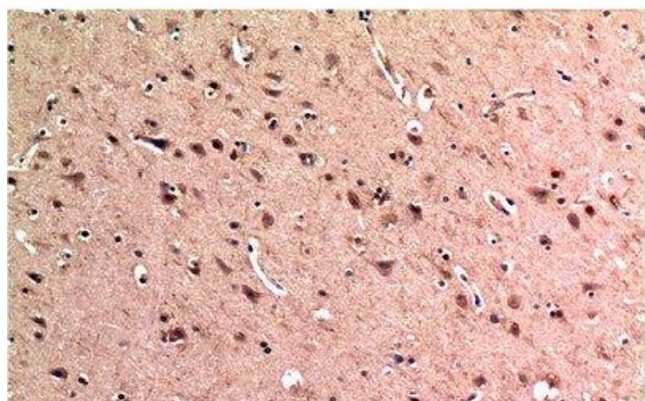
Immunohistochemistry (Paraffin-embedded Sections)

Image 1. Immunohistochemistry of paraffin-embedded Human breast carcinoma tissue using BECN1 Monoclonal Antibody at dilution of 1:200.



Western Blotting

Image 2. Western Blot analysis of 1) 293T, 2) C2C12, 3) Rat brain using BECN1 Monoclonal Antibody at dilution of 1:2000.



Immunohistochemistry (Paraffin-embedded Sections)

Image 3. Immunohistochemistry of paraffin-embedded Human brain tissue using BECN1 Monoclonal Antibody at dilution of 1:200.