

Datasheet for ABIN7250359

**anti-TTR antibody**

3 Images

[Go to Product page](#)

## Overview

Quantity:	200 µL
Target:	TTR
Reactivity:	Human
Host:	Mouse
Clonality:	Monoclonal
Conjugate:	This TTR antibody is un-conjugated
Application:	Western Blotting (WB), Immunohistochemistry (Paraffin-embedded Sections) (IHC (p))

## Product Details

Immunogen:	Recombinant Protein of TTR
Clone:	2A4
Isotype:	IgG
Characteristics:	Monoclonal Antibody
Purification:	Protein A purification

## Target Details

Target:	TTR
Alternative Name:	TTR ( <a href="#">TTR Products</a> )
Background:	This gene encodes transthyretin, one of the three prealbumins including alpha-1-antitrypsin, transthyretin and orosomucoid. Transthyretin is a carrier protein, it transports thyroid hormones

## Target Details

in the plasma and cerebrospinal fluid, and also transports retinol (vitamin A) in the plasma. The protein consists of a tetramer of identical subunits. More than 80 different mutations in this gene have been reported, most mutations are related to amyloid deposition, affecting predominantly peripheral nerve and/or the heart, and a small portion of the gene mutations is non-amyloidogenic. The diseases caused by mutations include amyloidotic polyneuropathy, euthyroid hyperthyroxinaemia, amyloidotic vitreous opacities, cardiomyopathy, oculoleptomeningeal amyloidosis, meningocerebrovascular amyloidosis, carpal tunnel syndrome, etc.

Molecular Weight: 16 kDa

UniProt: [P02766](#)

Pathways: [Hormone Transport](#)

## Application Details

Application Notes: WB 1:500-2000, IHC 1:50-300

Restrictions: For Research Use only

## Handling

Format: Liquid

Concentration: 1 mg/mL

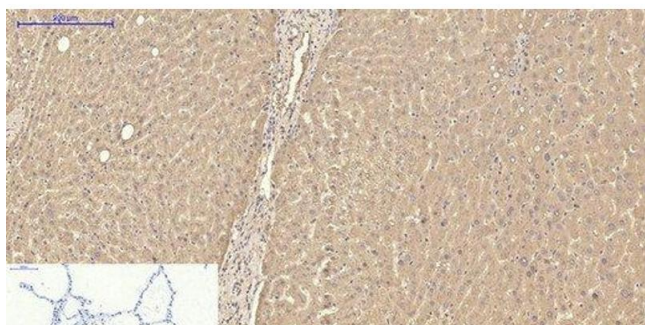
Buffer: PBS with 0.02 % sodium azide and 50 % glycerol pH 7.4.

Preservative: Sodium azide

Precaution of Use: This product contains Sodium azide: a POISONOUS AND HAZARDOUS SUBSTANCE which should be handled by trained staff only.

Storage: -20 °C

Storage Comment: Store at -20°C. Avoid freeze / thaw cycles.



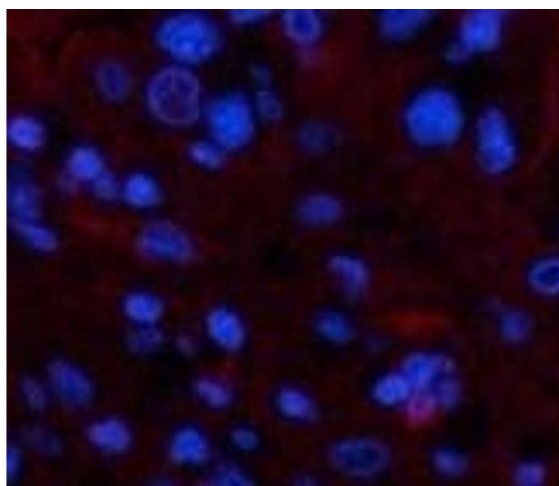
#### Immunohistochemistry (Paraffin-embedded Sections)

**Image 1.** Immunohistochemistry of paraffin-embedded Human lung tissue using TTR Monoclonal Antibody at dilution of 1:200.



#### Western Blotting

**Image 2.** Western Blot analysis of Human Serum using TTR Monoclonal Antibody at dilution of 1:2000.



#### Immunofluorescence

**Image 3.** Immunofluorescence analysis of Human liver cancer tissue using TTR Monoclonal Antibody at dilution of 1:200.