

Datasheet for ABIN7250365

anti-CBX5 antibody

3 Images



[Go to Product page](#)

Overview

Quantity:	200 µL
Target:	CBX5
Reactivity:	Human, Mouse, Rat
Host:	Mouse
Clonality:	Monoclonal
Conjugate:	This CBX5 antibody is un-conjugated
Application:	Western Blotting (WB), Immunohistochemistry (Paraffin-embedded Sections) (IHC (p))

Product Details

Immunogen:	Recombinant Protein of HP-1 alpha
Clone:	7B6
Isotype:	IgG
Characteristics:	Monoclonal Antibody
Purification:	Protein A purification

Target Details

Target:	CBX5
Alternative Name:	CBX5 (CBX5 Products)
Background:	This gene encodes a highly conserved nonhistone protein, which is a member of the heterochromatin protein family. The protein is enriched in the heterochromatin and associated

Target Details

with centromeres. The protein has a single N-terminal chromodomain which can bind to histone proteins via methylated lysine residues, and a C-terminal chromo shadow-domain (CSD) which is responsible for the homodimerization and interaction with a number of chromatin-associated nonhistone proteins. The encoded product is involved in the formation of functional kinetochore through interaction with essential kinetochore proteins. The gene has a pseudogene located on chromosome 3. Multiple alternatively spliced variants, encoding the same protein, have been identified.

Molecular Weight: 22 kDa

UniProt: [P45973](#)

Application Details

Application Notes: WB 1:500-2000, IHC 1:50-300

Restrictions: For Research Use only

Handling

Format: Liquid

Concentration: 1 mg/mL

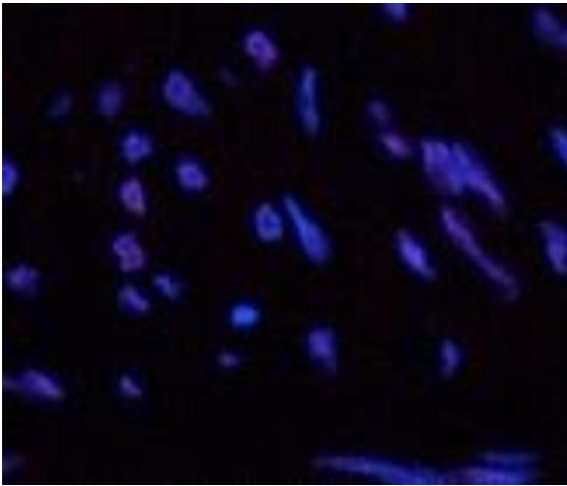
Buffer: PBS with 0.02 % sodium azide and 50 % glycerol pH 7.4.

Preservative: Sodium azide

Precaution of Use: This product contains Sodium azide: a POISONOUS AND HAZARDOUS SUBSTANCE which should be handled by trained staff only.

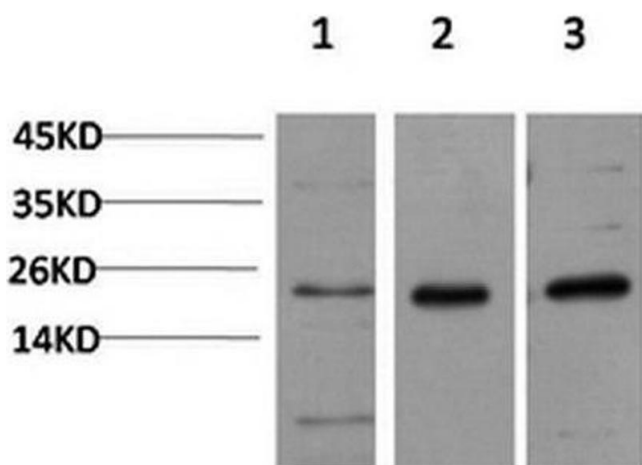
Storage: -20 °C

Storage Comment: Store at -20°C. Avoid freeze / thaw cycles.



Immunofluorescence

Image 1. Immunofluorescence analysis of Human uterus tissue using CBX5 Monoclonal Antibody at dilution of 1:200.



Western Blotting

Image 2. Western Blot analysis of 1) HeLa, 2)3T3, 3) PC-12 cells using CBX5 Monoclonal Antibody at dilution of 1:1000.



Immunohistochemistry (Paraffin-embedded Sections)

Image 3. Immunohistochemistry of paraffin-embedded Human uterus tissue using CBX5 Monoclonal Antibody at dilution of 1:200.