

Datasheet for ABIN7250383

anti-COL1A1 antibody**2** Images[Go to Product page](#)

Overview

Quantity:	200 µL
Target:	COL1A1
Reactivity:	Human, Rat, Mouse
Host:	Mouse
Clonality:	Monoclonal
Conjugate:	This COL1A1 antibody is un-conjugated
Application:	Immunohistochemistry (Paraffin-embedded Sections) (IHC (p))

Product Details

Immunogen:	Synthetic Peptide of Collagen I
Clone:	3C3
Isotype:	IgG
Characteristics:	Monoclonal Antibody
Purification:	Protein A purification

Target Details

Target:	COL1A1
Alternative Name:	COL1A1 (COL1A1 Products)
Background:	COL1A1 (Collagen Type I Alpha 1 Chain) is a Protein Coding gene. Diseases associated with COL1A1 include Caffey Disease and Osteogenesis Imperfecta, Type I. Among its related

Target Details

pathways are Collagen chain trimerization and Transcription_Role of VDR in regulation of genes involved in osteoporosis. GO annotations related to this gene include identical protein binding and platelet-derived growth factor binding. An important paralog of this gene is COL2A1. This gene encodes the pro-alpha1 chains of type I collagen whose triple helix comprises two alpha1 chains and one alpha2 chain. Type I is a fibril-forming collagen found in most connective tissues and is abundant in bone, cornea, dermis and tendon. Mutations in this gene are associated with osteogenesis imperfecta types I-IV, Ehlers-Danlos syndrome type VIIA, Ehlers-Danlos syndrome Classical type, Caffey Disease and idiopathic osteoporosis. Reciprocal translocations between chromosomes 17 and 22, where this gene and the gene for platelet-derived growth factor beta are located, are associated with a particular type of skin tumor called dermatofibrosarcoma protuberans, resulting from unregulated expression of the growth factor. Two transcripts, resulting from the use of alternate polyadenylation signals, have been identified for this gene.

UniProt: [P02452](#)

Pathways: [Sensory Perception of Sound](#), [Autophagy](#), [Growth Factor Binding](#)

Application Details

Application Notes: IHC 1:50-300

Restrictions: For Research Use only

Handling

Format: Liquid

Concentration: 1 mg/mL

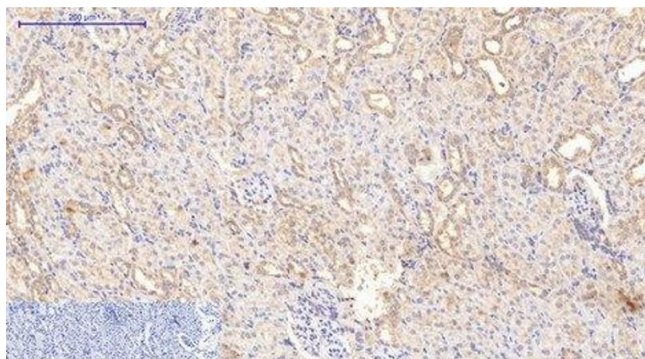
Buffer: PBS with 0.02 % sodium azide and 50 % glycerol pH 7.4.

Preservative: Sodium azide

Precaution of Use: This product contains Sodium azide: a POISONOUS AND HAZARDOUS SUBSTANCE which should be handled by trained staff only.

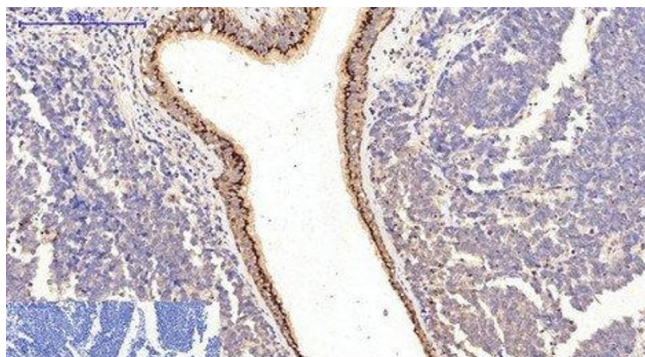
Storage: -20 °C

Storage Comment: Store at -20°C. Avoid freeze / thaw cycles.



Immunohistochemistry (Paraffin-embedded Sections)

Image 1. Immunohistochemistry of paraffin-embedded Rat kidney tissue using COL1A1 Monoclonal Antibody at dilution of 1:200.



Immunohistochemistry (Paraffin-embedded Sections)

Image 2. Immunohistochemistry of paraffin-embedded Human lung cancer tissue using COL1A1 Monoclonal Antibody at dilution of 1:200.