

Datasheet for ABIN7250467
anti-Galectin 3 antibody



[Go to Product page](#)

3 Images

Overview

Quantity:	200 µL
Target:	Galectin 3 (LGALS3)
Reactivity:	Human, Mouse
Host:	Mouse
Clonality:	Monoclonal
Conjugate:	This Galectin 3 antibody is un-conjugated
Application:	Western Blotting (WB), ELISA, Immunohistochemistry (Paraffin-embedded Sections) (IHC (p))

Product Details

Immunogen:	Protein
Isotype:	IgG
Characteristics:	Monoclonal Antibody
Purification:	Protein A purification

Target Details

Target:	Galectin 3 (LGALS3)
Alternative Name:	Galectin 3 (LGALS3 Products)
Target Type:	Chemical
Background:	Galactose-specific lectin which binds IgE. May mediate with the alpha-3, beta-1 integrin the stimulation by CSPG4 of endothelial cells migration. Together with DMBT1, required for

Target Details

terminal differentiation of columnar epithelial cells during early embryogenesis.

Molecular Weight: 26 kDa

UniProt: [P17931](#)

Pathways: [RTK Signaling](#)

Application Details

Application Notes: WB 1:2000-5000, IHC 1:100-200

Restrictions: For Research Use only

Handling

Format: Liquid

Concentration: 1 mg/mL

Buffer: PBS with 0.02 % sodium azide, 0.5 % BSA and 50 % glycerol, pH 7.4

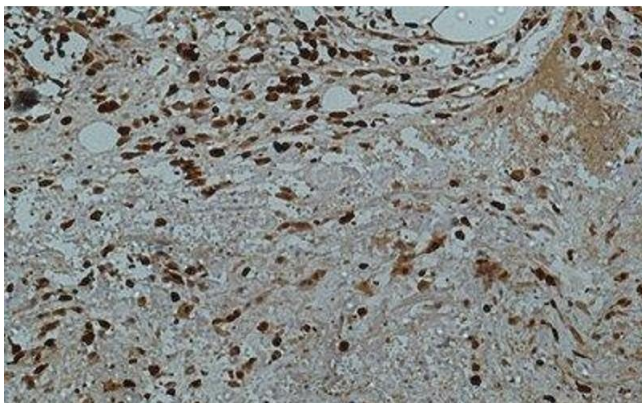
Preservative: Sodium azide

Precaution of Use: This product contains Sodium azide: a POISONOUS AND HAZARDOUS SUBSTANCE which should be handled by trained staff only.

Storage: -20 °C

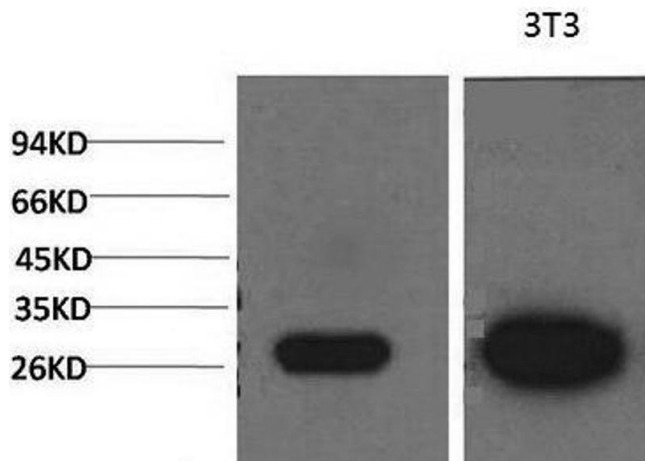
Storage Comment: Store at -20°C. Avoid freeze / thaw cycles.

Images



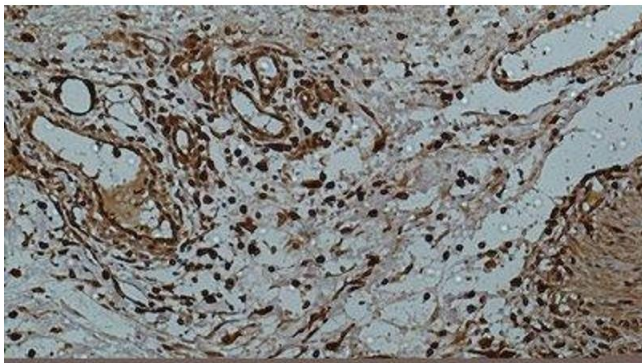
Immunohistochemistry (Paraffin-embedded Sections)

Image 1. Immunohistochemistry of paraffin-embedded Human colon tissue using Galectin 3 Monoclonal Antibody at dilution of 1:50.



Western Blotting

Image 2. Western Blot analysis of 1) MCF-7, 2) 3T3 cells using Galectin 3 Monoclonal Antibody at dilution of 1:2000.



Immunohistochemistry (Paraffin-embedded Sections)

Image 3. Immunohistochemistry of paraffin-embedded Human colon using Galectin 3 Monoclonal Antibody at dilution of 1:50.