



[Go to Product page](#)

Datasheet for ABIN7250713

anti-beta Catenin antibody (pSer37)

3 Images

Overview

Quantity:	200 µL
Target:	beta Catenin (CATNB)
Binding Specificity:	pSer37
Reactivity:	Human, Mouse, Rat
Host:	Rabbit
Clonality:	Polyclonal
Conjugate:	This beta Catenin antibody is un-conjugated
Application:	Western Blotting (WB), Immunofluorescence (IF), ELISA, Immunohistochemistry (Paraffin-embedded Sections) (IHC (p))

Product Details

Immunogen:	Synthesized peptide derived from human Catenin-beta around the phosphorylation site of Ser37
Isotype:	IgG
Characteristics:	Phosphorylated antibody
Purification:	Affinity purification

Target Details

Target:	beta Catenin (CATNB)
Alternative Name:	Catenin beta (CATNB Products)

Target Details

Background: Key downstream component of the canonical Wnt signaling pathway. In the absence of Wnt, forms a complex with AXIN1, AXIN2, APC, CSNK1A1 and GSK3B that promotes phosphorylation on N-terminal Ser and Thr residues and ubiquitination of CTNNB1 via BTRC and its subsequent degradation by the proteasome. In the presence of Wnt ligand, CTNNB1 is not ubiquitinated and accumulates in the nucleus, where it acts as a coactivator for transcription factors of the TCF/LEF family, leading to activate Wnt responsive genes. Involved in the regulation of cell adhesion. The majority of beta-catenin is localized to the cell membrane and is part of E-cadherin/catenin adhesion complexes which are proposed to couple cadherins to the actin cytoskeleton.

Molecular Weight: Observed_MW: 85 kDa
Calculated_MW: 85 kDa

UniProt: [P35222](#)

Pathways: [Peptide Hormone Metabolism](#)

Application Details

Application Notes: WB 1:500-1:2000, IHC 1:100-1:300, IF 1:200-1:1000, ELISA 1:40000

Restrictions: For Research Use only

Handling

Format: Liquid

Concentration: 1 mg/mL

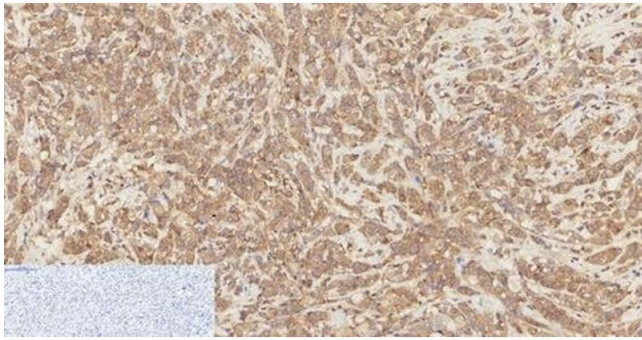
Buffer: PBS with 0.02 % sodium azide, 0.5 % BSA and 50 % glycerol, pH 7.4

Preservative: Sodium azide

Precaution of Use: This product contains Sodium azide: a POISONOUS AND HAZARDOUS SUBSTANCE which should be handled by trained staff only.

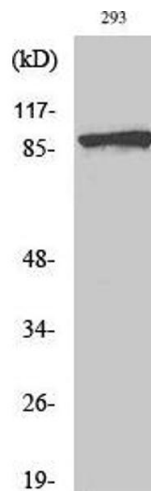
Storage: -20 °C

Storage Comment: Store at -20°C. Avoid freeze / thaw cycles.



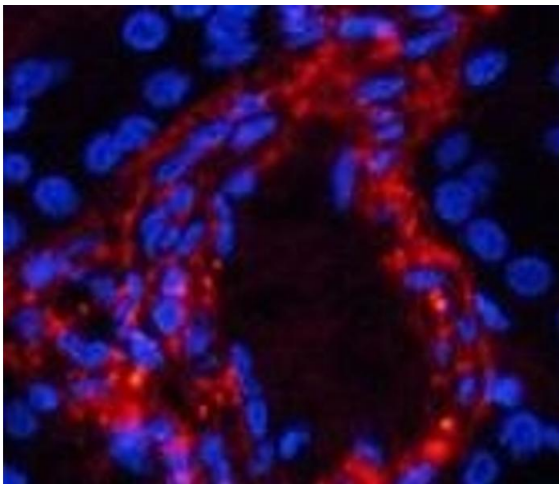
Immunohistochemistry (Paraffin-embedded Sections)

Image 1. Immunohistochemistry of paraffin-embedded Human breast cancer tissue using Phospho-Catenin beta (Ser37) Polyclonal Antibody at dilution of 1:200



Western Blotting

Image 2. Western Blot analysis of 293T cells using Phospho-Catenin beta (Ser37) Polyclonal Antibody at dilution of 1:2000



Immunofluorescence

Image 3. Immunofluorescence analysis of Human kidney tissue using Phospho-Catenin beta (Ser37) Polyclonal Antibody at dilution of 1:200