

Datasheet for ABIN7250779
anti-Smad2/3 antibody (pThr8)[Go to Product page](#)

1 Image

Overview

Quantity:	200 µL
Target:	Smad2/3 (SMAD2/3)
Binding Specificity:	pThr8
Reactivity:	Human, Rat, Mouse
Host:	Rabbit
Clonality:	Polyclonal
Conjugate:	This Smad2/3 antibody is un-conjugated
Application:	Western Blotting (WB), ELISA

Product Details

Immunogen:	Synthesized peptide derived from human Smad2/3 around the phosphorylation site of Thr8
Isotype:	IgG
Characteristics:	Phosphorylated antibody
Purification:	Affinity purification

Target Details

Target:	Smad2/3 (SMAD2/3)
Alternative Name:	SMAD2/3 (SMAD2/3 Products)
Background:	SMAD is a family of proteins similar to the gene products of the Drosophila gene 'mothers against decapentaplegic' (Mad) and the C. elegans gene Sma. SMAD proteins are signal

Target Details

transducers and transcriptional modulators that mediate multiple signaling pathways. They mediate the signal of the transforming growth factor (TGF)-beta, and thus regulate multiple cellular processes, such as cell proliferation, apoptosis, and differentiation.

Molecular Weight: Observed_MW: 48 kDa
Calculated_MW: 48 kDa

UniProt: [Q15796](#), [P84022](#)

Application Details

Application Notes: WB 1:500-1:2000, ELISA 1:10000

Restrictions: For Research Use only

Handling

Format: Liquid

Concentration: 1 mg/mL

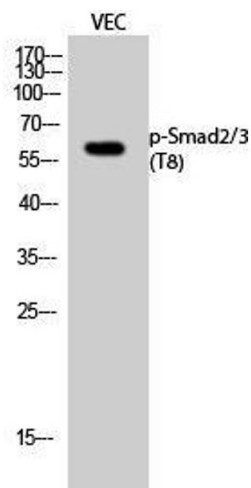
Buffer: PBS with 0.02 % sodium azide, 0.5 % BSA and 50 % glycerol, pH 7.4

Preservative: Sodium azide

Precaution of Use: This product contains Sodium azide: a POISONOUS AND HAZARDOUS SUBSTANCE which should be handled by trained staff only.

Storage: -20 °C

Storage Comment: Store at -20°C. Avoid freeze / thaw cycles.



Western Blotting

Image 1. Western Blot analysis of VEC cells with Phospho-Smad2/3 (Thr8) Polyclonal Antibody