

Datasheet for ABIN7250791  
**anti-FGFR4 antibody (pTyr642)**



[Go to Product page](#)

1 Image

## Overview

Quantity:	200 µL
Target:	FGFR4
Binding Specificity:	pTyr642
Reactivity:	Human, Rat, Mouse
Host:	Rabbit
Clonality:	Polyclonal
Conjugate:	This FGFR4 antibody is un-conjugated
Application:	Western Blotting (WB), ELISA

## Product Details

Immunogen:	Synthesized peptide derived from human FGFR-4 around the phosphorylation site of Tyr642
Isotype:	IgG
Characteristics:	Phosphorylated antibody
Purification:	Affinity purification

## Target Details

Target:	FGFR4
Alternative Name:	FGFR4 ( <a href="#">FGFR4 Products</a> )
Background:	The protein encoded by this gene is a member of the fibroblast growth factor receptor family, where amino acid sequence is highly conserved between members and throughout evolution.

## Target Details

FGFR family members differ from one another in their ligand affinities and tissue distribution. A full-length representative protein would consist of an extracellular region, composed of three immunoglobulin-like domains, a single hydrophobic membrane-spanning segment and a cytoplasmic tyrosine kinase domain. The extracellular portion of the protein interacts with fibroblast growth factors, setting in motion a cascade of downstream signals, ultimately influencing mitogenesis and differentiation. FGFR4 (Fibroblast Growth Factor Receptor 4) is a Protein Coding gene. Diseases associated with FGFR4 include Prostate Cancer and Neuroma. Among its related pathways are GPCR Pathway and RET signaling. GO annotations related to this gene include transferase activity, transferring phosphorus-containing groups and protein tyrosine kinase activity. An important paralog of this gene is FGFR3.

Molecular Weight: Observed\_MW: 90 kDa  
Calculated\_MW: 88 kDa

UniProt: [P22455](#)

Pathways: [RTK Signaling](#), [Fc-epsilon Receptor Signaling Pathway](#), [EGFR Signaling Pathway](#), [Neurotrophin Signaling Pathway](#), [Carbohydrate Homeostasis](#), [Growth Factor Binding](#)

## Application Details

Application Notes: WB 1:500-1:2000, ELISA 1:10000

Restrictions: For Research Use only

## Handling

Format: Liquid

Concentration: 1 mg/mL

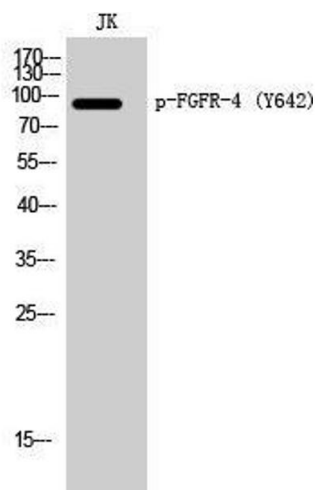
Buffer: PBS with 0.02 % sodium azide, 0.5 % BSA and 50 % glycerol, pH 7.4

Preservative: Sodium azide

Precaution of Use: This product contains Sodium azide: a POISONOUS AND HAZARDOUS SUBSTANCE which should be handled by trained staff only.

Storage: -20 °C

Storage Comment: Store at -20°C. Avoid freeze / thaw cycles.



Western Blotting

**Image 1.** Western Blot analysis of Jurkat cells with Phospho-FGFR4 (Tyr642) Polyclonal Antibody