



[Go to Product page](#)

Datasheet for ABIN7250797
anti-EEF2K antibody (pSer366)

1 Image

Overview

Quantity:	200 µL
Target:	EEF2K
Binding Specificity:	pSer366
Reactivity:	Human, Rat
Host:	Rabbit
Clonality:	Polyclonal
Conjugate:	This EEF2K antibody is un-conjugated
Application:	Western Blotting (WB), ELISA, Immunohistochemistry (Paraffin-embedded Sections) (IHC (p))

Product Details

Immunogen:	Synthesized peptide derived from human eEF2K around the phosphorylation site of Ser366
Isotype:	IgG
Characteristics:	Phosphorylated antibody
Purification:	Affinity purification

Target Details

Target:	EEF2K
Alternative Name:	EEF2K (EEF2K Products)
Background:	This gene encodes a highly conserved protein kinase in the calmodulin-mediated signaling pathway that links activation of cell surface receptors to cell division. This kinase is involved in

Target Details

the regulation of protein synthesis. It phosphorylates eukaryotic elongation factor 2 (EEF2) and thus inhibits the EEF2 function. The activity of this kinase is increased in many cancers and may be a valid target for anti-cancer treatment.

Molecular Weight: Observed_MW: 105 kDa
Calculated_MW: 82 kDa

UniProt: [O00418](#)

Pathways: [AMPK Signaling](#)

Application Details

Application Notes: WB 1:500-1:2000, IHC 1:100-1:300, ELISA 1:40000

Restrictions: For Research Use only

Handling

Format: Liquid

Concentration: 1 mg/mL

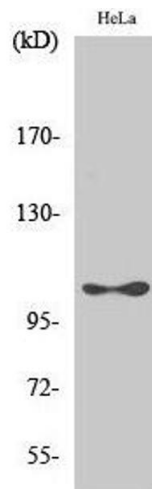
Buffer: PBS with 0.02 % sodium azide, 0.5 % BSA and 50 % glycerol, pH 7.4

Preservative: Sodium azide

Precaution of Use: This product contains Sodium azide: a POISONOUS AND HAZARDOUS SUBSTANCE which should be handled by trained staff only.

Storage: -20 °C

Storage Comment: Store at -20°C. Avoid freeze / thaw cycles.



Western Blotting

Image 1. Western Blot analysis of HeLa cells with Phospho-eEF2K (Ser366) Polyclonal Antibody at dilution of 1:1000