



Datasheet for ABIN7250827  
**anti-His Tag antibody**



[Go to Product page](#)

2 Images

Overview

Quantity:	200 µL
Target:	His Tag
Reactivity:	Please inquire
Host:	Mouse
Clonality:	Monoclonal
Conjugate:	This His Tag antibody is un-conjugated
Application:	Western Blotting (WB), Immunoprecipitation (IP), Immunofluorescence (IF)

Product Details

Immunogen:	Synthetic Peptide
Clone:	5I8
Isotype:	IgG
Characteristics:	Tag Antibody
Purification:	Protein A purification

Target Details

Target:	His Tag
Alternative Name:	His-Tag ( <a href="#">His Tag Products</a> )
Target Type:	Tag
Background:	Protein tags are protein or peptide sequences located either on the C- or N- terminal of the

## Target Details

---

target protein, which facilitates one or several of the following characteristics: solubility, detection, purification, localization and expression. His tag is often used for affinity purification and binding assays. Expressed His-tagged proteins can be purified and detected easily because the string of histidine residues binds to several types of immobilized metal ions, including nickel, cobalt and copper, under specific buffer conditions. The His tag antibody is a useful tool for monitoring of the His-tagged proteins, and recognizes His-tags placed at N-terminal, C-terminal, and internal regions of fusion proteins expressed in bacteria, insect, and mammalian cells.

## Application Details

---

Application Notes: WB 1:5000-1:10000, IF 1:500-1:2000, IP 1:100-1:300

Restrictions: For Research Use only

## Handling

---

Format: Liquid

Concentration: 1 mg/mL

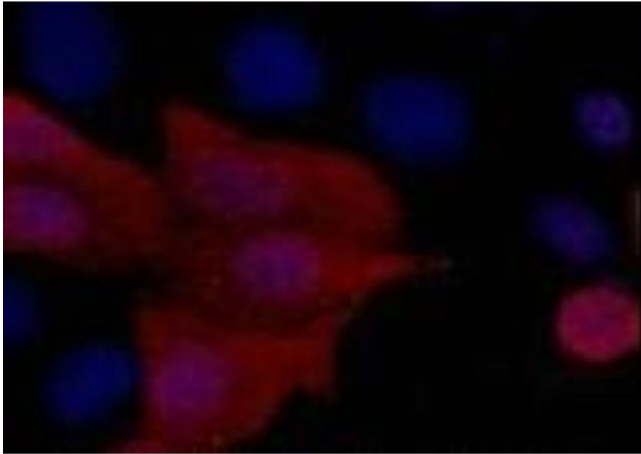
Buffer: PBS with 0.02 % sodium azide and 50 % glycerol pH 7.4.

Preservative: Sodium azide

Precaution of Use: This product contains Sodium azide: a POISONOUS AND HAZARDOUS SUBSTANCE which should be handled by trained staff only.

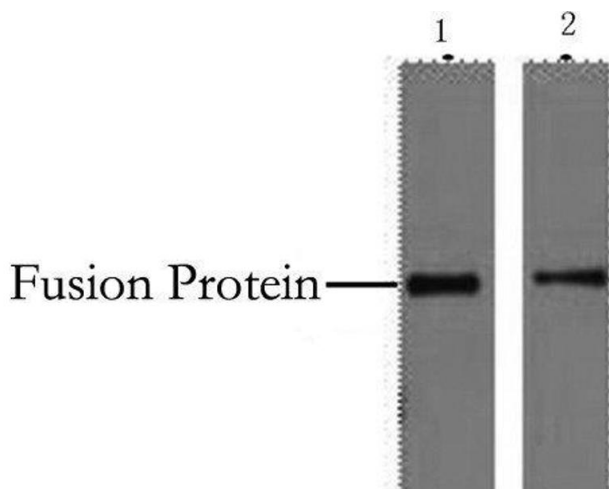
Storage: -20 °C

Storage Comment: Store at -20°C. Avoid freeze / thaw cycles.



### Immunofluorescence

**Image 1.** Immunofluorescence analysis of 293 cells transfected with a His tag protein tissue using His-Tag Monoclonal Antibody at dilution of 1:1000.



### Western Blotting

**Image 2.** Western Blot analysis of 2 µg His fusion protein using His-Tag Monoclonal Antibody at dilution of 1) 1:5000 2) 1:10000.