



[Go to Product page](#)

Datasheet for ABIN7250830  
**anti-V5 Epitope Tag antibody**

2 Images

### Overview

Quantity:	200 µL
Target:	V5 Epitope Tag
Reactivity:	Please inquire
Host:	Mouse
Clonality:	Monoclonal
Conjugate:	This V5 Epitope Tag antibody is un-conjugated
Application:	Western Blotting (WB), Immunoprecipitation (IP), Immunofluorescence (IF)

### Product Details

Immunogen:	Synthetic Peptide
Clone:	8G5
Isotype:	IgG
Characteristics:	Tag Antibody
Purification:	Protein A purification

### Target Details

Target:	V5 Epitope Tag
Alternative Name:	V5-Tag ( <a href="#">V5 Epitope Tag Products</a> )
Target Type:	Tag
Background:	The antibody is developed against a synthetic 14 aa peptide (GKPIPPLLGLDST), the V5 tag,

## Target Details

---

which presents in many vectors.

## Application Details

---

Application Notes: WB 1:5000-1:10000, IF 1:500-1:2000, IP 1:100-1:300

Restrictions: For Research Use only

## Handling

---

Format: Liquid

Concentration: 1 mg/mL

Buffer: PBS with 0.02 % sodium azide and 50 % glycerol pH 7.4.

Preservative: Sodium azide

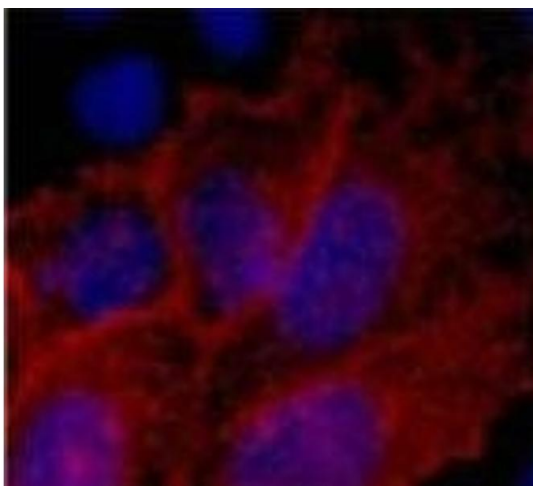
Precaution of Use: This product contains Sodium azide: a POISONOUS AND HAZARDOUS SUBSTANCE which should be handled by trained staff only.

Storage: -20 °C

Storage Comment: Store at -20°C. Avoid freeze / thaw cycles.

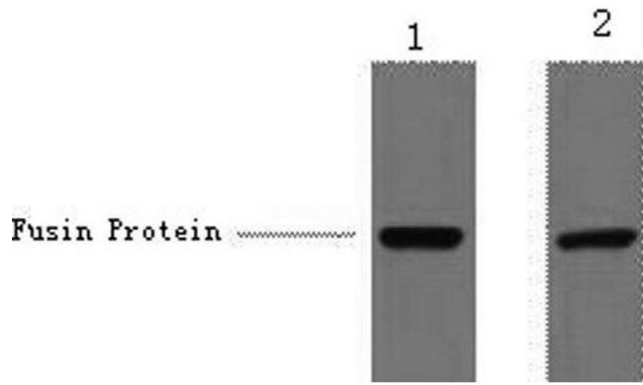
## Images

---



### Immunofluorescence

**Image 1.** Immunofluorescence analysis of 293 cells transfected with a V5 tag protein tissue using V5-Tag Monoclonal Antibody at dilution of 1:2000.



### Western Blotting

**Image 2.** Western Blot analysis of 1 µg V5 fusion protein using V5-Tag Monoclonal Antibody at dilution of 1) 1:5000  
2) 1:10000.