

Datasheet for ABIN7250854

anti-TUBB antibody

3 Images

[Go to Product page](#)

Overview

Quantity:	200 µL
Target:	TUBB
Reactivity:	Human, Mouse, Rat, Rabbit, Chicken, Monkey, Dog, Hamster, Saccharomyces cerevisiae, Sheep, Insect
Host:	Mouse
Clonality:	Monoclonal
Conjugate:	This TUBB antibody is un-conjugated
Application:	Western Blotting (WB), Immunofluorescence (IF), Immunohistochemistry (Paraffin-embedded Sections) (IHC (p))

Product Details

Immunogen:	Synthetic Peptide
Clone:	8B2
Isotype:	IgG
Characteristics:	Control Antibody
Purification:	Protein A purification

Target Details

Target:	TUBB
Alternative Name:	beta Tubulin (TUBB Products)

Target Details

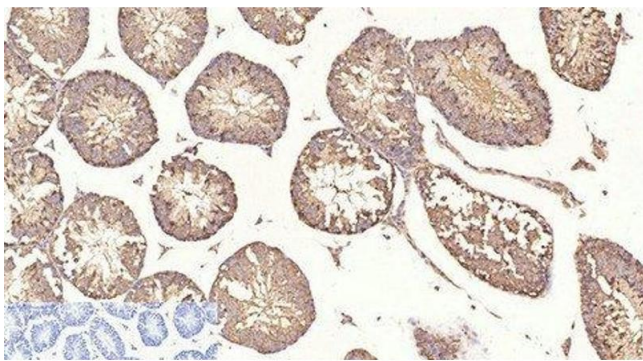
Background:	There are five tubulins in human cells: alpha, beta, gamma, delta, and epsilon. Tubulins are conserved across species. They form heterodimers, which multimerize to form a microtubule filament. An alpha and beta tubulin heterodimer is the basic structural unit of microtubules. The heterodimer does not come apart, once formed. The alpha and beta tubulins, which are each about 55 kDa MW, are homologous but not identical. Alpha, beta, and gamma tubulins have all been used as loading controls. Tubulin expression may vary according to resistance to antimicrobial and antimitotic drugs.
Molecular Weight:	Observed_MW: 55 kDa Calculated_MW: 50 kDa
UniProt:	Q13509
Pathways:	Microtubule Dynamics, M Phase

Application Details

Application Notes:	WB 1:5000-1:10000, IHC 1:100-1:300, IF 1:100-1:300
Restrictions:	For Research Use only

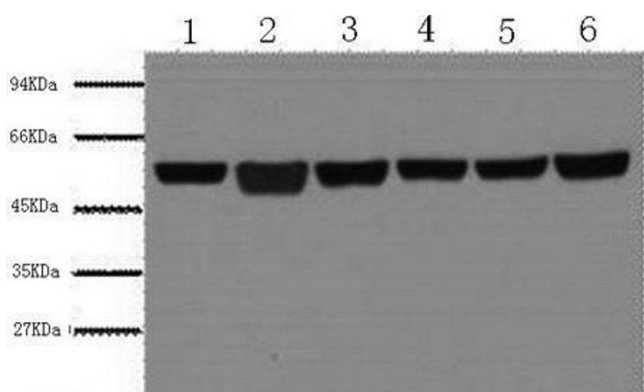
Handling

Format:	Liquid
Concentration:	1 mg/mL
Buffer:	PBS with 0.02 % sodium azide and 50 % glycerol pH 7.4.
Preservative:	Sodium azide
Precaution of Use:	This product contains Sodium azide: a POISONOUS AND HAZARDOUS SUBSTANCE which should be handled by trained staff only.
Storage:	-20 °C
Storage Comment:	Store at -20°C. Avoid freeze / thaw cycles.



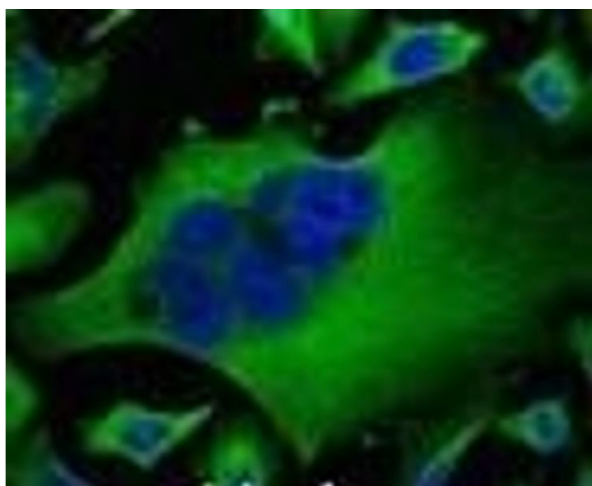
Immunohistochemistry (Paraffin-embedded Sections)

Image 1. Immunohistochemistry of paraffin-embedded Mouse testis tissue using beta Tubulin Monoclonal Antibody at dilution of 1:200.



Western Blotting

Image 2. Western Blot analysis of A549, Rat brain, Mouse brain, Chicken lung, Rabbit testis, Sheep muscle using beta Tubulin Monoclonal Antibody at dilution of 1:5000.



Immunofluorescence

Image 3. Immunofluorescence analysis of Hela tissue using beta Tubulin Monoclonal Antibody at dilution of 1:100.