



[Go to Product page](#)

Datasheet for ABIN7250857
anti-alpha Tubulin antibody

3 Images

Overview

Quantity:	200 µL
Target:	alpha Tubulin (TUBA1)
Reactivity:	Human, Mouse, Rat
Host:	Mouse
Clonality:	Monoclonal
Conjugate:	This alpha Tubulin antibody is un-conjugated
Application:	Western Blotting (WB), Immunohistochemistry (Paraffin-embedded Sections) (IHC (p)), Immunofluorescence (IF), Immunoprecipitation (IP)

Product Details

Immunogen:	Recombinant Protein
Clone:	5M5
Isotype:	IgG
Characteristics:	Control Antibody
Purification:	Protein A purification

Target Details

Target:	alpha Tubulin (TUBA1)
Alternative Name:	alpha Tubulin (TUBA1 Products)
Background:	There are five tubulins in human cells: alpha, beta, gamma, delta, and epsilon. Tubulins are

Target Details

conserved across species. They form heterodimers, which multimerize to form a microtubule filament. An alpha and beta tubulin heterodimer is the basic structural unit of microtubules. The heterodimer does not come apart, once formed. The alpha and beta tubulins, which are each about 55 kDa MW, are homologous but not identical. Alpha, beta, and gamma tubulins have all been used as loading controls. Tubulin expression may vary according to resistance to antimicrobial and antimitotic drugs.

Molecular Weight:	Observed_MW: 52 kDa Calculated_MW: 50 kDa
-------------------	--

UniProt:	Q71U36 , P68363
----------	---

Pathways:	Microtubule Dynamics
-----------	--------------------------------------

Application Details

Application Notes:	WB 1:500-10000, IHC 1:50-300, IF 1:50-1:200, IP 1:100-1:300
--------------------	---

Restrictions:	For Research Use only
---------------	-----------------------

Handling

Format:	Liquid
---------	--------

Concentration:	1 mg/mL
----------------	---------

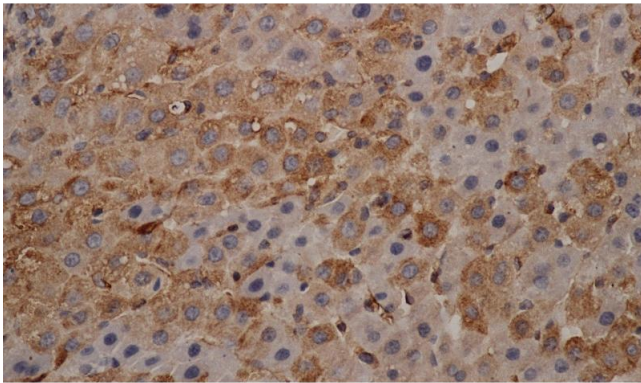
Buffer:	PBS with 0.02 % sodium azide and 50 % glycerol pH 7.4.
---------	--

Preservative:	Sodium azide
---------------	--------------

Precaution of Use:	This product contains Sodium azide: a POISONOUS AND HAZARDOUS SUBSTANCE which should be handled by trained staff only.
--------------------	--

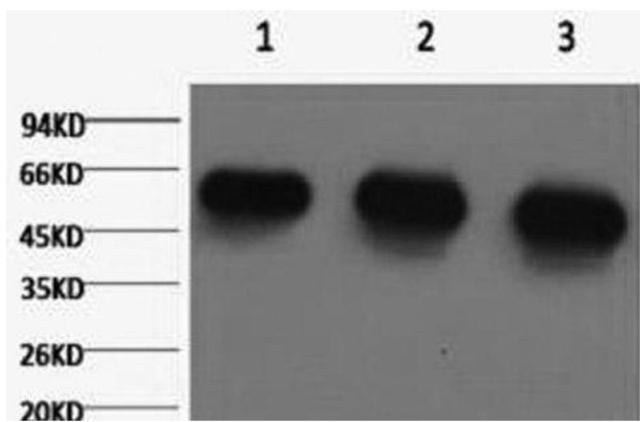
Storage:	-20 °C
----------	--------

Storage Comment:	Store at -20°C. Avoid freeze / thaw cycles.
------------------	---



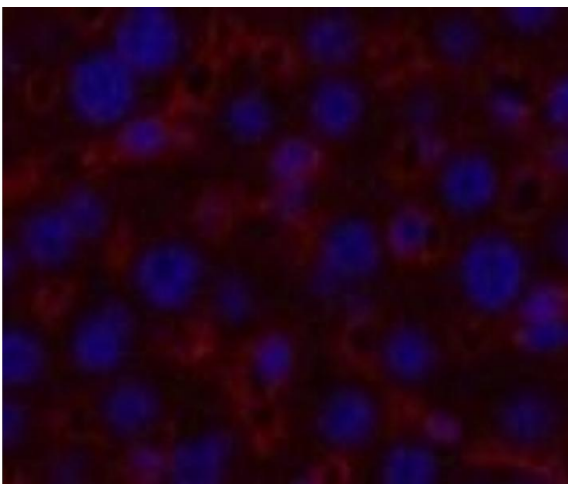
Immunohistochemistry (Paraffin-embedded Sections)

Image 1. Immunohistochemistry of paraffin-embedded mouse liver using alpha Tubulin Monoclonal Antibody at dilution of 1:200



Western Blotting

Image 2. Western Blot analysis of 1) HeLa, 2) Rat brain, 3) Mouse brain using alpha Tubulin Monoclonal Antibody at dilution of 1:5000.



Immunofluorescence

Image 3. Immunofluorescence analysis of Mouse liver tissue using alpha Tubulin Monoclonal Antibody at dilution of 1:200.