



[Go to Product page](#)

Datasheet for ABIN7250950

anti-TUBB antibody

3 Images

Overview

Quantity:	200 µL
Target:	TUBB
Reactivity:	Human, Mouse, Rat, Rabbit, Chicken, Monkey, Dog, Hamster
Host:	Mouse
Clonality:	Monoclonal
Conjugate:	This TUBB antibody is un-conjugated
Application:	Western Blotting (WB), Immunohistochemistry (Paraffin-embedded Sections) (IHC (p)), Immunoprecipitation (IP)

Product Details

Immunogen:	Synthetic Peptide
Clone:	5L3
Isotype:	IgG
Characteristics:	Control Antibody
Purification:	Protein A purification

Target Details

Target:	TUBB
Alternative Name:	beta Tubulin (TUBB Products)
Background:	TUBB3, the class III β tubulin or Tuj1, is selectively expressed in testis and neurons of the central

Target Details

and peripheral nervous system. It has been widely used as a marker for neurons. Aberrant expression of TUBB3 has also been found in various tumors of non-neural origin and can be used as a biomarker for cancer aggressiveness and a marker for the tendency to respond poorly to chemotherapy. This antibody is specific to TUBB3 but not cross-react with other tubulin isoforms.

Molecular Weight: Observed_MW: 55 kDa
Calculated_MW: 50 kDa

UniProt: [Q13509](#)

Pathways: [Microtubule Dynamics, M Phase](#)

Application Details

Application Notes: WB 1:500-10000, IHC 1:200, IP 1:200

Restrictions: For Research Use only

Handling

Format: Liquid

Concentration: 1 mg/mL

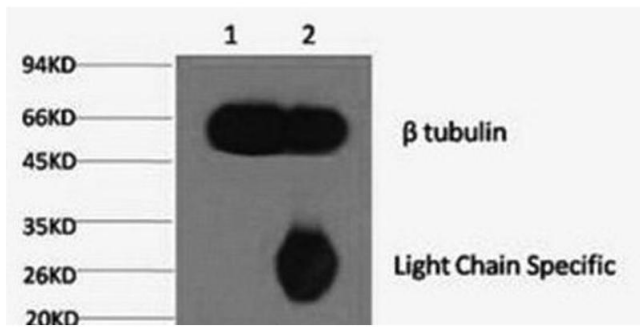
Buffer: PBS with 0.02 % sodium azide and 50 % glycerol pH 7.4.

Preservative: Sodium azide

Precaution of Use: This product contains Sodium azide: a POISONOUS AND HAZARDOUS SUBSTANCE which should be handled by trained staff only.

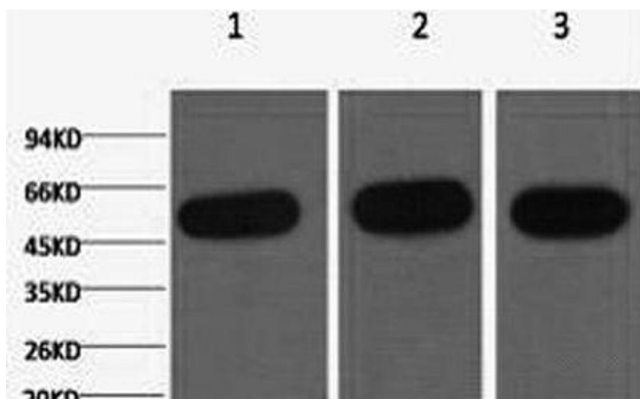
Storage: -20 °C

Storage Comment: Store at -20°C. Avoid freeze / thaw cycles.



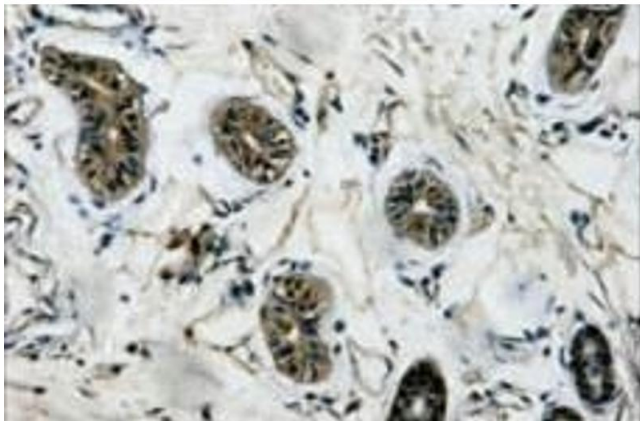
Western Blotting

Image 1. 1) Input: Mouse brain tissue, 2) IP product: IP at dilution of 1:200



Western Blotting

Image 2. Western Blot analysis of 1) HeLa, 2) Mouse kidney, 3) Rat heart using beta Tubulin Monoclonal Antibody at dilution of 1:5000.



Immunohistochemistry (Paraffin-embedded Sections)

Image 3. Immunohistochemistry of paraffin-embedded Human colon tissue using beta Tubulin Monoclonal Antibody at dilution of 1:200.