

Datasheet for ABIN7250965
anti-Phosphoserine antibody



[Go to Product page](#)

3 Images

Overview

Quantity:	200 µL
Target:	Phosphoserine
Reactivity:	Various Species
Host:	Mouse
Clonality:	Monoclonal
Conjugate:	This Phosphoserine antibody is un-conjugated
Application:	Western Blotting (WB), Immunohistochemistry (Paraffin-embedded Sections) (IHC (p))

Product Details

Immunogen:	Purified Protein
Clone:	7A3
Isotype:	IgG
Characteristics:	Phosphorylated antibody
Purification:	Protein A purification

Target Details

Target:	Phosphoserine
Abstract:	Phosphoserine Products
Target Type:	Amino Acid

Application Details

Application Notes: WB 1:500-1:2000, IHC 1:100-1:300 ELISA 1:40000

Restrictions: For Research Use only

Handling

Format: Liquid

Concentration: 1 mg/mL

Buffer: PBS with 0.02 % sodium azide and 50 % glycerol pH 7.4.

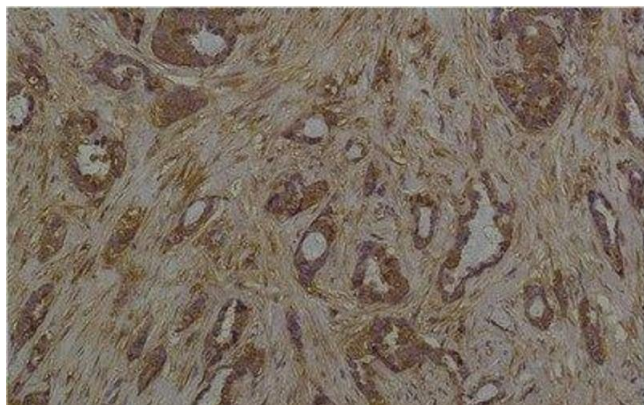
Preservative: Sodium azide

Precaution of Use: This product contains Sodium azide: a POISONOUS AND HAZARDOUS SUBSTANCE which should be handled by trained staff only.

Storage: -20 °C

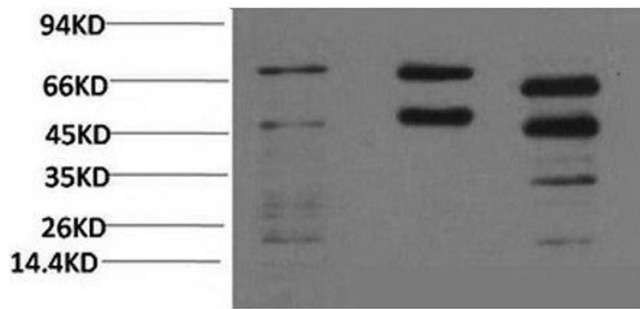
Storage Comment: Store at -20°C. Avoid freeze / thaw cycles.

Images



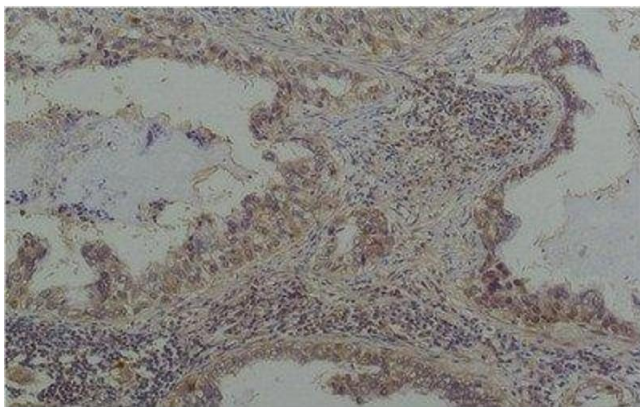
Immunohistochemistry (Paraffin-embedded Sections)

Image 1. Immunohistochemistry of paraffin-embedded Human breast carcinoma tissue with Phosphoserine Monoclonal Antibody at dilution of 1:200



Western Blotting

Image 2. Western Blot analysis of 1) HeLa, 2) Rat brain, 3) Mouse brain with Phosphoserine Monoclonal Antibody at dilution of 1:2000



Immunohistochemistry (Paraffin-embedded Sections)

Image 3. Immunohistochemistry of paraffin-embedded Human lung carcinoma tissue with Phosphoserine Monoclonal Antibody at dilution of 1:200