

Datasheet for ABIN7250980
anti-ERK1/2 antibody (pTyr205, pTyr222)



[Go to Product page](#)

2 Images

Overview

Quantity:	200 µL
Target:	ERK1/2 (MAPK1/3)
Binding Specificity:	pTyr205, pTyr222
Reactivity:	Human, Mouse, Rat
Host:	Mouse
Clonality:	Monoclonal
Conjugate:	This ERK1/2 antibody is un-conjugated
Application:	Immunohistochemistry (Paraffin-embedded Sections) (IHC (p))

Product Details

Immunogen:	Synthetic Peptide of Phospho-ERK 1/2 (Tyr222/205)
Clone:	4D4
Isotype:	IgG
Characteristics:	Phosphorylated antibody
Purification:	Protein A purification

Target Details

Target:	ERK1/2 (MAPK1/3)
Alternative Name:	ERK 1/2 (MAPK1/3 Products)
Background:	Involved in both the initiation and regulation of meiosis, mitosis, and postmitotic functions in

Target Details

differentiated cells by phosphorylating a number of transcription factors such as ELK1. Phosphorylates EIF4EBP1, required for initiation of translation. Phosphorylates microtubule-associated protein 2 (MAP2). Phosphorylates SPZ1 (By similarity). Phosphorylates heat shock factor protein 4 (HSF4) and ARHGEF2. Acts as a transcriptional repressor. Binds to a [GC]AAA[GC] consensus sequence. Repress the expression of interferon gamma-induced genes. Seems to bind to the promoter of CCL5, DMP1, IFIH1, IFITM1, IRF7, IRF9, LAMP3, OAS1, OAS2, OAS3 and STAT1. Transcriptional activity is independent of kinase activity.

UniProt: [P27361](#), [P28482](#)

Application Details

Application Notes: IHC 1:100-200

Restrictions: For Research Use only

Handling

Format: Liquid

Concentration: 1 mg/mL

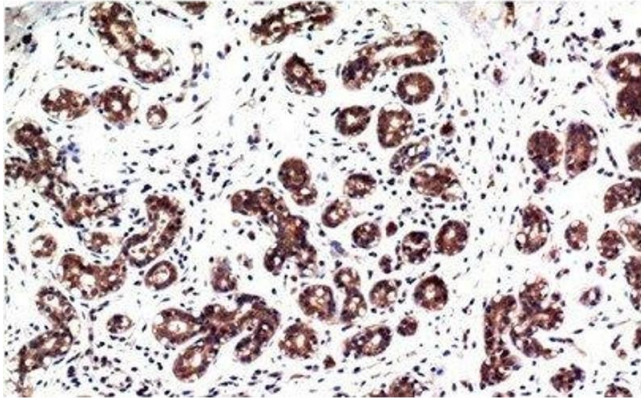
Buffer: PBS with 0.02 % sodium azide, 0.5 % BSA and 50 % glycerol, pH 7.4

Preservative: Sodium azide

Precaution of Use: This product contains Sodium azide: a POISONOUS AND HAZARDOUS SUBSTANCE which should be handled by trained staff only.

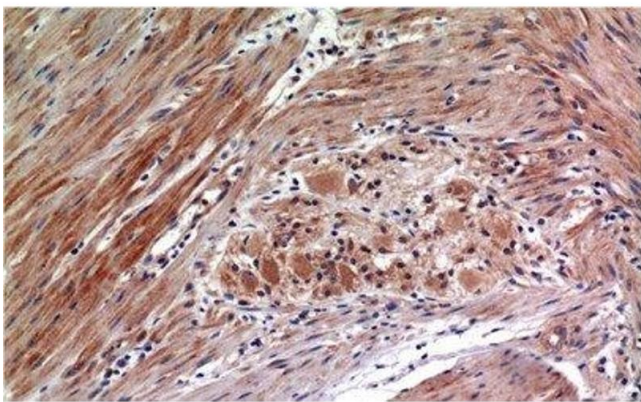
Storage: -20 °C

Storage Comment: Store at -20°C. Avoid freeze / thaw cycles.



Immunohistochemistry (Paraffin-embedded Sections)

Image 1. Immunohistochemistry of paraffin-embedded Human breast carcinoma tissue with Phospho-ERK 1/2 (Tyr222/205) Monoclonal Antibody at dilution of 1:200



Immunohistochemistry (Paraffin-embedded Sections)

Image 2. Immunohistochemistry of paraffin-embedded Human colon carcinoma tissue with Phospho-ERK 1/2 (Tyr222/205) Monoclonal Antibody at dilution of 1:200