



[Go to Product page](#)

Datasheet for ABIN7250983
anti-MLKL antibody (pSer358)

2 Images

Overview

Quantity:	200 µL
Target:	MLKL
Binding Specificity:	pSer358
Reactivity:	Human
Host:	Mouse
Clonality:	Monoclonal
Conjugate:	This MLKL antibody is un-conjugated
Application:	Immunohistochemistry (Paraffin-embedded Sections) (IHC (p))

Product Details

Immunogen:	Synthetic Peptide of Phospho-MLKL (Ser358)
Clone:	6E3
Isotype:	IgG
Characteristics:	Phosphorylated antibody
Purification:	Protein A purification

Target Details

Target:	MLKL
Alternative Name:	MLKL (MLKL Products)
Background:	This gene belongs to the protein kinase superfamily. The encoded protein contains a protein

Target Details

kinase-like domain, however, is thought to be inactive because it lacks several residues required for activity. This protein plays a critical role in tumor necrosis factor (TNF)-induced necroptosis, a programmed cell death process, via interaction with receptor-interacting protein 3 (RIP3), which is a key signaling molecule in necroptosis pathway. Inhibitor studies and knockdown of this gene inhibited TNF-induced necrosis. High levels of this protein and RIP3 are associated with inflammatory bowel disease in children. Alternatively spliced transcript variants have been described for this gene. MLKL (Mixed Lineage Kinase Domain Like Pseudokinase) is a Protein Coding gene. Among its related pathways are Apoptosis and Autophagy and CDK-mediated phosphorylation and removal of Cdc6. GO annotations related to this gene include transferase activity, transferring phosphorus-containing groups and protein tyrosine kinase activity.

UniProt: [Q8NB16](#)

Application Details

Application Notes: IHC 1:100-200

Restrictions: For Research Use only

Handling

Format: Liquid

Concentration: 1 mg/mL

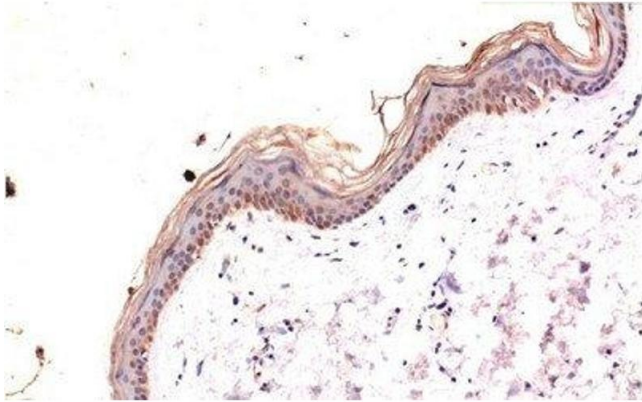
Buffer: PBS with 0.02 % sodium azide, 0.5 % BSA and 50 % glycerol, pH 7.4

Preservative: Sodium azide

Precaution of Use: This product contains Sodium azide: a POISONOUS AND HAZARDOUS SUBSTANCE which should be handled by trained staff only.

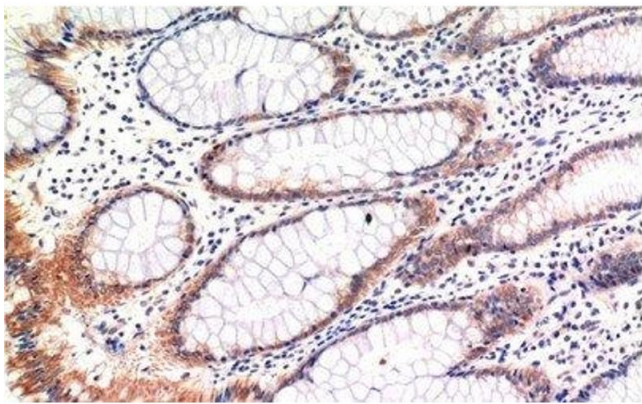
Storage: -20 °C

Storage Comment: Store at -20°C. Avoid freeze / thaw cycles.



Immunohistochemistry (Paraffin-embedded Sections)

Image 1. Immunohistochemistry of paraffin-embedded Human skin tissue with Phospho-MLKL (Ser358) Monoclonal Antibody at dilution of 1:200



Immunohistochemistry (Paraffin-embedded Sections)

Image 2. Immunohistochemistry of paraffin-embedded Human colon carcinoma tissue with Phospho-MLKL (Ser358) Monoclonal Antibody at dilution of 1:200