

Datasheet for ABIN7251016  
**anti-Caspase 8 antibody (Cleaved-Asp384)**



[Go to Product page](#)

3 Images

## Overview

Quantity:	200 µL
Target:	Caspase 8 (CASP8)
Binding Specificity:	Cleaved-Asp384
Reactivity:	Human
Host:	Rabbit
Clonality:	Polyclonal
Conjugate:	This Caspase 8 antibody is un-conjugated
Application:	Western Blotting (WB), ELISA, Immunohistochemistry (Paraffin-embedded Sections) (IHC (p)), Immunofluorescence (IF)

## Product Details

Immunogen:	Synthesized peptide derived from the C-terminal region of human Caspase-8
Isotype:	IgG
Characteristics:	Polyclonal Antibody
Purification:	Affinity purification

## Target Details

Target:	Caspase 8 (CASP8)
Alternative Name:	CASP8 ( <a href="#">CASP8 Products</a> )
Background:	Most upstream protease of the activation cascade of caspases responsible for the

## Target Details

---

TNFRSF6/FAS mediated and TNFRSF1A induced cell death. Binding to the adapter molecule FADD recruits it to either receptor. The resulting aggregate called death-inducing signaling complex (DISC) performs CASP8 proteolytic activation. The active dimeric enzyme is then liberated from the DISC and free to activate downstream apoptotic proteases. Proteolytic fragments of the N-terminal propeptide (termed CAP3, CAP5 and CAP6) are likely retained in the DISC. Cleaves and activates CASP3, CASP4, CASP6, CASP7, CASP9 and CASP10. May participate in the GZMB apoptotic pathways. Cleaves ADPRT. Hydrolyzes the small-molecule substrate, Ac-Asp-Glu-Val-Asp-AMC. Likely target for the cowpox virus CRMA death inhibitory protein. Isoform 5, isoform 6, isoform 7 and isoform 8 lack the catalytic site and may interfere with the pro-apoptotic activity of the complex.

Molecular Weight: Observed\_MW: 47+55 kDa  
Calculated\_MW: 55 kDa

UniProt: [Q14790](#)

Pathways: [Apoptosis](#), [Caspase Cascade in Apoptosis](#), [TLR Signaling](#), [Activation of Innate immune Response](#), [Tube Formation](#), [Positive Regulation of Endopeptidase Activity](#), [Toll-Like Receptors Cascades](#)

## Application Details

---

Application Notes: WB 1:500-2000, IHC 1:50-300, IF 1:50-300

Restrictions: For Research Use only

## Handling

---

Format: Liquid

Concentration: 1 mg/mL

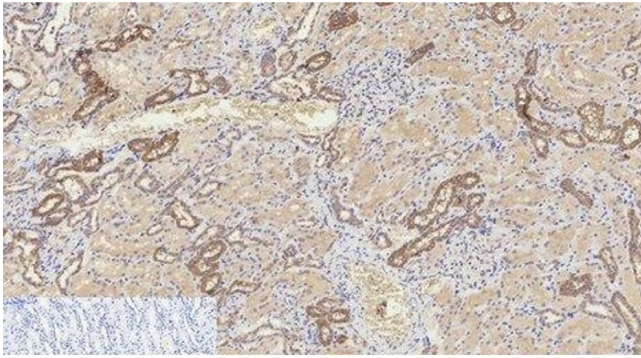
Buffer: PBS with 0.02 % sodium azide, 0.5 % BSA and 50 % glycerol, pH 7.4

Preservative: Sodium azide

Precaution of Use: This product contains Sodium azide: a POISONOUS AND HAZARDOUS SUBSTANCE which should be handled by trained staff only.

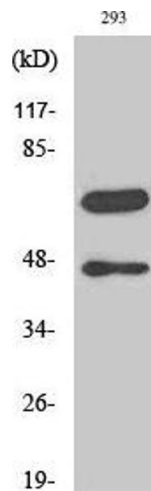
Storage: -20 °C

Storage Comment: Store at -20°C. Avoid freeze / thaw cycles.



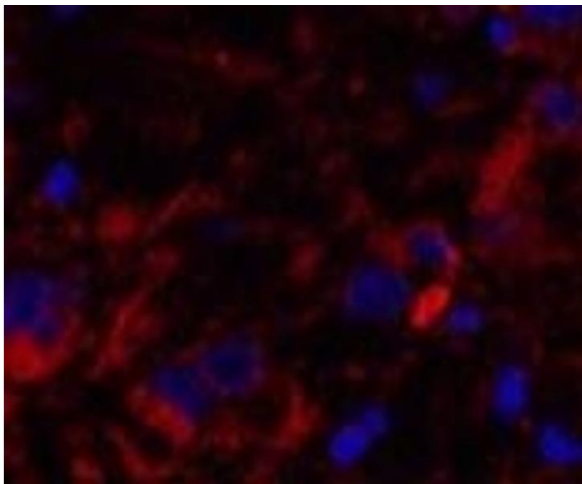
### Immunohistochemistry (Paraffin-embedded Sections)

**Image 1.** Immunohistochemistry of paraffin-embedded Human kidney tissue using Cleaved-CASP8 (D384) Polyclonal Antibody at dilution of 1:200.



### Western Blotting

**Image 2.** Western Blot analysis of 293 cells with Cleaved-CASP8 (D384) Polyclonal Antibody



### Immunofluorescence

**Image 3.** Immunofluorescence analysis of Human breast cancer tissue using Cleaved-CASP8 (D384) Polyclonal Antibody at dilution of 1:200.