



Datasheet for ABIN7251022

anti-PARP1 antibody (Cleaved-Asp214)



[Go to Product page](#)

3 Images

Overview

Quantity:	200 µL
Target:	PARP1
Binding Specificity:	Cleaved-Asp214
Reactivity:	Human, Mouse
Host:	Rabbit
Clonality:	Polyclonal
Conjugate:	This PARP1 antibody is un-conjugated
Application:	Western Blotting (WB), ELISA, Immunofluorescence (IF), Immunohistochemistry (Paraffin-embedded Sections) (IHC (p))

Product Details

Immunogen:	Synthesized peptide derived from the Internal region of human PARP-1
Isotype:	IgG
Characteristics:	Polyclonal Antibody
Purification:	Affinity purification

Target Details

Target:	PARP1
Alternative Name:	PARP1 (PARP1 Products)
Background:	This gene encodes a chromatin-associated enzyme, poly(ADP-ribosyl)transferase, which

Target Details

modifies various nuclear proteins by poly(ADP-ribosyl)ation. The modification is dependent on DNA and is involved in the regulation of various important cellular processes such as differentiation, proliferation, and tumor transformation and also in the regulation of the molecular events involved in the recovery of cell from DNA damage. In addition, this enzyme may be the site of mutation in Fanconi anemia, and may participate in the pathophysiology of type I diabetes.

Molecular Weight: Observed_MW: 24 kDa
Calculated_MW: 113 kDa

UniProt: [P09874](#)

Pathways: [Apoptosis](#), [Caspase Cascade in Apoptosis](#), [DNA Damage Repair](#), [Production of Molecular Mediator of Immune Response](#), [Maintenance of Protein Location](#)

Application Details

Application Notes: WB 1:500-2000, IHC 1:50-300, IF 1:50-300

Restrictions: For Research Use only

Handling

Format: Liquid

Concentration: 1 mg/mL

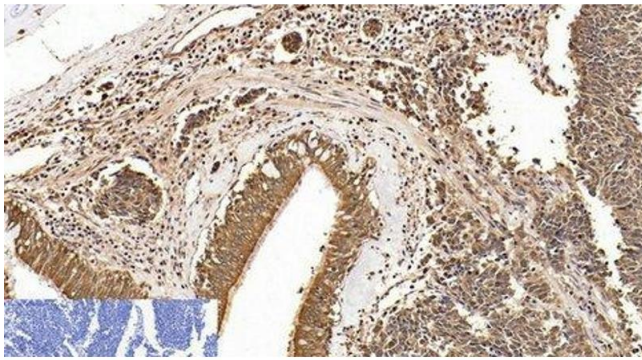
Buffer: PBS with 0.02 % sodium azide, 0.5 % BSA and 50 % glycerol, pH 7.4

Preservative: Sodium azide

Precaution of Use: This product contains Sodium azide: a POISONOUS AND HAZARDOUS SUBSTANCE which should be handled by trained staff only.

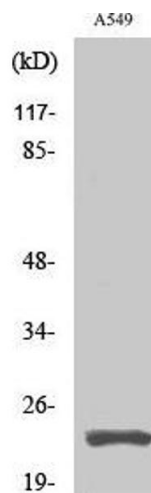
Storage: -20 °C

Storage Comment: Store at -20°C. Avoid freeze / thaw cycles.



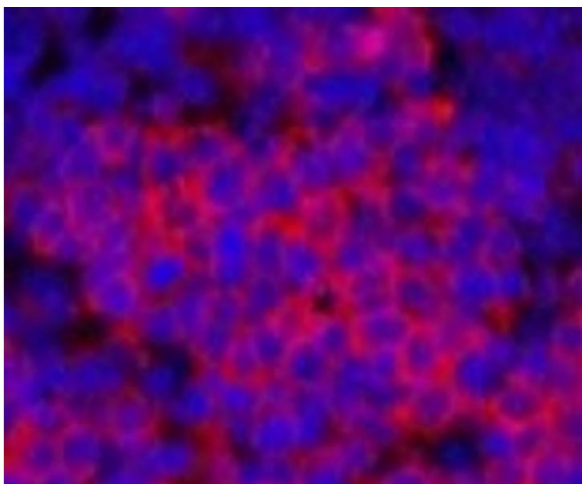
Immunohistochemistry (Paraffin-embedded Sections)

Image 1. Immunohistochemistry of paraffin-embedded Human lung cancer tissue using Cleaved-PARP1 (D214) Polyclonal Antibody at dilution of 1:200.



Western Blotting

Image 2. Western Blot analysis of A549 cells using Cleaved-PARP1 (D214) Polyclonal Antibody at dilution of 1:2000.



Immunofluorescence

Image 3. Immunofluorescence analysis of Rat spleen tissue using Cleaved-PARP1 (D214) Polyclonal Antibody at dilution of 1:200.