

Datasheet for ABIN7251046

anti-PYCARD antibody[Go to Product page](#)**2** Images

Overview

Quantity:	200 µL
Target:	PYCARD
Reactivity:	Human, Mouse, Rat
Host:	Rabbit
Clonality:	Polyclonal
Conjugate:	This PYCARD antibody is un-conjugated
Application:	Western Blotting (WB), ELISA, Immunofluorescence (IF), Immunohistochemistry (Paraffin-embedded Sections) (IHC (p))

Product Details

Immunogen:	Synthesized peptide derived from the N-terminal region of human ASC
Isotype:	IgG
Characteristics:	Polyclonal Antibody
Purification:	Affinity purification

Target Details

Target:	PYCARD
Alternative Name:	PYCARD (PYCARD Products)
Background:	Promotes caspase-mediated apoptosis. This proapoptotic activity is mediated predominantly through the activation of caspase-9. May be a component of the inflammasome, a protein complex which also includes NALP2, CARD8 and CASP1 and whose function would be the

Target Details

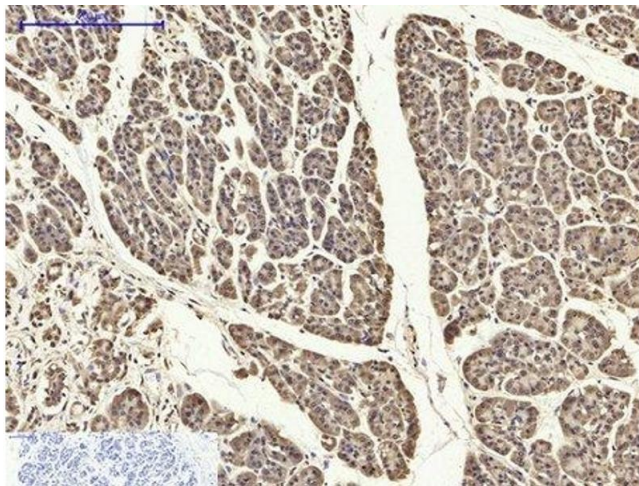
	activation of proinflammatory caspases.
Molecular Weight:	Observed_MW: 21 kDa Calculated_MW: 22 kDa
UniProt:	Q9ULZ3
Pathways:	Activation of Innate immune Response , Cellular Response to Molecule of Bacterial Origin , Regulation of Actin Filament Polymerization , Positive Regulation of Endopeptidase Activity , Activated T Cell Proliferation , Inflammasome

Application Details

Application Notes:	WB 1:500-1:2000, IHC 1:100-1:300, IF 1:200-1:1000, ELISA 1:40000
Restrictions:	For Research Use only

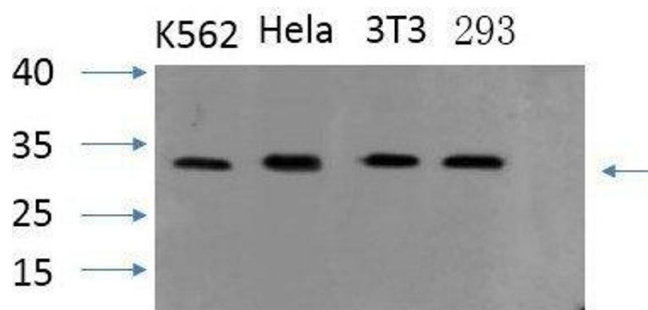
Handling

Format:	Liquid
Concentration:	1 mg/mL
Buffer:	PBS with 0.02 % sodium azide, 0.5 % BSA and 50 % glycerol, pH 7.4
Preservative:	Sodium azide
Precaution of Use:	This product contains Sodium azide: a POISONOUS AND HAZARDOUS SUBSTANCE which should be handled by trained staff only.
Storage:	-20 °C
Storage Comment:	Store at -20°C. Avoid freeze / thaw cycles.



Immunohistochemistry (Paraffin-embedded Sections)

Image 1. Immunohistochemistry of paraffin-embedded Human stomach cancer tissue using PYCARD Polyclonal Antibody at dilution of 1:200.



Western Blotting

Image 2. Western Blot analysis of various cells using PYCARD Polyclonal Antibody at dilution of 1:1000.