

Datasheet for ABIN7251067
anti-Caveolin-1 antibody

3 Images

[Go to Product page](#)

Overview

Quantity:	200 µL
Target:	Caveolin-1 (CAV1)
Reactivity:	Human, Rat, Mouse
Host:	Rabbit
Clonality:	Polyclonal
Conjugate:	This Caveolin-1 antibody is un-conjugated
Application:	Western Blotting (WB), ELISA, Immunofluorescence (IF), Immunohistochemistry (Paraffin-embedded Sections) (IHC (p))

Product Details

Immunogen:	Synthesized peptide derived from the C-terminal region of human Caveolin-1
Isotype:	IgG
Characteristics:	Polyclonal Antibody
Purification:	Affinity purification

Target Details

Target:	Caveolin-1 (CAV1)
Alternative Name:	CAV1 (CAV1 Products)
Background:	May act as a scaffolding protein within caveolar membranes. Interacts directly with G-protein alpha subunits and can functionally regulate their activity (By similarity). Involved in the costimulatory signal essential for T-cell receptor (TCR)-mediated T-cell activation. Its binding to

Target Details

DPP4 induces T-cell proliferation and NF-kappa-B activation in a T-cell receptor/CD3-dependent manner. Recruits CTNNB1 to caveolar membranes and may regulate CTNNB1-mediated signaling through the Wnt pathway.

Molecular Weight: Observed_MW: 25 kDa
Calculated_MW: 20 kDa

UniProt: [Q03135](#)

Pathways: [Maintenance of Protein Location](#), [Signaling Events mediated by VEGFR1 and VEGFR2](#), [Negative Regulation of Transporter Activity](#), [VEGFR1 Specific Signals](#)

Application Details

Application Notes: WB 1:500-2000, IHC 1:50-300, IF 1:50-300

Restrictions: For Research Use only

Handling

Format: Liquid

Concentration: 1 mg/mL

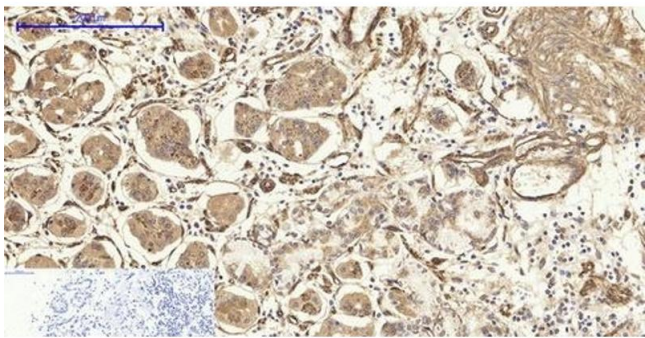
Buffer: PBS with 0.02 % sodium azide, 0.5 % BSA and 50 % glycerol, pH 7.4

Preservative: Sodium azide

Precaution of Use: This product contains Sodium azide: a POISONOUS AND HAZARDOUS SUBSTANCE which should be handled by trained staff only.

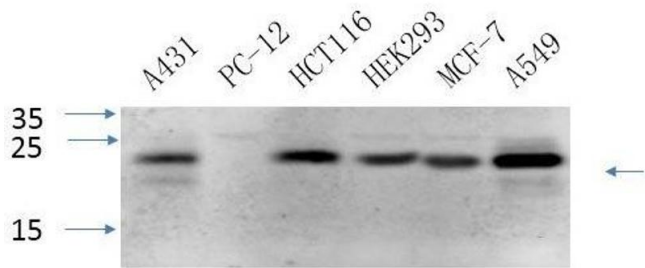
Storage: -20 °C

Storage Comment: Store at -20°C. Avoid freeze / thaw cycles.



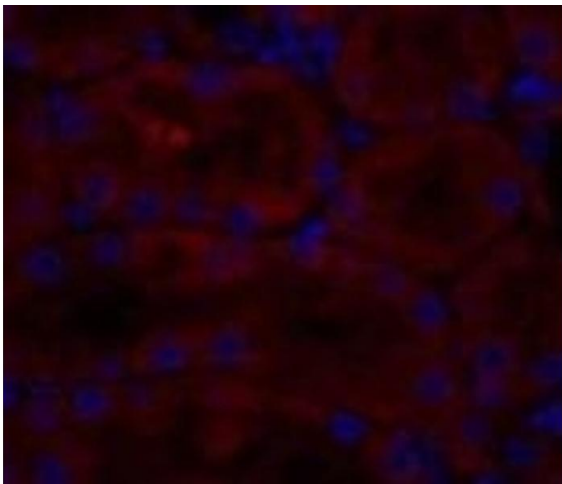
Immunohistochemistry (Paraffin-embedded Sections)

Image 1. Immunohistochemistry of paraffin-embedded Human stomach tissue using CAV1 Polyclonal Antibody at dilution of 1:200.



Western Blotting

Image 2. Western Blot analysis of various cells using CAV1 Polyclonal Antibody at dilution of 1:1000.



Immunofluorescence

Image 3. Immunofluorescence analysis of Rat kidney tissue using CAV1 Polyclonal Antibody at dilution of 1:200.