

Datasheet for ABIN7251142

anti-GLUT1 antibody

3 Images

[Go to Product page](#)

Overview

Quantity:	200 µL
Target:	GLUT1 (SLC2A1)
Reactivity:	Human, Mouse, Rat
Host:	Rabbit
Clonality:	Polyclonal
Conjugate:	This GLUT1 antibody is un-conjugated
Application:	Western Blotting (WB), ELISA, Immunofluorescence (IF), Immunohistochemistry (Paraffin-embedded Sections) (IHC (p))

Product Details

Immunogen:	Synthesized peptide derived from the C-terminal region of human Glut1
Isotype:	IgG
Characteristics:	Polyclonal Antibody
Purification:	Affinity purification

Target Details

Target:	GLUT1 (SLC2A1)
Alternative Name:	GLUT-1 (SLC2A1 Products)
Background:	This gene encodes a major glucose transporter in the mammalian blood-brain barrier. Mutations in this gene have been found in a family with paroxysmal exertion-induced dyskinesia. Facilitative glucose transporter. This isoform may be responsible for constitutive or

Target Details

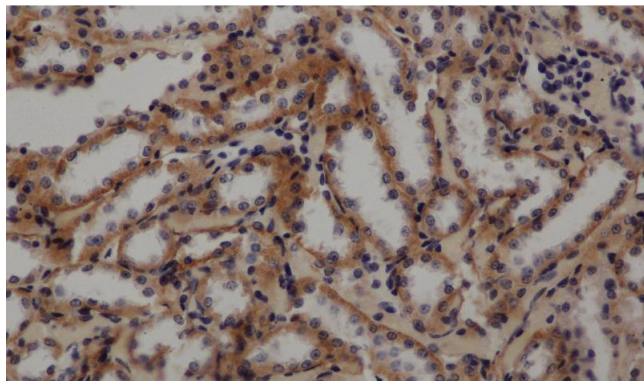
	basal glucose uptake. Has a very broad substrate specificity, can transport a wide range of aldoses including both pentoses and hexoses.
Molecular Weight:	Observed_MW: 55 kDa Calculated_MW: 54 kDa
UniProt:	P11166
Pathways:	Sensory Perception of Sound , Dicarboxylic Acid Transport , Warburg Effect

Application Details

Application Notes:	WB 1:500-1:2000, IHC 1:100-1:300, IF 1:50-1:200, ELISA 1:40000
Restrictions:	For Research Use only

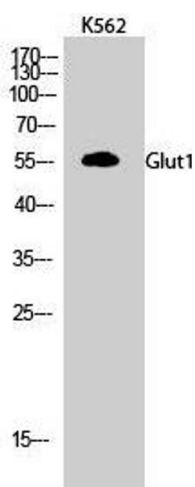
Handling

Format:	Liquid
Concentration:	1 mg/mL
Buffer:	PBS with 0.02 % sodium azide, 0.5 % BSA and 50 % glycerol, pH 7.4
Preservative:	Sodium azide
Precaution of Use:	This product contains Sodium azide: a POISONOUS AND HAZARDOUS SUBSTANCE which should be handled by trained staff only.
Storage:	-20 °C
Storage Comment:	Store at -20°C. Avoid freeze / thaw cycles.



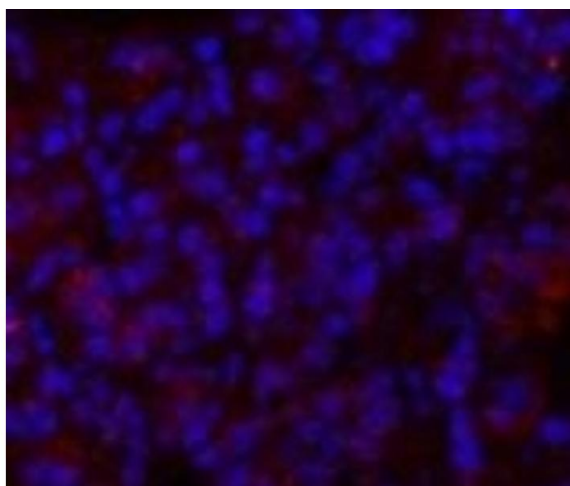
Immunohistochemistry (Paraffin-embedded Sections)

Image 1. Immunohistochemistry of paraffin-embedded Rat kidney using GLUT-1 Polyclonal Antibody at dilution of 1:50



Western Blotting

Image 2. Western Blot analysis of K562 cells using GLUT-1 Polyclonal Antibody at dilution of 1:500.



Immunofluorescence

Image 3. Immunofluorescence analysis of Rat lung tissue using GLUT-1 Polyclonal Antibody at dilution of 1:200.