

Datasheet for ABIN7251187

anti-JAK3 antibody**3** Images[Go to Product page](#)

Overview

Quantity:	200 µL
Target:	JAK3
Reactivity:	Human, Mouse, Rat
Host:	Rabbit
Clonality:	Polyclonal
Conjugate:	This JAK3 antibody is un-conjugated
Application:	Western Blotting (WB), ELISA, Immunofluorescence (IF), Immunohistochemistry (Paraffin-embedded Sections) (IHC (p))

Product Details

Immunogen:	Synthesized peptide derived from human JAK3 around the non-phosphorylation site of Tyr785.
Isotype:	IgG
Characteristics:	Polyclonal Antibody
Purification:	Affinity purification

Target Details

Target:	JAK3
Alternative Name:	JAK3 (JAK3 Products)
Background:	The protein encoded by this gene is a member of the Janus kinase (JAK) family of tyrosine kinases involved in cytokine receptor-mediated intracellular signal transduction. It is predominantly expressed in immune cells and transduces a signal in response to its activation

Target Details

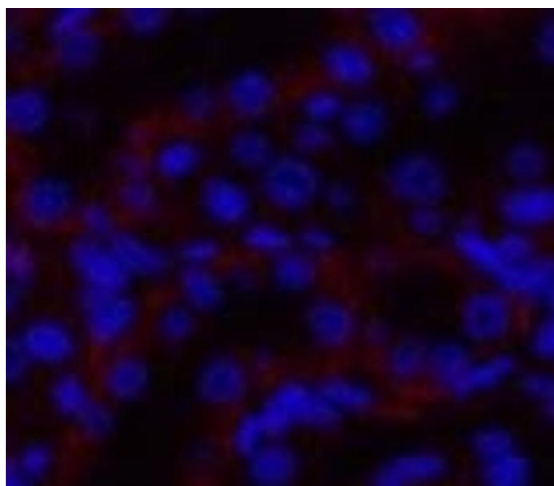
	via tyrosine phosphorylation by interleukin receptors. Mutations in this gene are associated with autosomal SCID (severe combined immunodeficiency disease).
Molecular Weight:	Observed_MW: 125 kDa Calculated_MW: 125 kDa
UniProt:	P52333
Pathways:	JAK-STAT Signaling , RTK Signaling , Response to Growth Hormone Stimulus , Regulation of Leukocyte Mediated Immunity , Production of Molecular Mediator of Immune Response , Protein targeting to Nucleus , Activated T Cell Proliferation , Unfolded Protein Response

Application Details

Application Notes:	WB 1:500-1:2000, IHC 1:100-1:300, IF 1:200-1:1000, ELISA 1:20000
Restrictions:	For Research Use only

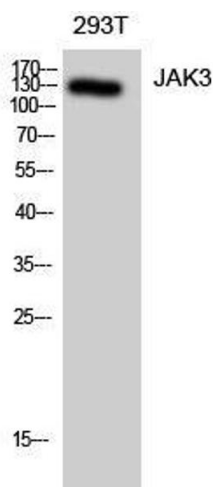
Handling

Format:	Liquid
Concentration:	1 mg/mL
Buffer:	PBS with 0.02 % sodium azide, 0.5 % BSA and 50 % glycerol, pH 7.4
Preservative:	Sodium azide
Precaution of Use:	This product contains Sodium azide: a POISONOUS AND HAZARDOUS SUBSTANCE which should be handled by trained staff only.
Storage:	-20 °C
Storage Comment:	Store at -20°C. Avoid freeze / thaw cycles.



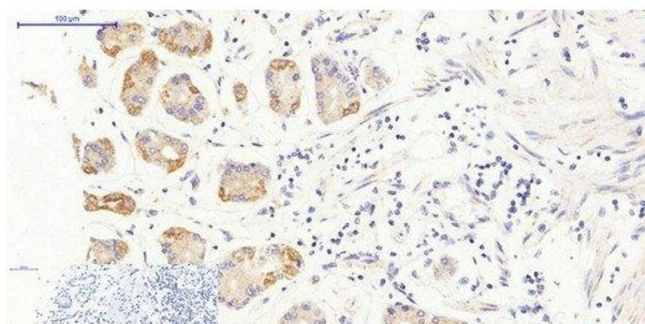
Immunofluorescence

Image 1. Immunofluorescence analysis of Rat kidney tissue using JAK3 Polyclonal Antibody at dilution of 1:200.



Western Blotting

Image 2. Western Blot analysis of 293T cells using JAK3 Polyclonal Antibody at dilution of 1:1000.



Immunohistochemistry (Paraffin-embedded Sections)

Image 3. Immunohistochemistry of paraffin-embedded Human stomach tissue using JAK3 Polyclonal Antibody at dilution of 1:200.