

## Datasheet for ABIN7251211 **anti-MMP2 antibody**

### 3 Images



[Go to Product page](#)

### Overview

Quantity:	200 µL
Target:	MMP2
Reactivity:	Human, Rat, Mouse, Monkey
Host:	Rabbit
Clonality:	Polyclonal
Conjugate:	This MMP2 antibody is un-conjugated
Application:	Western Blotting (WB), ELISA, Immunofluorescence (IF), Immunohistochemistry (Paraffin-embedded Sections) (IHC (p))

### Product Details

Immunogen:	Synthesized peptide derived from the C-terminal region of human MMP-2
Isotype:	IgG
Characteristics:	Polyclonal Antibody
Purification:	Affinity purification

### Target Details

Target:	MMP2
Alternative Name:	MMP2 ( <a href="#">MMP2 Products</a> )
Background:	Ubiquitous metalloproteinase that is involved in diverse functions such as remodeling of the vasculature, angiogenesis, tissue repair, tumor invasion, inflammation, and atherosclerotic plaque rupture. As well as degrading extracellular matrix proteins, can also act on several

## Target Details

---

nonmatrix proteins such as big endothelial 1 and beta-type CGRP promoting vasoconstriction. Also cleaves KISS at a Gly-Leu bond. Appears to have a role in myocardial cell death pathways. Contributes to myocardial oxidative stress by regulating the activity of GSK3beta. Cleaves GSK3beta in vitro. PEX, the C-terminal non-catalytic fragment of MMP2, possesses anti-angiogenic and anti-tumor properties and inhibits cell migration and cell adhesion to FGF2 and vitronectin. Ligand for integrin $\alpha$ v/ $\beta$ 3 on the surface of blood vessels.

---

Molecular Weight:	Observed_MW: 74 kDa Calculated_MW: 74 kDa
-------------------	--

---

UniProt:	<a href="#">P08253</a>
----------	------------------------

---

Pathways:	<a href="#">Activation of Innate immune Response</a>
-----------	--

---

## Application Details

---

Application Notes:	WB 1:500-1:2000, IHC 1:100-1:300, IF 1:200-1:1000, ELISA 1:20000
--------------------	--

---

Restrictions:	For Research Use only
---------------	-----------------------

---

## Handling

---

Format:	Liquid
---------	--------

---

Concentration:	1 mg/mL
----------------	---------

---

Buffer:	PBS with 0.02 % sodium azide, 0.5 % BSA and 50 % glycerol, pH 7.4
---------	---

---

Preservative:	Sodium azide
---------------	--------------

---

Precaution of Use:	This product contains Sodium azide: a POISONOUS AND HAZARDOUS SUBSTANCE which should be handled by trained staff only.
--------------------	--

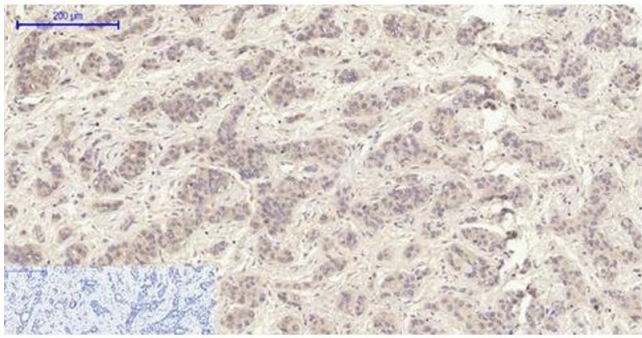
---

Storage:	-20 °C
----------	--------

---

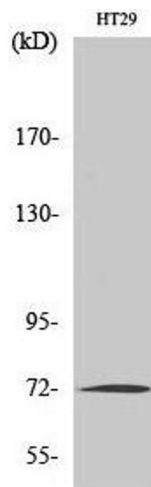
Storage Comment:	Store at -20°C. Avoid freeze / thaw cycles.
------------------	---

---



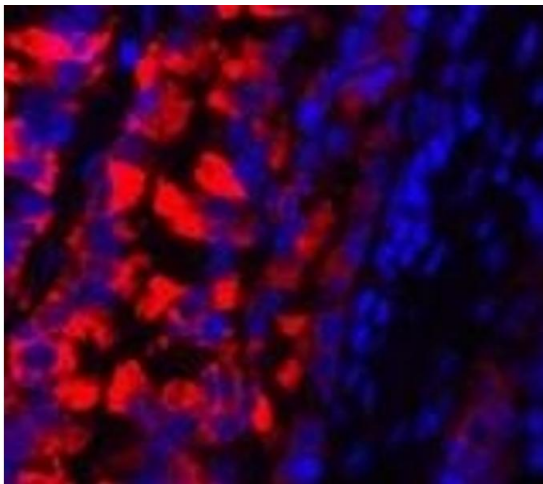
### Immunohistochemistry (Paraffin-embedded Sections)

**Image 1.** Immunohistochemistry of paraffin-embedded Human liver cancer tissue using MMP2 Polyclonal Antibody at dilution of 1:200.



### Western Blotting

**Image 2.** Western Blot analysis of HT-29 cells using MMP2 Polyclonal Antibody at dilution of 1:1000.



### Immunofluorescence

**Image 3.** Immunofluorescence analysis of Rat lung tissue using MMP2 Polyclonal Antibody at dilution of 1:200.