

Datasheet for ABIN7251313

anti-Actin antibody**2** Images[Go to Product page](#)

Overview

Quantity:	200 µL
Target:	Actin
Reactivity:	Human, Rat, Mouse
Host:	Rabbit
Clonality:	Polyclonal
Conjugate:	This Actin antibody is un-conjugated
Application:	Western Blotting (WB), ELISA, Immunohistochemistry (Paraffin-embedded Sections) (IHC (p))

Product Details

Immunogen:	Synthesized peptide derived from the C-terminal region of human Actin
Isotype:	IgG
Characteristics:	Polyclonal Antibody
Purification:	Affinity purification

Target Details

Target:	Actin
Abstract:	Actin Products
Background:	Actins are highly conserved proteins that are involved in various types of cell motility and are ubiquitously expressed in all eukaryotic cells.
Molecular Weight:	Observed_MW: 45 kDa

Target Details

Calculated_MW: 42 kDa

UniProt: [P60709](#), [Q9BYX7](#), [P63261](#)

Application Details

Application Notes: WB 1:500-1:2000, IHC 1:100-1:300, ELISA 1:10000

Restrictions: For Research Use only

Handling

Format: Liquid

Concentration: 1 mg/mL

Buffer: PBS with 0.02 % sodium azide, 0.5 % BSA and 50 % glycerol, pH 7.4

Preservative: Sodium azide

Precaution of Use: This product contains Sodium azide: a POISONOUS AND HAZARDOUS SUBSTANCE which should be handled by trained staff only.

Storage: -20 °C

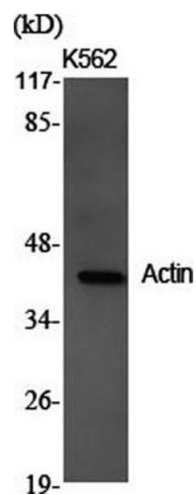
Storage Comment: Store at -20°C. Avoid freeze / thaw cycles.

Images



Western Blotting

Image 1. Western Blot analysis of HeLa cells using Actin Polyclonal Antibody at dilution of 1:2000.



Western Blotting

Image 2. Western Blot analysis of K562 cells using Actin Polyclonal Antibody at dilution of 1:2000.