

Datasheet for ABIN7251325
anti-Claudin 4 antibody[Go to Product page](#)

1 Image

Overview

Quantity:	200 µL
Target:	Claudin 4 (CLDN4)
Reactivity:	Human, Mouse, Rat
Host:	Rabbit
Clonality:	Polyclonal
Conjugate:	This Claudin 4 antibody is un-conjugated
Application:	Western Blotting (WB), ELISA, Immunohistochemistry (Paraffin-embedded Sections) (IHC (p)), Immunofluorescence (IF)

Product Details

Immunogen:	Synthesized peptide derived from the C-terminal region of human Claudin-4
Isotype:	IgG
Characteristics:	Polyclonal Antibody
Purification:	Affinity purification

Target Details

Target:	Claudin 4 (CLDN4)
Alternative Name:	Claudin 4 (CLDN4 Products)
Background:	Claudin 4, also known as CLDN4, is a protein which in humans is encoded by the CLDN4 gene. It belongs to the group of claudins. This gene encodes an integral membrane protein, which belongs to the claudin family. The protein is a component of tight junction strands and may

Target Details

play a role in internal organ development and function during pre- and postnatal life. This gene is deleted in Williams-Beuren syndrome, a neurodevelopmental disorder affecting multiple systems.

Molecular Weight: Observed_MW: 22 kDa
Calculated_MW: 22 kDa

UniProt: [O14493](#)

Pathways: [Hepatitis C](#)

Application Details

Application Notes: WB 1:500-1:2000, IHC 1:100-1:300, IF 1:200-1:1000, ELISA 1:5000

Restrictions: For Research Use only

Handling

Format: Liquid

Concentration: 1 mg/mL

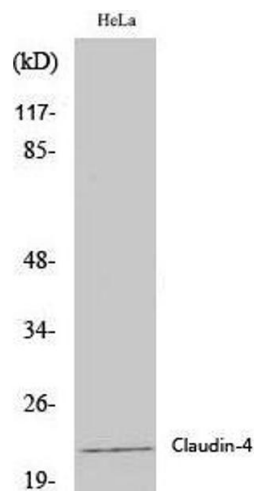
Buffer: PBS with 0.02 % sodium azide, 0.5 % BSA and 50 % glycerol, pH 7.4

Preservative: Sodium azide

Precaution of Use: This product contains Sodium azide: a POISONOUS AND HAZARDOUS SUBSTANCE which should be handled by trained staff only.

Storage: -20 °C

Storage Comment: Store at -20°C. Avoid freeze / thaw cycles.



Western Blotting

Image 1. Western Blot analysis of Hela cells using Claudin 4 Polyclonal Antibody at dilution of 1:2000.